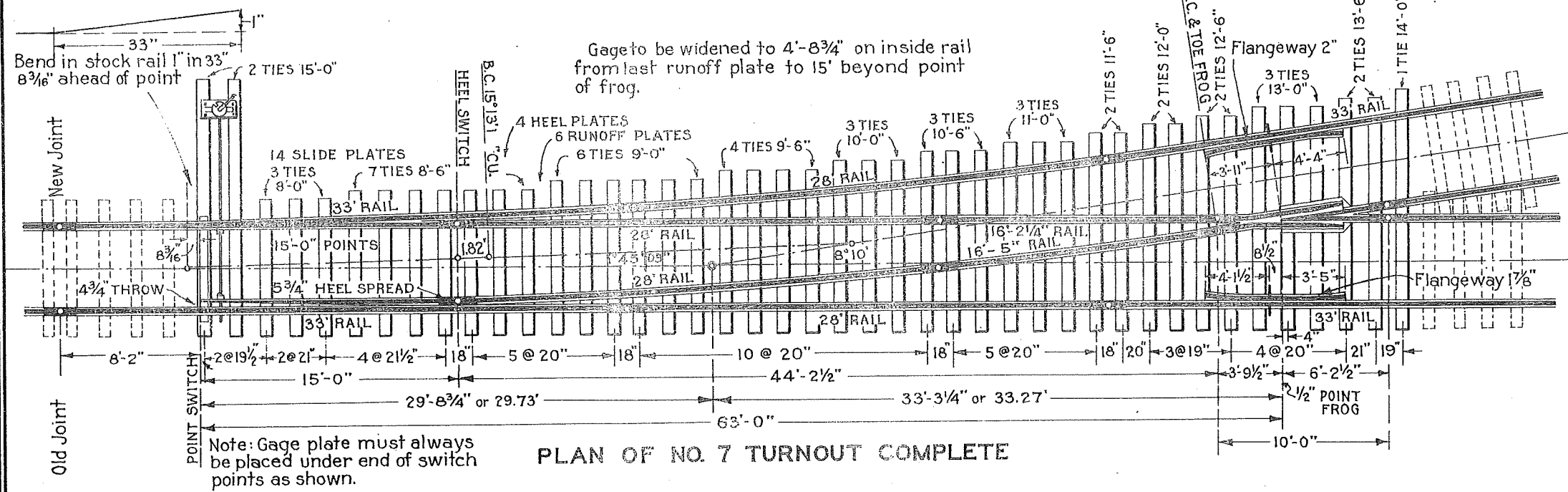


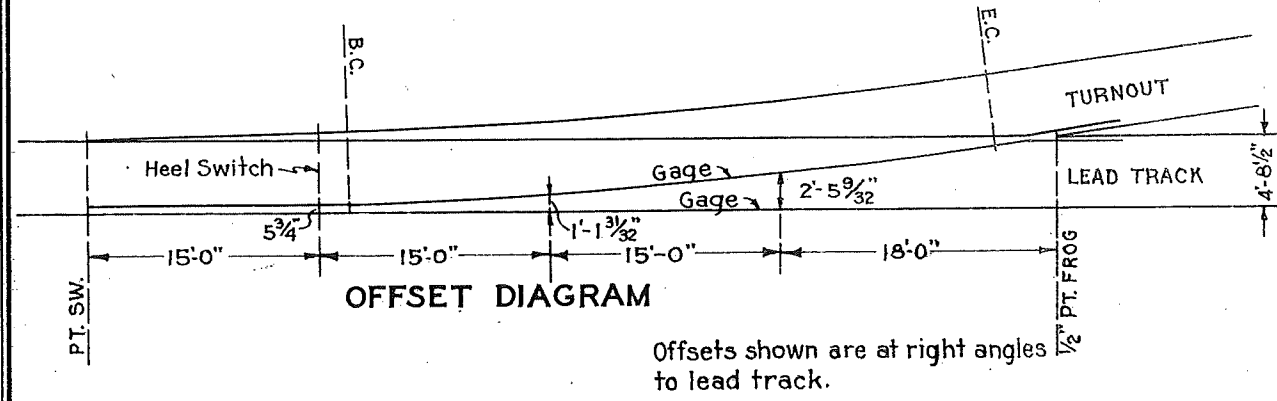
	PIECES 7"x9"														TOTAL NUMBER PIECES	TOTAL FEET B.M.	
	16'-0"	8'-0"	8'-6"	9'-0"	9'-6"	10'-0"	10'-6"	11'-0"	11'-6"	12'-0"	12'-6"	13'-0"	13'-6"	14'-0"			15'-0"
DOUBLE HEADBLOCK	0	3	7	6	4	3	3	3	2	2	2	3	2	1	2	43	2373.0
SINGLE HEADBLOCK	1	4	7	6	4	3	3	3	2	2	2	3	2	1	0	43	2401.5

When single headblock is used place the 9"x12"x16'-0" tie under end of switch points.

FROG ANGLE ..... 8° 10'  
 DEGREE OF TURNOUT CURVE ..... 15° 13' 12"  
 LEAD ..... 63'-0"  
 CLOSURE RAILS ..... 2-28, 1-16'-2 1/4", 1-16'-5"  
 Other lengths may be used for closure rails but minimum length must not be less than 15 feet.



PLAN OF NO. 7 TURNOUT COMPLETE



OFFSET DIAGRAM

APPROVED: *J. M. Williams*  
 CHIEF ENGINEER  
 APPROVED: *E. W. Mason*  
 VICE PRESIDENT AND GENERAL MANAGER

THE WESTERN PACIFIC RAILROAD CO.  
 STANDARD  
 NO. 7 TURNOUT COMPLETE  
 FOR USE WITH 85 LB., 33' RAIL-15'-0" POINTS  
 Scale: 1/8" = 1'-0"      Adopted Feb. 1, 1937