

BUILDER'S LOT NO. 1476

CHASSIS

AFE 110-69

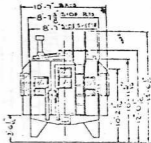
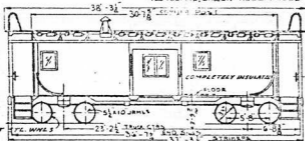
CAR NO. 261-265
ORIG NO OF CARS - 5

EQUIPPED WITH:

- 2-100 LB. PROPANE CYLINDERS
- CABAN MODEL VCN-10 PROPANE HEATER
- MINK #29 PROPANE HOT PLATE
- NORCOLD #644GB PROPANE REFRIGERATOR

BUILT BY INTERNATIONAL RAILWAY CAR CO OCT. 1969

- LEEDS & YIELD # 2052-AA ALTERNATOR
- # 3284-BA REGULATOR
- # 1074-CA RECTIFIER
- 120VOLT AC CIRCUIT RECEPTACLE



1-1/2" WHEEL
76. WHEELS
BRAKES ASD
GARBER-BETTENDORF SWING MOTION TRUCK
MINER CR & Z RUBBER DRAFT GEAR
TIMKEN A ROLLER-BEARINGS

LENGTH INSIDE 30'-0 1/2"
WIDTH 8'-0"
HEIGHT 7'-1 1/2"

30'-0 1/2"
8'-0"
7'-1 1/2"

CAPACITY

110,000 LBS

WEIGHT - BODY

- FRONT
73300 47000