

★ INDICATE LOAD LIMIT MARKED DOWN BY OWNER
SEE A.R.A. RULE 30 PG. 5 SUP. #1 1925 REVISION
CODE OF RULES
STAR TO BE 3" IN SIZE

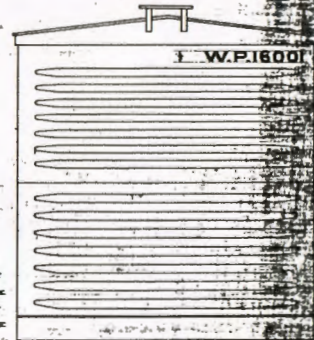
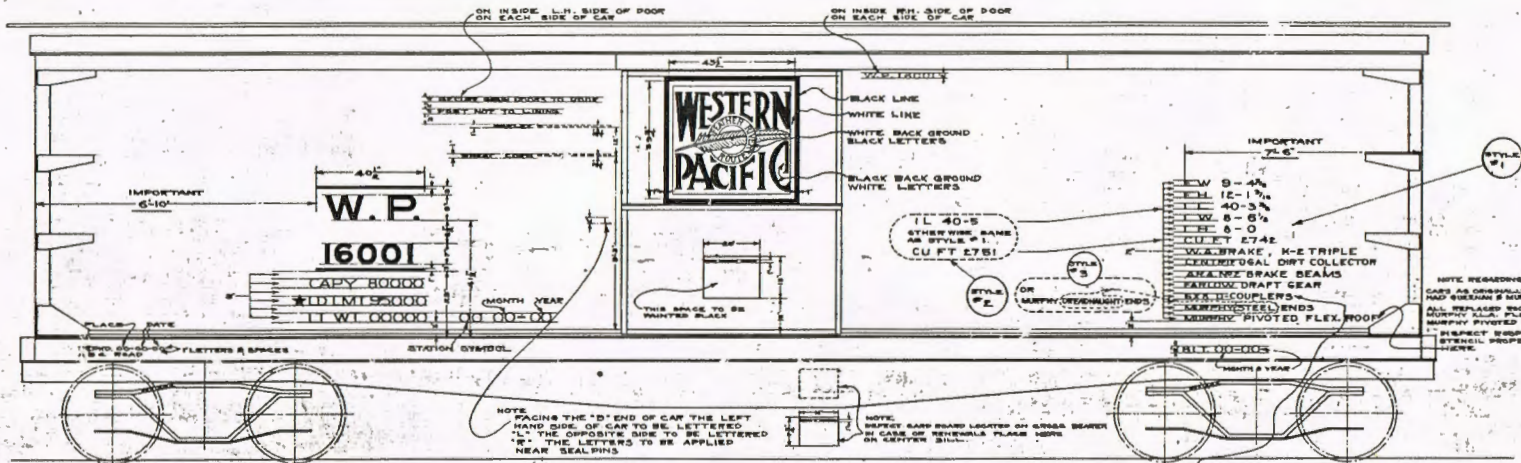
NOTE
STENCILS ON RESERVOIR TO BE IN
ACCORDANCE WITH A.R.A. RULE 50

NOTE

CARS-17354
18666
18672
18671
17772

FROM O.S.R.F. ARE AT
VARIANCE WITH SERIES
1600-18000
VARIANCES AS FOLLOWS
HEIGHT AT EAVES 12'-6"
WIDTH AT EAVES 9'-7 1/2"
DRAFT GEAR NATIONAL

STYLE	RUN	APPROX. DATE	NO. OF CARS
1	1600-18000		
2			
3			



ON ONE SIDE OF EACH SEALPIN (TOWARD OTHER SIDE) IN WHITE LETTERS AND FIGURES

This file (626-F_16001-02.pdf) was posted to
WPLives.org at Thu Jun 11 06:27:44 AM PDT 2026