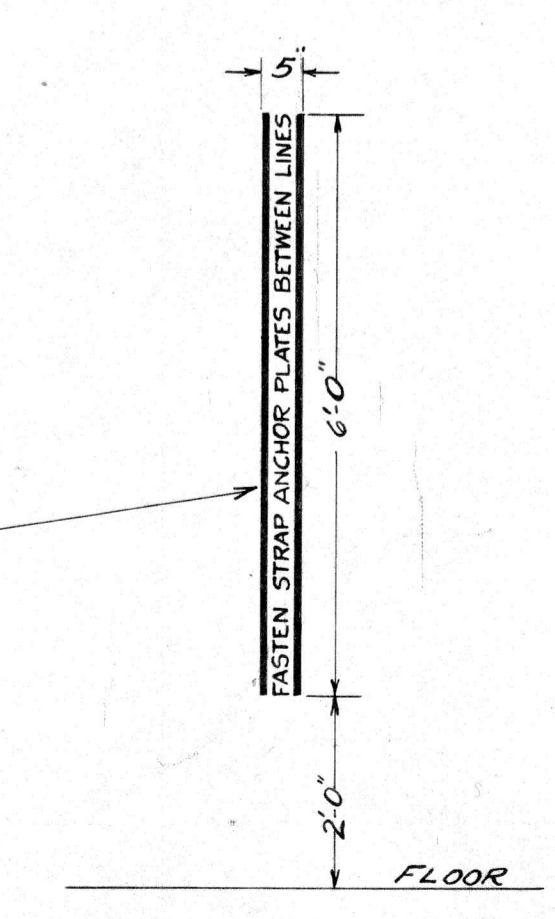


- NOTE 1: ALL LETTERING AND MARKINGS TO BE YELLOW
- NOTE 2: ALL LETTERS AND FIGURES 3 OR OVER IN HEIGHT ARE TO BE SOLID AND NOT DISCONNECTED AT BRIDGES.
- NOTE 3: STENCILS OR POUNCE PATTERNS WILL BE FURNISHED BY OFFICE OF CHIEF MECHANICAL OFFICER AT SACRAMENTO SHOPS UPON REQUEST.
- NOTE 4: ON INSIDE OF CAR OVER EACH WIDE LINING FURRING STRIP (8 LOCATIONS PER CAR), STENCIL TWO 1" VERTICAL LINES AND THE WORDING IN 2" LETTERS - "FASTEN STRAP ANCHOR PLATES BETWEEN LINES" - THUS



251

BOX 20551-20800	F-160	REF.
WHERE USED	CARD	
WESTERN PACIFIC RAILROAD CO. MECHANICAL DEPT. PAINTING & STENCILING ARRANGEMENT		
DR. RWC	CH. AP	624-F-160
REVISED	DATE: AUG 22, 1955	

This file (624-F-160_Painting_and_Stenciling_Boxcars_20551-20800.pdf) was posted to
WPLives.org at Fri Jun 12 01:30:00 PM PDT 2026