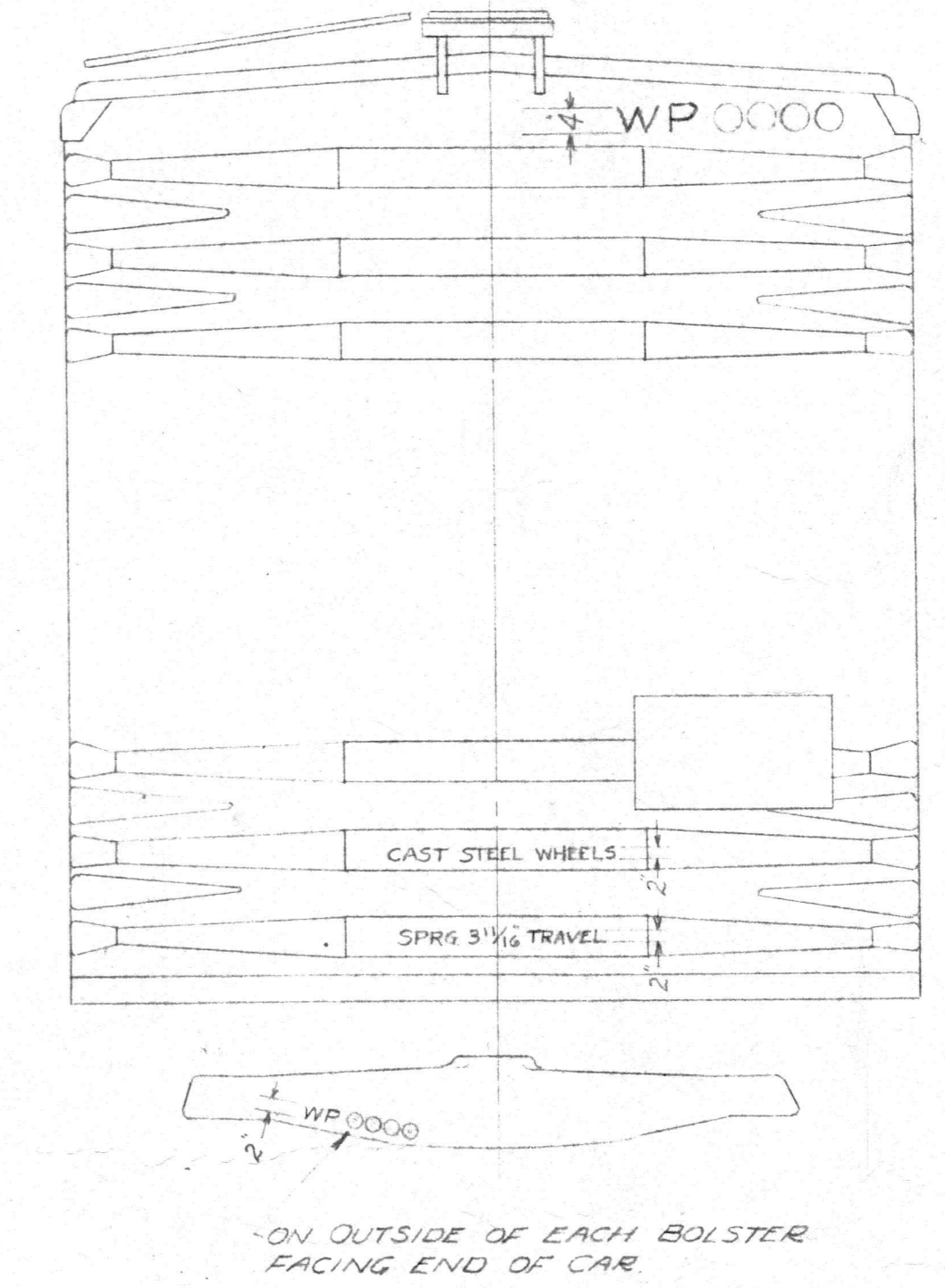
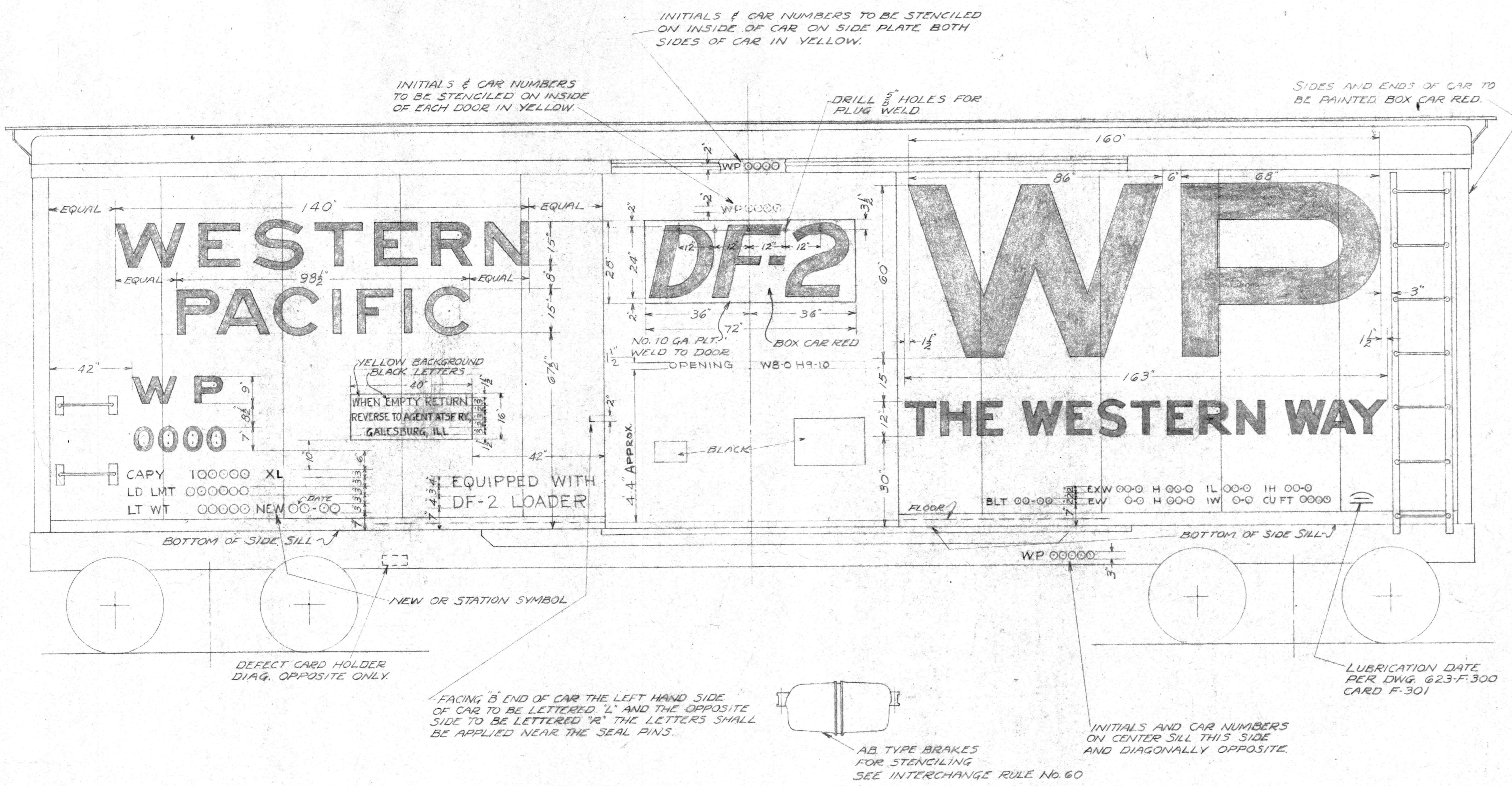


- NOTE:
THE FOLLOWING DRAWINGS OF LETTERS AND NUMERALS TO APPLY-
- 624-F-340 2 BLOCK LETTERS AND NUMERALS.
 - 624-F-300 3" BLOCK LETTERS AND NUMERALS.
 - 623-F-310 4" BLOCK NUMERALS.
 - 624-F-350 4" BLOCK LETTERS.
 - 624-F-360 7" BLOCK NUMERALS.
 - 624-F-330 9" BLOCK LETTERS "P TO W"
 - 625-F-340 15" BLOCK LETTERS "WESTERN"
 - 625-F-350 15" BLOCK LETTERS "PACIFIC".
 - 628-F-350 12" BLOCK LETTERS.
 - 625-F-370 60" "WP"
 - 625-F-320 LETTERS "DF-2" FOR MEDALLION
 - 623-F-300 LUBRICATION DATE STENCILING



NOTE 1: ALL LETTERING AND MARKINGS TO BE YELLOW MATCHING THAT COVERED BY WP SPEC. 5-12 ON OUTSIDE-BLACK ON INSIDE OF CAR AND CHROME ALUMINUM ON CAR CEMENT UNLESS OTHERWISE SHOWN

NOTE 2: ALL LETTERS AND FIGURES 3" OR OVER IN HEIGHT ARE TO BE SOLID AND NOT DISCONNECTED AT BRIDGES.

260

- 6YTKA -

BOX 3421-3422	F-1480	REF.
WHERE USED	CARD	
WESTERN PACIFIC RAILROAD CO.		
MECHANICAL DEPT.		
PAINTING & STENCILING		
ARRANGEMENT		
4212 35-65 +A	DR. RWC CH.	AP.
REVISED	DATE: SEPT. 7, 1960	624-F-1480

This file (624-F-1480_Painting_and_Stenciling_Boxcars_3421-3422.pdf) was posted to
WPLives.org at Fri Jun 12 01:29:59 PM PDT 2026