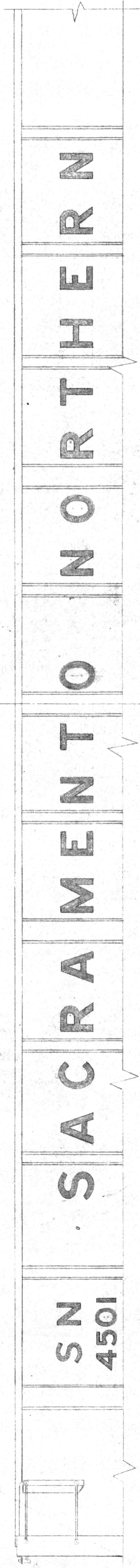


NOTE:
 THE FOLLOWING DRAWINGS OF LETTERS AND NUMERALS TO APPLY:
 624-F-340 2" BLOCK LETTERS AND NUMERALS
 624-F-300 3" BLOCK LETTERS AND NUMERALS
 624-F-310 4" BLOCK LETTERS AND NUMERALS
 624-F-320 7" BLOCK LETTERS
 624-F-330 9" BLOCK LETTERS "A TO O"
 624-F-350 12" BLOCK LETTERS "P TO W"
 625-F-310 12" BLOCK LETTERS

BANKERS TRUST COMPANY,
 OWNER.
 1" LETTERS & SPACES
 FOR CARD F-1332

THE CHASE MANHATTAN
 BANK, OWNER.
 1" LETTERS & SPACES
 FOR CARD F-1331

BANK OF AMERICA
 NATIONAL TRUST AND SAVINGS
 ASSOCIATION, OWNER.
 1" LETTERS & SPACES
 FOR CARD F-1330

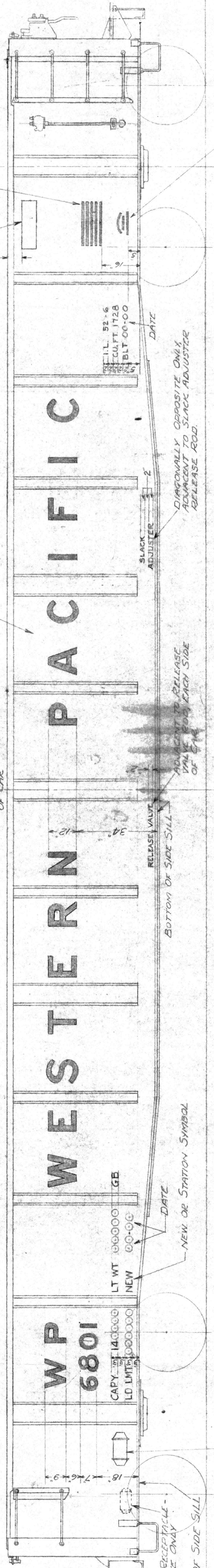


ARRANGEMENT - CARD F-1333

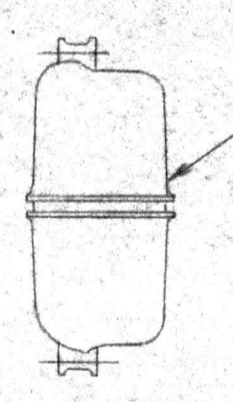
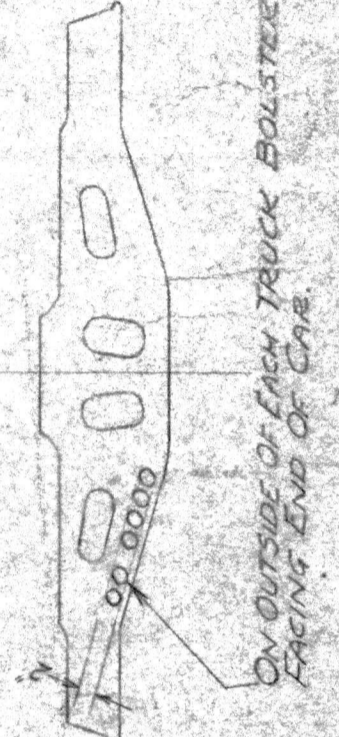
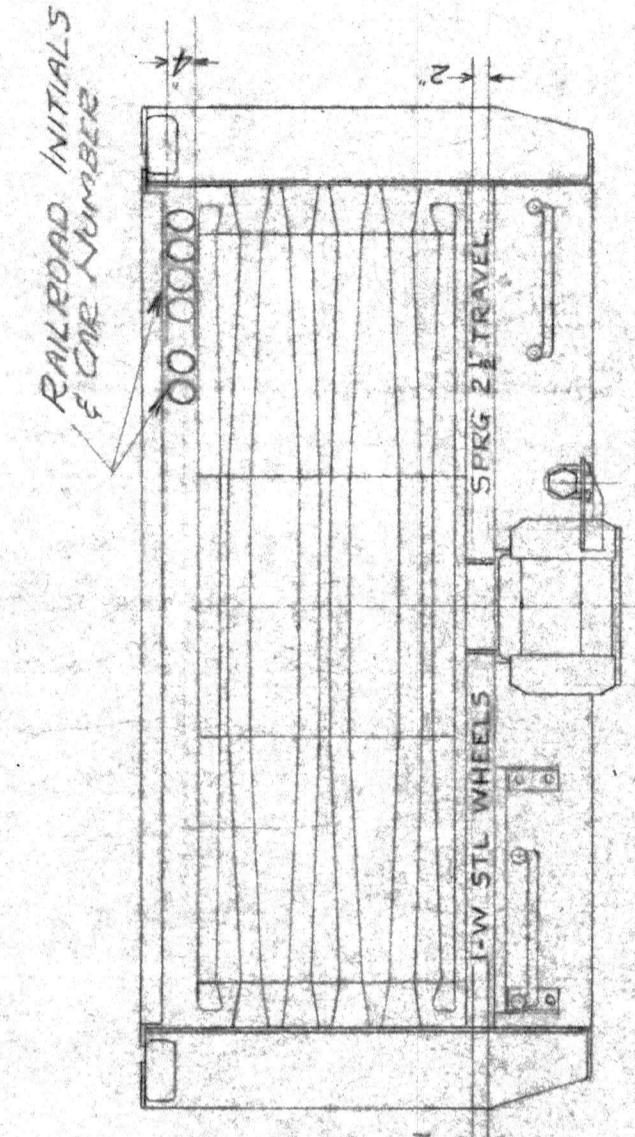
KARGO BEARINGS
 USE AAR CAR OIL ONLY
 CHECK OIL LEVEL EVERY
 6 MDS. IF DEFECTIVE REPORT
 TO CMO WPRR SACRAMENTO, CAL.

OWNERSHIP STENCILING
 WHEN USED
 SEE DETAILS ABOVE

ENTIRE BODY OF CAR TO BE BLACK



ARRANGEMENT - CARD F-1330, F-1331, F-1332



AB TYRE BRAKES.
 FOR STENCILING SEE
 INTERCHANGE BULL NO 60

NOTE 1: ALL LETTERING AND MARKINGS TO BE YELLOW MATCHING THAT COVERED BY W.P. SPEC. 5-12 UNLESS OTHERWISE SPECIFIED.
 NOTE 2: ALL LETTERS AND FIGURES 9" OR OVER IN HEIGHT ARE TO BE SOLID AND NOT DISCONNECTED AT BRIDGES.

WHERE USED	REF.
NONE	GONDOLA CARS S.N. 4501-4525 F-1333
WITH	GONDOLA CARS W.P. 6825 F-1332
WITH	GONDOLA CARS W.P. 6822-6824 F-1331
WITH	GONDOLA CARS W.P. 6801-6821 F-1330
OWNERSHIP STENCILING	

WESTERN PACIFIC RAILROAD CO.
 MECHANICAL DEPT.
 PAINTING & STENCILING
 ARRANGEMENT

DR. BMC | CH. MWS | AP. WEM | DATE: MAY 14 1933 | REVISED: MAY 14 1933 | 624-F-1330

This file (624-F-1330_Painting_and_Stenciling_Gondolas.pdf) was posted to
WPLives.org at Fri Jun 12 01:29:56 PM PDT 2026