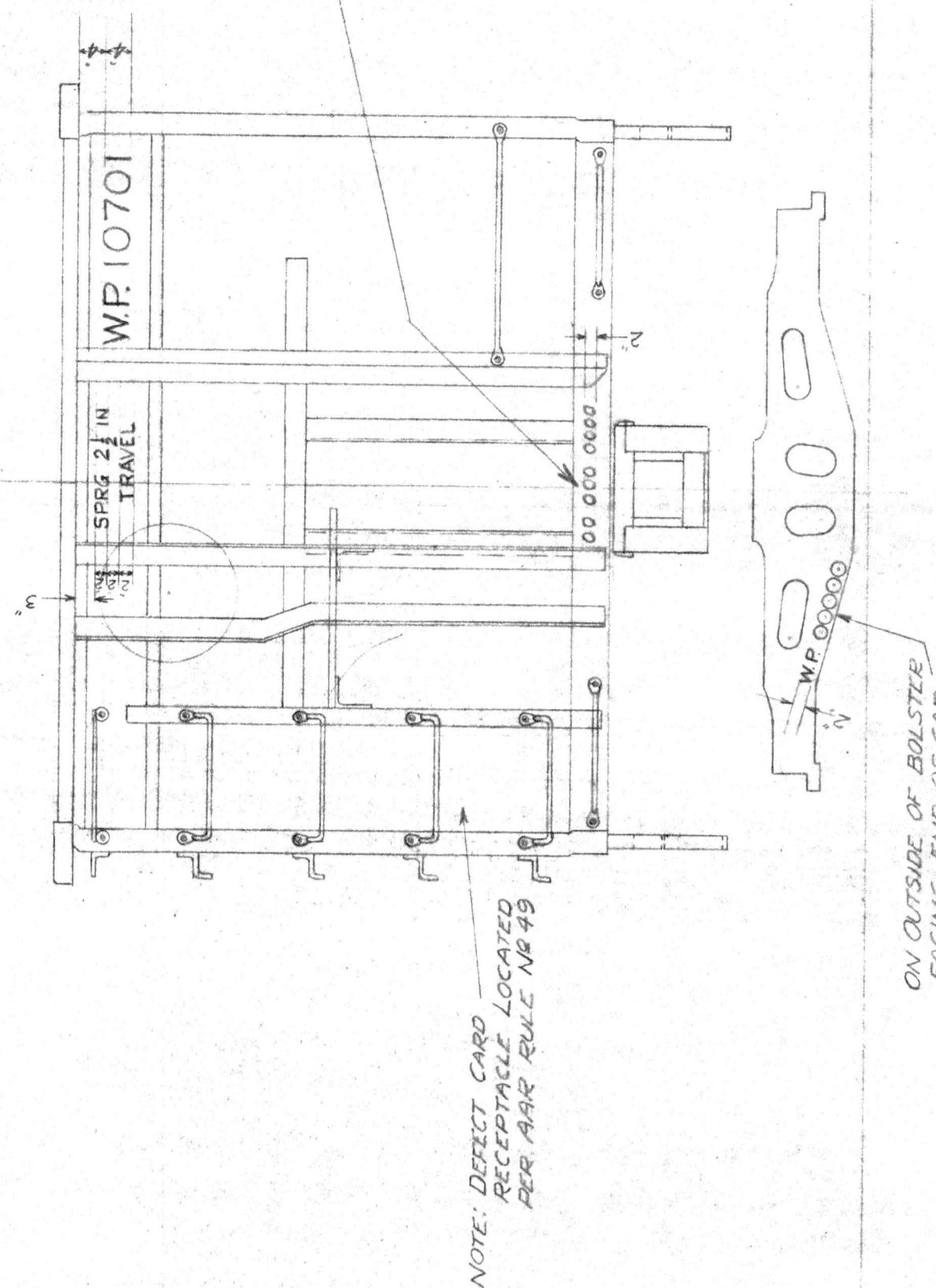
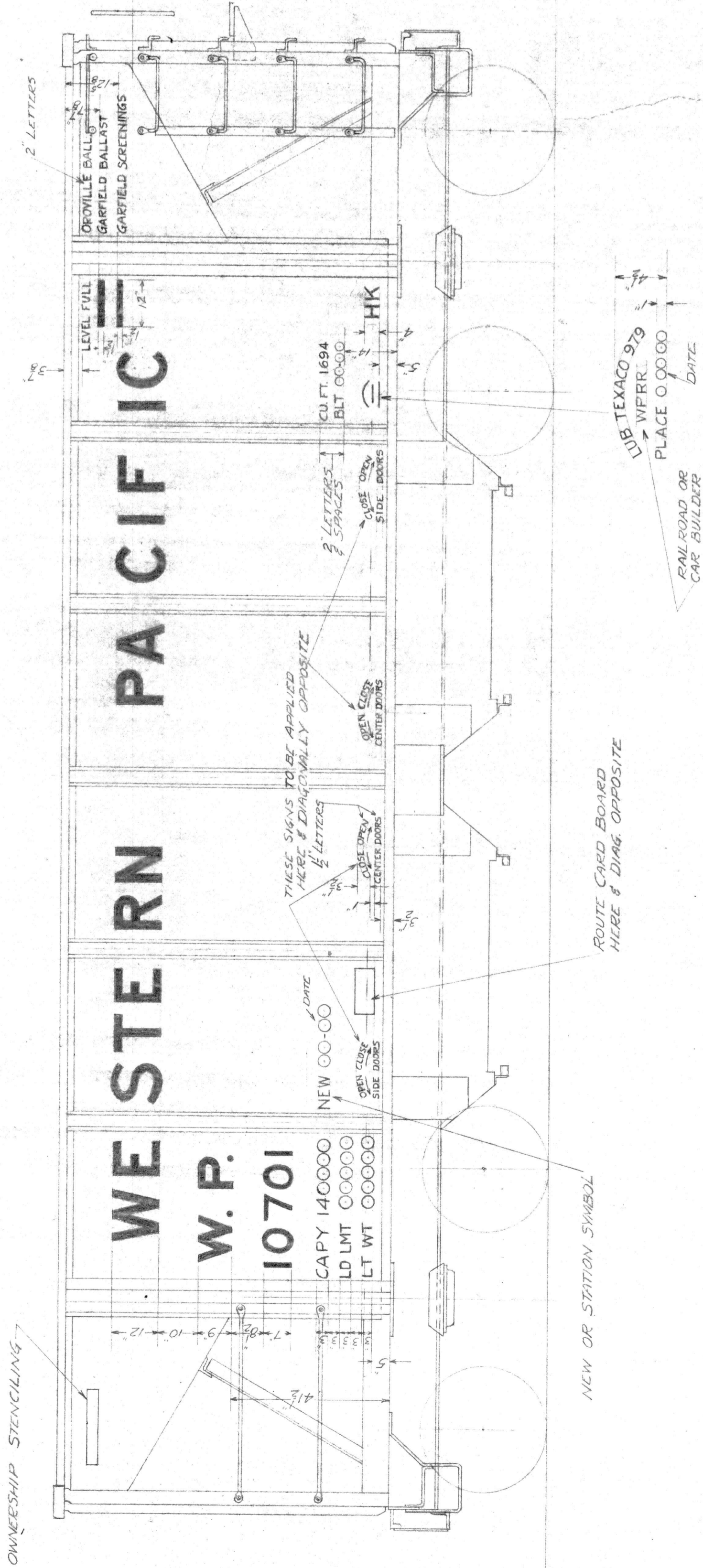


PAINTING NOTES

OUTSIDE OF SIDES & ENDS - BLACK, WP SPEC. S-2.
 UNDERSIDES OF UNDERFRAME - BLACK CAR CEMENT.
 TRUCKS EXCEPT WHEELS & AXLES - ONE LIGHT COAT OF CARBON BLACK.
 ALL LETTERING & NUMBERING TO BE VISIBILITY YELLOW PER WP SPEC. S-12.
 SIZES & SPACING OF LETTERS & FIGURES TO BE AS SPECIFIED.
 LETTERS & FIGURES 3" & OVER TO BE SOLID & NOT DISCONNECTED @ BRIDGES.

THE FOLLOWING DRAWINGS OF LETTERS AND NUMERALS TO APPLY.

- 628-F-350 - 12" BLOCK LETTERS
- 624-F-330 - 9" BLOCK LETTERS P-W
- 624-F-360 - 7" BLOCK NUMERALS
- 624-F-350 - 4" BLOCK LETTERS
- 624-F-300 - 3" BLOCK LETTERS AND NUMERALS
- 623-F-300 - 2" BLOCK LETTERS AND NUMERALS
- 623-F-310 - 4" BLOCK NUMERALS



FOR WORDING SEE TABLE 'X'

TYPE B CAST STL WHLs	HOPPER CARS 10776-10800	F-1091
7-1/4 STL WHEELS	HOPPER CARS 10701-10775	F-1090
TABLE 'X'		
WHERE USED		
3880	D	
3881	C	
3882	B	
3883	A	
3884		
3885		
3886		
3887		
3888		
3889		
3890		
3891		
3892		
3893		
3894		
3895		
3896		
3897		
3898		
3899		
3900		
3901		
3902		
3903		
3904		
3905		
3906		
3907		
3908		
3909		
3910		
3911		
3912		
3913		
3914		
3915		
3916		
3917		
3918		
3919		
3920		
3921		
3922		
3923		
3924		
3925		
3926		
3927		
3928		
3929		
3930		
3931		
3932		
3933		
3934		
3935		
3936		
3937		
3938		
3939		
3940		
3941		
3942		
3943		
3944		
3945		
3946		
3947		
3948		
3949		
3950		
3951		
3952		
3953		
3954		
3955		
3956		
3957		
3958		
3959		
3960		
3961		
3962		
3963		
3964		
3965		
3966		
3967		
3968		
3969		
3970		
3971		
3972		
3973		
3974		
3975		
3976		
3977		
3978		
3979		
3980		
3981		
3982		
3983		
3984		
3985		
3986		
3987		
3988		
3989		
3990		
3991		
3992		
3993		
3994		
3995		
3996		
3997		
3998		
3999		
4000		

WESTERN PACIFIC RAILROAD CO.
 MECHANICAL DEPT.
 PAINTING & STENCILING
 ARRANGEMENT

DATE: JUN 30 1977
 624-F-1090

This file (624-F-1090_Painting_and_Stenciling_Hopper_Cars.pdf) was posted to
WPLives.org at Fri Jun 12 01:29:53 PM PDT 2026