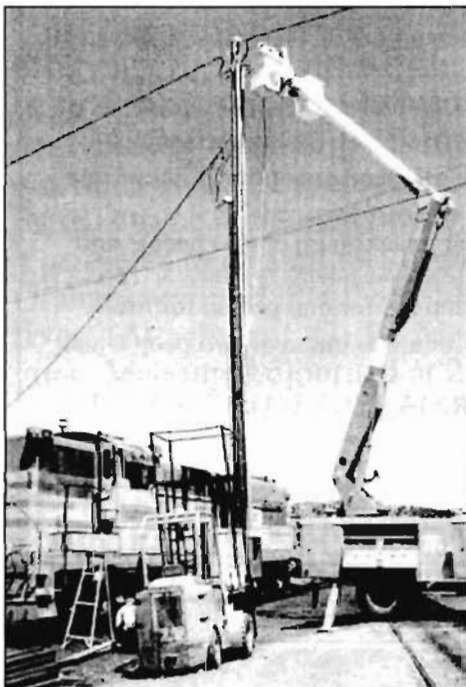
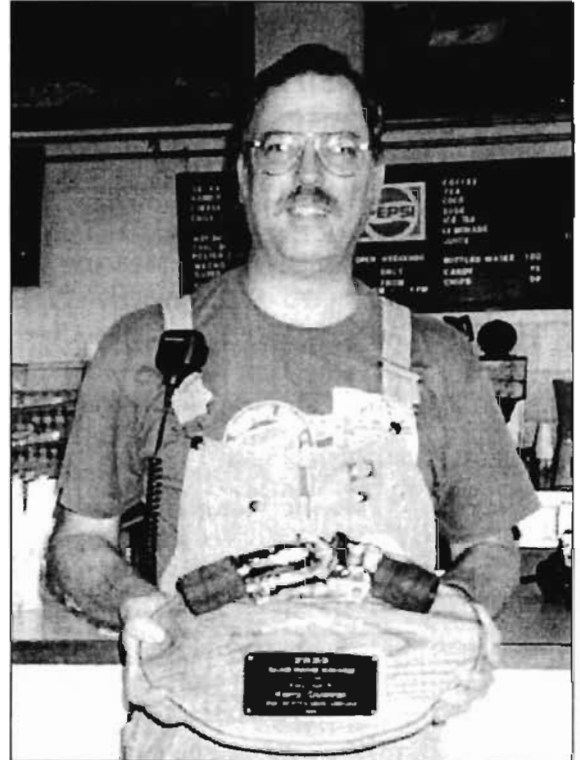


The Train Sheet

Issue No. 92 Preserving "The Feather River Route" Jul/Aug 1998

News from The Feather River Rail Society and The Portola Railroad Museum



ABOVE TOP LEFT: RR Days Train Crew: L to R seated, Kerry Cochran, Don Nelson, Vic Neves, Terry Decottignies, Tom Miller & Andy Anderson. Standing: Melissa McGrath, Will McGrath, Tom Graham, Judy McGrath, Jack Palmer, John Sanford & Jim Gidley. ABOVE LEFT: RR Days *French Toast* breakfast crew. Left to right: David Dewey, Linda Dewey, Lolli Bryan, Edna Ede & Lorna Miner. ABOVE: Beaming with pride, 1998 Glad-hand Award winner Kerry Cochran displays his trophy. Congratulations Kerry!

LEFT: We now have extra lights on our yard and Sierra Rural Electric Coop was kind enough to donate the needed electrical work. Thanks to them, we can walk with greater safety at night!
RIGHT: This our new white Dodge pick-up truck which was graciously donated by Sierra Pacific Power Company. Thank you to both SREC and SPPC for their generous donations!. All photo's, *Norm Holmes*



—THE FEATHER RIVER RAIL SOCIETY—
—THE PORTOLA RAILROAD MUSEUM—
 PRESERVING THE MEMORY OF...
“The Feather River Route”

Portola RR Museum P.O. Box 608 Portola, CA 96122-0608 Museum: (530) 832-4131
 Fax: (530) 832-1854 Office Car: (503) 832-1657

The museum is open daily year round from 10:00 AM to 5:00 PM, except for Christmas Day. Entrance to the museum is free, however, we have a suggested donation of \$2.00.

*The Feather River Rail Society, a tax exempt public benefit California corporation, is the historical society for the Western Pacific Railroad and operator of The Portola Railroad Museum in Portola, California.
 The FRRS is not associated with the Union Pacific Railroad.*

FRRS Tax ID number is 68-0002774
 Member of Tourist Railway Association, Inc.

The Western Pacific Railroad Historical Society (WPRRHS) is a division of The Feather River Rail Society. The Train Sheet is the newsletter of the FRRS. The Headlight is the Western Pacific Railroad historical and model magazine of the WPRRHS and FRRS.

—FRRS BOARD OF DIRECTORS—

- Norman Holmes—Founder and Museum Executive Director ☎(530) 832-4737 ☐ 76043.741@compuserve.com
 Skip Englert—President ☎(530) 832-5348 ☐ skipe@psln.com
 Hank Stiles—First Vice President—Chief Mechanical Officer ☎(916) 363-8572 ☐ flatiron@calweb.com
 Tom Mueller—Secretary ☎(702) 425-1143 ☐ muellfam@aol.com
 Vic Neves—Director ☎(510) 352-4373 ☐ Winterail@compuserve.com
 Doug Morgan—Contracts Officer ☎(530) 832-4131 ☐ dbmorgan@jps.net
 Tom Graham—Director ☎(707) 539-3722 ☐ tomghm@ap.net
 Wayne Monger—Director ☎(707) 426-5510 ☐ 73563.2652@compuserve.com
 Gordon Wollesen—Treasurer ☎(530) 832-5311
 Andy Anderson—Director

—FRRS MEMBERSHIP—

Associate \$15.00 Historical \$22.00 Active \$30.00 Family \$35.00
 Sustaining \$75.00 Life \$300 Family Life \$450

These are the dues for the duration of one year, with **Life** and **Family Life** being a one-time payment.
Historical membership dues are for 4 issues of the Headlight.

ASSOCIATE memberships do not have a vote, do not receive the Headlight, receive only The Train Sheet, and are for one person only.

HISTORICAL memberships receive only the Headlight, do not have voting rights, and are for one person only.

ACTIVE memberships receive both The Train Sheet & Headlight, have voting rights, and are for one person only.

FAMILY memberships receive both The Train Sheet & Headlight and may include all members of one's immediate family, but there is only one vote.

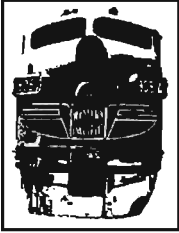
SUSTAINING memberships receive both The Train Sheet & Headlight, and are for a maximum of two people and two votes.

LIFE memberships receive both The Train Sheet & Headlight, have voting rights, and are for one person for life.

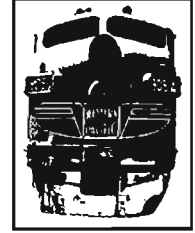
FAMILY LIFE memberships receive both The Train Sheet & Headlight, and are for a maximum of two people and two votes for life.

MEMBERSHIP DEPT. ADDRESS: FRRS PO BOX 1411 CHICO, CALIFORNIA 95927-1411 (530) 892-9609

| | |
|--|--------------------------------|
| Train Sheet Publisher / Membership—Mailing Manager | WPRRHS Administrator |
| Bill Shippen—Sierra Rail Group, Inc. | John S. Walker |
| P. O. Box 1411 Chico, California 95927-1411 | c/o WPRRHS P. O. Box 608 |
| ☎ (530) 892-9609 24-Hour Voice Mail | Portola, California 96122-0608 |
| ☎ (530) 894-7359 24-Hour FAX ☐ wphlight@aol.com | ☐76362.167@compuserve.com |



—THE TRAIN SHEET—
PUBLISHER—BILL SHIPPEN
MANAGING EDITOR—DON BORDEN



Don Borden ☎(530) 357-4563

Contents Copyright ©1998 Sierra Rail Group, Inc & Feather River Rail Society

All Rights Reserved.

Contribution Deadlines: Second Friday of February, April, June, August, October and December.



Web Pages of Interest...

- Frank Brehm' WP Page <http://wpr.railfan.net/>
- WPRRHS / Mike Mucklin <http://members.aol.com/wprrhs/>
- PRRM / Samuel Herschbein <http://www.oz.net/~samh/frrs/>
- SN Page / Garth Groff <http://poe.acc.virginia.edu/~ggg9y/home.html>
- CZ Virtual Museum / Alan Radecki <http://calzephyr.railfan.net/>
- WP Virtual Museum / Alan Radecki <http://members.aol.com/wpwobbly/wpstuff/wpmuseum.htm>
- CZ Home Page / John Wilson <http://www.mindspring.com/~calzephyr/czhome.htm>

—PRESIDENTIAL NOTES—

Hello again, time for a few more words from the Presidents desk. Another operating season has passed, and I would like to thank all the volunteers that have been to the museum this year and helped in the operation of the trains, keeping them running, sprucing up the museum grounds and helping in any way you can and did. Without the faithful dedication of you people we would not be able to operate on weekends.

I would like to thank all of our members for their support through out the years and thank you in advance for the support in the future, we have some great things planned and will keep you informed as we go along. When you see something happening that you would like to be a part of ,just let us know and you are in.

There have been problems and things that have discouraged some of you from coming back, but.I can assure you these difficulties have been taken care of and will not happen in the future. In an organization like ours the volunteers are the most important commodity that we have and we must do what ever it takes to assure the volunteers their time at the museum will be a pleasant and enjoyable

experience.
Until the next time...

Respectfully,
—Skip Englert
President

—TRAIN SHEET NOTES—

Due to illness of one of our Board members and an untimely delay in getting the news reported, this issue is late. We will be bringing out Issue #93 within a month of this issues release date. Sorry for any inconvenience. Sierra Rail Group, Inc is not responsible for the delay. SRG, Inc staff member Adam Clegg helped with production.

—Bill Shippen

—MEMBERSHIP NOTES—

As the company that has contracted with your Society (Sierra Rail Group, Inc.) I feel an update on how mailing, membership renewals, member numbers, membership cards and processing of monies are handled is needed.

When I proposed that Shasta Rail Group (As we were known then, the company still exists for the purpose of publishing in-house newsletters, however we have formed Sierra Rail Group, Inc to handle “other” publishing projects and for contract services, such as we do with FRRS)

handle the membership duties for the museum I learned a valuable lesson. The biggest lesson was that the membership "list" was presented to me in printed form, not on any kind of computer devise. After over 150 hours of hand entering all the known names, addresses, etc. the database was done (Ya, right).

Well, stealth members appeared, seemingly out of thin air. Addresses were either out of date or just plain wrong. No formal presorting had ever been done (to my knowledge anyway) nor had the list been checked against USPS database's.

Now it is, and I believe most of the bugs have been worked out. Those with non-complying addresses will still have some delivery delay, or they might not get their publication at all if the Postal Carrier can't find you. For those of you who haven't received your issues it's not because I'm ignoring you, it's because of more stringent Postal Regulations concerning accuracy of our mailing list. Since we do get a discount because we are non-profit and I mail items as "Machine Compatible", our postage cost have dropped as compared with when the list was handled elsewhere.

Member renewal forms are mailed earlier now, to allow you some time for renewing instead of being mailed late. I was late in June because I took my famous vacation to Portland, a profitable trip for a local mechanic and an even better day for Ford Motor Credit Company. Unfortunately it put us behind by a month, hence the late renewal notice's. Things are on schedule now, and will stay that way.

Member numbers haven't been assigned since I took over, primarily because a system was not in place for a logical numbering system. After much thought I will devise a simple plan and implement it over the next few months. This number will show on your mailing label as well as your membership cards.

Ah yes, membership cards. We are madly working to catch up on getting cards out to all members that need one. From now on

cards will be issued on a monthly basis. Mr. Holmes has okayed me to design a new card, and pending Board approval (for the design and cost) you may be seeing new style cards issued by the end of the year.

When renewals are received at Chico, the checks are deposited with the museums bank, usually during the first two weeks of the month. Credit card orders are sent to Portola for processing. There may be a future change in where renewals are sent (Portola instead of Chico) but this hasn't been decided on, yet. I expect I will still handle the renewal orders and the updates on the database, but the money would go directly to Portola, circumventing the circuitous routing it endures now.

In closing, I want you all to know that we are working hard to get all the membership renewal scheduling on a regular basis (i.e. better time management) and to continually improve the services to the membership via both mailing and quality of service. I am open to any criticisms or suggestions, if you have any, please contact me at the Chico Membership address.

—Bill Shippen



In the High Sierra, the weather is scorching as summer draws slowly to a close; all too soon the cool days of autumn will be upon us. In Portola, Railroad Days are over and Railfan Day is fast approaching and at the museum, there is still a lot of activity. Our new facilities managers Ken Iverson and Doug Morgan have been busy as bees and their work shows. This proves that two people can do more than one.

I have heard from two people who would like to work on our program for control of the replacement parts inventory. This database will let us know exactly what we have and where it is stored, this will save us both time and money. It will be a big job but a very important one. Also we need help cleaning out and then building shelves in some of our box cars, all you people who like to throw away junk and suggested that we do so, please call me, more people make a large job seem smaller and it is more fun to work together.

We have seven locomotives "in service" at this time, more than enough to run the RAL program and enough to give our customers a good selection from which to choose themselves a locomotive.

We have rebuilt several water pumps on our locomotives this year and we are using water treatment in some of the cooling systems, this should prevent problems at a later date. The cab interiors of the SP 2873 and the VIA 6776 have been painted and what a difference this makes to our rental customers and to all who come to look at and work on these locomotives.

This year at Railroad Days we had a first, instead of running around making repairs to keep the trains running, we were working on maintenance and repair items on other equipment and the locomotives ran without our attention. We had a lot of people just stopping and watching us work. This is somewhat new to me and may take some getting use to, but already I think I like it.

The caboose train (more than one goose is geese, so more than one caboose must be cabooses) has seen attention again this season. Cracked windows have been replaced, door latches have been repaired, stoves have received attention and a multitude of small fixes have been made. Things still need to be done, but if it all got done we would have not a thing to do. But I doubt that we will have to worry about that anytime soon.

I want to thank all of you who have come up to the museum and helped out. This museum would be just a display of sad hulks without

your hard work and dedication, very little of what we have done could have been accomplished without your help. The people in Portola that work so hard putting in hundreds of hours each week, could not get us where we are today. Your devotion to this idea that is the Portola Railroad Museum is in large part what has got us where we are today. My hat is off to all of you.

See you at the museum...

—Hank "Flat Iron" Stiles

—EXECUTIVE DIRECTOR NOTES—

Last year I announced that I would like to retire from the responsibilities of Executive Director by December 31, 1999. I would still remain on the Board of Directors and continue to be active in the work of the museum, but would like to have some free time for myself and family. We have grown to a point where there is enough work for a full time person just to keep up with the book work. An endowment fund was established which, if fully funded, would provide an income from interest and dividends for the salary of a paid Executive Director. A number of organizations such as ours have had to go to a paid administrator because of the ever increasing regulations, duties and responsibilities found in today's world. Some have started endowment funds to insure the future of their operations. If we have to pay for this position from general funds there would be little left to fund maintenance and restoration projects.

Our endowment fund has a goal of \$500,000. A very generous donation of 250 shares of a bank stock opened the account and several cash donations have been added to the fund. The balance now stands at \$41,378 (depending on the stock prices) which is far short of our goal. There are a number of ways you can contribute to this fund ie: appreciated stock which you receive current value as a tax deduction, property, as a beneficiary to a life insurance policy and of course cash. A donation to this fund will help

insure the continuation of our museum.
Thank You.

—*Norman W. Holmes*

STEAM GAUGE

Work is expected to start soon on the removal of piping, appliances and non-complying boiler insulation from SP 1215. David Dewey will be in charge of the project and we have a contractor who will remove and dispose of the non-complying insulation. After this work is completed the boiler can then be inspected to evaluate the feasibility of returning the locomotive to operation. Anyone interested in helping with this work is welcome. Contact David Dewey at (530) 534-3676 or at the museum number.

DONATION

Sierra Pacific Power Company has donated a 1990 Dodge pickup truck to the museum. This truck will replace the 1985 Ford that was also donated by SPP eight years ago. The truck was used by Executive Director Norm Holmes who put over 90,000 miles on the truck taking care of museum business. We are very appreciate of SPP's generosity in donating this vehicle.

CLEAN UP

A major clean up, sorting and general rearranging has been going on at the museum the past few months. Headed by Doug Morgan and Ken Iverson, the machine shop and electric room have been cleaned out and replaced with items that were appropriate to that area. Now it is easier to find what you are looking for. Several box cars are next. Hank Stiles has been working on a box car to house our large collection of EMD parts. A major upgrading of our electrical system is in progress — a full report will be in the next *Train Sheet*.

RAILROAD DAYS

The 16th annual Feather River Railroad Days is history. This celebration is our largest event of the year. The event was started by Skip Englert to draw attention to Portola's

railroad heritage and has become a citywide celebration. Our museum has participated in the event every year since its inception. This year the city had its annual parade, with sales, food and entertainment in the City Park. A canoe and decoy race was held in the Feather River.

At the museum we had four model railroad layouts: The Donner Pass Gandy Dancers from Carson City, Sacramento Modular Club from Sacramento, John Huckaby from Ferndale and Jim Druckmiller with his N gauge Buffalo Pass, Scalplock and Defiance layout from Sacramento. Musical entertainment was supplied by Dakota Sid Clifford and Traves Clifford. A western dance demo was presented by Greg and Ev Holmes. We had a french toast breakfast at the museum Sunday morning, spearheaded by Lolli Bryan with Edna Ede, Lorna Miner, Linda Lippincott, David and Linda Dewey helping. A free breakfast was served to the train crew and model railroaders in appreciation for their coming to Portola for the event. With the paid customers, we broke even.

Barbara Holmes and Ken Hitch worked the Gift Shop, Jack Hathaway opened the Annex in the UP baggage car. Linda Dewey and Norm Holmes sold train tickets. Ken Roller operated the museum's model railroad layout, Hap Manitt provided answers to the many visitor questions. Lolli Bryan conducted tours of UP business car 105. This year we ran only one train due to fewer crewmembers and the anticipation of a smaller visitor turnout. We were correct in this assumption as the number of visitors were down this year, possibly because of the adverse publicity about poisoning the water in Lake Davis. Helping on the train crew was Jack Palmer, Vic Neves, Judy, Melissa and Will McGrath, Andy Anderson, Dave Bergman, Jim Gidley, Don Borden, Don Nelson, Kerry Cochran, Tom Miller, Jack Sanford and John Hittner. Kerry Cochran received our annual "Glad Hand" award at the end of the operations Sunday.

HEADLIGHT NOTES

Headlight No. 15 was mailed early July, if you didn't receive a copy please contact the museum office.

MEETINGS & GRANTS

On July 22, Plumas County's economic development organization, Plumas Corporation, held a meeting at the museum to discuss future plans for the museum. Kent Burns, a business consultant led the discussion. Skip Englert, Norman Holmes, Hank Stiles, Gordon Wollesen, Doug Morgan and Steve Habeck represented the museum. Others in attendance were Eric Tolkien and Jeanne Rouden for the City of Portola, Fran Roudebush for Plumas County, John Sheehan and Valerie Nellor for Plumas Corp, Betty Heck for the Eastern Plumas Chamber of Commerce, Kris Miravale for Bank of America, David Simcox from Chico State University, Janice Trueblood for Plumas Job Training, Scott Lawson for Plumas County Museum and Bob Marshall from Plumas-

Sierra Rural Electric Co-op.

A \$20,000 grant was received from the USDA Forest Services Economic Recovery Program to fund a site and marketing plan for our museum. A \$10,000 grant was designated for a feasibility study for the Greenville Railroad Depot. Plumas Corp. has requested proposals from firms that do this work and a contract is expected to be signed in the near future.

—*Norman Holmes*

—HAP'S CABOOSING—

Jul01, 03 Bruce Cooper hauled 13 truck loads of gravel for our entrance road and parking lot.

Jul03 Tobie Smith graded road and parking lot.

Jul10 John Risse repaired broken water pipe.

Jul16 Doug, Hank and Ken Iverson moved traction motors, etc from dock to McCloud box car.

Jul17 Portola Rotary Club dinner at museum with engine rides by Skip and Pat Brimmer.

Jul18-19 Ed Powell replaced windows in 707 and

—SPECIAL FUND STATUS—

| Item | Additions | Balance | Notes |
|-----------|------------|-------------|-------|
| Building | - | \$19,224.25 | |
| WP GP9 | \$325.00 | \$13,569.75 | (1) * |
| SP 1215 | \$148.37 | \$23,748.87 | (2) * |
| UP 737 | - | - | |
| IR 110-1 | - | - | |
| UP 105 | \$80.00 | \$1,665.00 | (3) |
| CTC Board | - | \$260.00 | |
| Library | \$170.99 | \$448.79 | (4) |
| Endowment | \$6,365.46 | \$41,378.54 | (5) |

—OUR NEW LIFE MEMBERS—

Paul & Sarah Jialenella
Roy Dickinson
Charles Lubchenko



(1) John Stein, Jack Palmer, Richard Rowe, Ed De Lozier (2) Keith Winkler and cash donations, interest (3) Cash from car's donation box (4) Sales from 1998 WPRRHS convention (5) Increases in Stock Value and Dividends. * Both are now designated as restoration funds.

worked on air circulating fans in sleeper car.
Jul24, 25 Linda Brimmer repainted crossing cross bucks.

Jul24 Bruce Cooper and Norm Holmes assisted in moving our other M60 tank back from Graeagle.

Aug09 Ken Iverson worked with Plumas-Sierra REA to bring overhead wiring to new main entrance panel.

Aug12 Norm Holmes and John Risse hauled a set of *California Zephyr* seats from Castro Valley for storage in Lolli Bryan's basement. Seats donated by Bill Brommer.

Aug14 Linda Brimmer and John Risse finished painting and installed cross bucks.

Aug16 Mike Barlow, John Walker, Hap Mani, Bob Carr, Ed Wagner, Nick Tynan, Jim Gidley, John Sanford, Pat Brimmer, Ken Iverson and Norm Holmes all helped to pull wiring through conduit for our new electrical upgrade.

Aug18-21 Ken Iverson, Ken Roller, Hap Mani, Norm Holmes, Peter Lyman, Doug Morgan, Don Borden, John Risse, Steve Habeck, Gordon Wollesen, Dave Bergman, Jack Palmer, Kerry Cochran, Tom Graham and Jim Gidley prepared museum for RR days.

Aug23 Ken Roller emptied trash after the event.

—Hap Mani

**—BOARD MEMBER—
 —ATTENDANCE 1998—**

| NAMES | 1998 | | | | |
|-------------|------|-----|-----|-----|-----|
| | AUG | SEP | OCT | NOV | DEC |
| Anderson, A | N/A | P | | | |
| Englert, S | P | P | | | |
| Graham, T | P | P | | | |
| Holmes, N | P | P | | | |
| Monger, W | | P | | | |
| Morgan, D | | P | | | |
| Neves, V | | P | | | |
| Stiles, H | P | P | | | |
| Wollesen, G | | I | | | |
| Mueller, T | P | P | | | |

Starting Mar28, 1998, attendance is recorded as follows:

**P—Present A—Absent I—Illness
 W—Work S—Society Business
 T—Transportation F—Family**

**—FRRS BOARD MEETING—
 —SCHEDULE 1998—**

**Nov14, Dec12
 All Saturday Dates**

NEW WESTERN PACIFIC 1999 ALL COLOR CALENDAR

Fourteen full color photos, drum scanned and professionally printed, saddle-stitched. Your order helps support ongoing efforts by FRRS to preserve the memory of the Western Pacific Railroad. Both steam and diesel, plus Sacramento Northern is represented in this calendar.

—Produced by Shasta Rail Group for FRRS—

Now available from the Feather River Rail Society Gift Shop for \$9.95 plus \$1.50 shipping. California residents please include state sales tax of \$0.82 (Total \$12.27) or purchase from your favorite hobby shop.

—Dealer inquiries invited, please call (530) 832-4131—

Members of Feather River Rail Society may deduct 20% from price, please include \$1.50 for shipping. California residents please include \$0.55 state sales tax (Member total \$10.00).

Available Now!

Please send your order to:

**FRRS Calendar P. O. Box 608 Portola CA
 96122-0608**

VISA and MasterCard accepted!

—REQUEST FOR HELP—

A request for help is being put forth to you, the General Membership of the FRRS. At the Dec 14, 1997 Board of Directors meeting I (Kerry Cochran) was appointed as the chairperson to the Bylaws Committee. This came out of a motion to establish a "Standing Committee" titled, "Bylaws Committee". The Motion reads: "That the Feather River Rail Society shall establish a 'Standing Committee' that shall be titled, 'By Laws Committee' whose responsibility shall be to assess the effectiveness of the existing Bylaws for the organization. If changes, modification's and amendments are needed, the committee shall weigh the needs and make recommendations for change. The operation of the committee shall not be in conflict with the organization's 'Article of Incorporation'. The committee shall prepare guidelines to detail its operation and procedures. The committee shall consist of 3 to 5 members of the FRRS in good standing. The Chairperson shall be appointed by the Board of Directors. Members of the committee shall be appointed and vacancies filled by the Chairperson as needed." With

the guidance of the above motion, procedures that the committee will use during the next few years to receive, review and make recommendations for change to the current bylaws are in place.

NOW, here's where your help is needed. Any member of the FRRS can send items to the Bylaws Committee for consideration in the review of the current bylaws. PLUS, any member of the FRRS can submit his/her name, to become a member of the Bylaws Committee. There are three (3) vacant positions on the committee that need to be filled. Please submit any comments or recommendations for members of the committee to:

Kerry Cochran
Chairperson

FRRS Bylaws Committee PO Box 911
San Bruno CA 94066-0911
e-mail: KC6KNT@CompuServe.Com

or

FRRS Bylaws Committee
PO Box 608
Portola CA 96122-0608

—BOARD OF DIRECTORS MEETING—

—Saturday, September 5, 1998—

—At the FRRS Museum Portola, CA—

Meeting called to order by Pres. Englert at 18:35 hours. Roll Call. Present: Englert, Holmes, Graham, Morgan, Mueller, Monger, Neves, Stiles. Absent: Anderson, Wollesen. President Englert clarified his action to initially accept the resignation of Marty Anderson. The Board agreed to wait until the next meeting to decide whether to fill the position in case of a possible reinstatement of M. Anderson to office. **Minutes of Previous Meeting:** Corrections to August minutes: Executive Directors report should read and include the following: "Boxcar door" was already sold. Motion by Pres. Englert to accept the minutes with corrections. Ayes-7 Opposed-0 Abstained-1. Motion passed. Financial Report: Pres. Englert presented the financial report and suggested that a "cut-off" date be set each month to give time for preparation of report in advance. Board agreed to set the date at the 25th of each month. Pres. Englert acknowledged some officers still don't have a copy of the financial report from August. W. Monger motioned to accept financial report, seconded by V. Neves. Ayes-7 Opposed-0 Abstained-1. Motion passed. **Correspondence:** Correspondence read by N. Holmes. Letter received about preservation of boxcar with the local area towns names on it. Offer was received about a "Guide Book

on Non-profit Management" as reference material. H. Stiles suggested buying a copy for each director. A copy of Ken Burnís report was received. A job application for Senior Director of CSM was received. Plumas Corp is working with the Forestry Service on a grant for a Business Plan for the FRRS Museum in the amount of \$25,000.00 to repair roof. The Board agreed to purchase a copy of the Guide Book on Non-profit Management for each of the Directors of the Board. **Executive Directors Report:** Ex-Director Holmes inquired about the service that helps with the set-up of Non-profit entities for compliance with California statutes. The Board agreed that it was necessary to bring the minutes up to date and file in proper order. A 1990 Dodge truck was donated by the Sierra Pacific Power Co. to Portola Railroad Museum. Discussion on transferring of the title of the truck donated to Ex-Director N. Holmes. Motion will follow later in meeting. The Susanville Telephone Directory has placed a picture of the Portola RR Museum in the directory. The Scenic By-Way event on Oct03-04 has been changed to 3:00pm. Ex-Director Holmes reported the City Council has approved the annexation of the property adjacent to the museum to the city and a proposed 160-170 homes will be developed. Information was received that the museum could sue for damages/ or injury caused by the Lake Davis contamination. The membership surveys have been returned. 40 members received renewal notices but had not renewed. 20 members had not received renewal notices. 16 members were unsure. 278 members have not renewed membership at this time. Discussion followed. N. Holmes and B. Shippen will collaborate on statistics. Registration notices for conventions at Riverside CA and Black Hills SD were received. Discussion followed. Motion 09-98-02. Motion by W. Monger, seconded by H. Stiles, to send 2 (two) delegates to the Association of Railway Museums convention at Riverside Nov04-08, 1998. The cost is not to exceed \$750.00 per delegate. A spouse may attend at extra cost of \$250.00. The extra registration cost of \$25.00 will need to be paid if not registered by Sep01, 1998. Discussion. Ayes-7 Opposed-0 Abstained-1. Motion passed. Motion 09-98-01. Motion by N. Holmes, seconded by T. Mueller, to accept donation of 1990 Dodge Pick-up Truck from Sierra Pacific Power Co. and to be used for museum business by Ex-Director N. Holmes. The truck title will be transferred and registered to Norman Holmes who will be responsible for all costs related to the title transfer. Discussion. Ayes-7 Opposed-0 Abstained-1. Motion passed. Ex-Director N. Homes reported that the 1999 Portola RR Museum Calendar may be ready by Rail-Fan Day. There is 2500 copies in print. The Board agreed to sell calendars for price of \$9.95. The calendar will be made available to all members and the public. This will be advertised in next month's *Train Sheet*. Break. (20:04 hours. Reconvened 20:13 hours.) **Pressing Business Audit:** Motion (09-98-03) by Pres. Englert, seconded by H. Stiles, that the Board of Directors shall place Motion #07-98-07, the CPA Audit measure, into temporary suspension until examination is made. Discussion. Ayes- 2 Opposed-4 Abstained-2. Motion denied. Motion to be modified. Projector Screen and Stand: (Attachment #1) Motion (09-98-04) by V. Neves, seconded by T. Mueller, to purchase a projector screen and stand as outlined by the proposal information for price of \$1,300.00 and to be used by the FRRS for all multi-media events. Discussion followed. Ayes-6 Opposed-0 Abstained-2 (D. Morgan temporarily left the room). Motion passed. **Rotary Proposal:** Pres. Englert reported the Rotary Club of Portola will restore the inside of the Diner Car if they can use the car for a meeting place. The Board agreed to accept a formal proposal for review from the Rotary Club at the next meeting. **Proposed Meeting Dates:** This will be discussed at next meeting. **Silver Lady:** Pres. Englert inquired about a cover letter. Will continue discussion later in meeting. **Internal Controls:** (Attachment #2) Motion to be modified and introduced later in meeting. **Silver Lady:** Board discussed the cover letter from Bill Shippen to do all of the publication and publishing. Board requests proposals for printing costs. The Board agreed to let B. Shippen report back with such proposals at next meeting. The pro-

posals will be available within 14 days. Motion 09-98-05. Motion (09-98-05) by D. Morgan, seconded by H. Stiles, that the Board of Directors of the Feather River Rail society shall place motion #07-98-07, the CPA Audit measure, into temporary suspension for 30 days until the costs not to exceed ceilings can be established to perform an audit on the organizations financial records for the fiscal and calendar years of 1996, 1997, and 1998. At the October meeting of the Board of Directors, another motion shall be submitted to modify motion #07-98-07 to reflect the charges for audit and a request for approval of those costs. Discussion. Ayes-7 Opposed-0 Abstained-1. Motion passed. **Internal Controls:** (Previously discussed) The Board resolved to adopt and implement all internal controls as was introduced in Attachment #2. (D. Morgan was excused at 21:06 hours.) **Aesthetic Improvements:** (Attachment #3) A presentation of a "Proposed Facilities Plan" was given by Eugene Vicknair to improve the grounds and public access of the Portola RR Museum. The Board agreed to discuss the plan further at later meetings. **Involvement with Community:** The FRRS has joined the Old Merchants Association. The Board agreed for Pres. Englert to have continued involvement with this Association. **List of Priorities (Restoration):** Pres. Englert asked that all Department Heads form a list prioritizing projects for the museum to consider. **List:** T. Graham read a list of concerns for the Board to consider. The Board approved of the list. W. Monger stated it was necessary for the museum to set some goals and read a proposed mission statement "that we are willing". Norm Holmes (List). (No list) Motion 09-98-06. Motion (09-98-06) by N. Holmes, seconded by W. Monger, to proceed with the non-complying insulation material removal on SP1215 using contractor PARC-Metalclad Corp. from Sacramento. Preliminary piping removal to be done by David Dewey and volunteer work. Cost for the removal is \$7,910 and cost for pipe removal is \$2,600 with a total cost to be \$10,500.00. Discussion. Ayes-6 Opposed-0 Abstained-1. Motion passed. **Investigation for Improvements:** The Board approved all investigations for improvements. **Items For Discussion:** Filling Openings in OPS. Dept. (Attachment #4) The Board agreed to list of appointments. **Budget:** The Board agreed to allow Dan Brady, CPA, submit a formal proposal for Budget Director. **Personal Property on Museum Grounds:** Pres. Englert inquired about personal property left on the FRRS property. The Board will wait until T. Mueller has assessed the personal property left on the premises to discuss. **Organizational Chart:** T. Graham introduced an Organizational Flow Chart. The Board will discuss at next meeting. **R.A.L. & Caboose Train:** (Attachment #5) The Board will consider and discuss at next meeting. **AAM-Map-1 Survey Report:** (Attachment #6) The Board discussed some suggestions made in the report. V. Neves suggested that Directors must serve in their capacity as Director without duality by doing the work themselves. The Map Survey Report is to be reviewed and discussed further at the next meeting. **Solutions:** Will be discussed further at next meeting. **Meeting Minutes:** The Board agreed that the annual meeting minutes of Officer elections are to be recorded and filed. **Power Outage:** Ken Iverson reported that on Sep21 there is to be a planned power outage. **Thank You Notes:** A suggestion was given for Thank You Notes to be sent to Volunteers and Companies donating to the FRRS. **Shower Car:** T. Graham reported that the cold water is now hooked up to the shower car. **Goals and Objectives:** (Attachment #7) W. Monger submitted a list of goals and objectives for the Board to review. Meeting Adjourned at 22:58 hours. The next Board Meeting will be held on Oct3, 1998, at 18:30 hours, at the Portola Public Library.

—*Kathleen Miller*

Recording Secretary

—DONATIONS—

MALCOM CHURCH, MARK ACUNA, KEN NOREN, GILBERT ROGERS,
PHILIP & JOANN GUIDERA, ROBERT DIEHL, JR., SAM JENKINSON,
DAVE, MAE & HARRISON TATEOSIAN, JIM FOLSOM, CHUCK HOLLAND,
TOM ALEXANDER, LESTER MADDEN, O.W & MARY PERRY,
FAMILY OF LUCIA, W.E. GILLERAN, JOHN & JANET MCCORMICK,
JOHN HUBER, KEN RITZ, STEVE PALUSO, RICK STAFFORD,
LYNDA & WAYNE MONGER, LEONARD RIMICCI, R SHAFER, B GARRETT,
N THOMAS, M BRODERSEN, NORMAN ANDERSON, E LONG, G NORDSTROM,
D PARNELL, W HARTLEY, D COATE, M MAXWELL,
JACK BELGUM & ANN ARENA, B DANNIELS, M MALNEKOFF,
JOHN SULLIVAN, CHARLES LUBCHENKO.

Thank you to all of these members who gave in one way or another to our Society.
Your Donations help keep the Museum active and progressive. Thanks again!



Our SN 146 shows her original paint scheme of black with orange stripes, with silver on portions of the handrails and silver foot boards, while awaiting assignment at Sacramento in the early 1950's. Note the angled number boards on the cab roof but no yellow beacon. SN Steeple Cab #653 is behind her. —Courtesy Brad Lomazzi