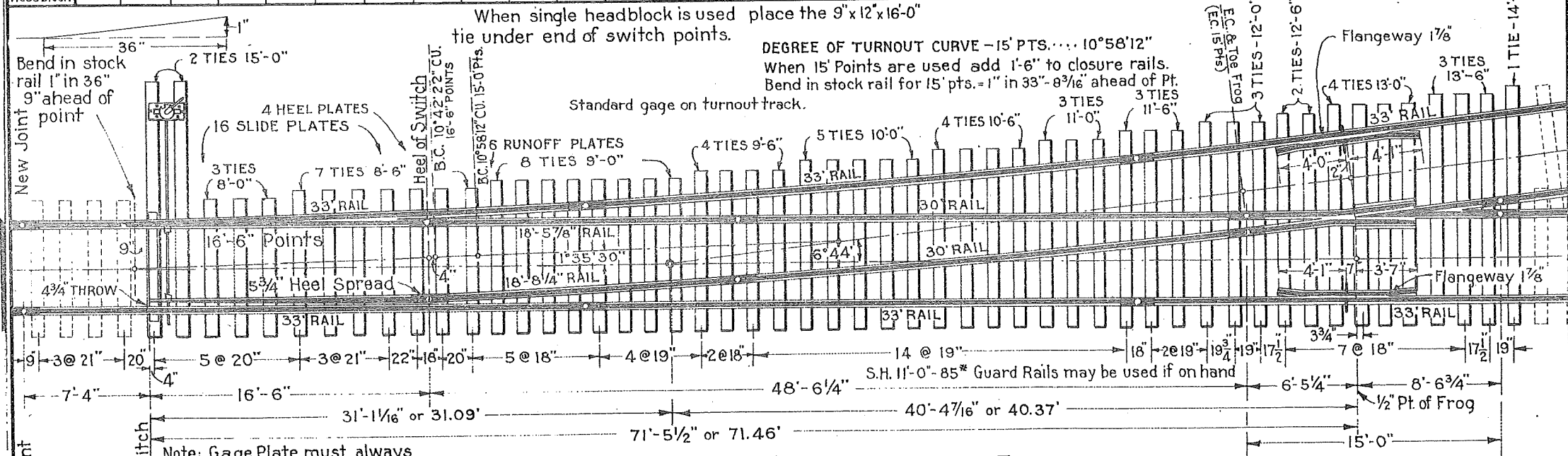
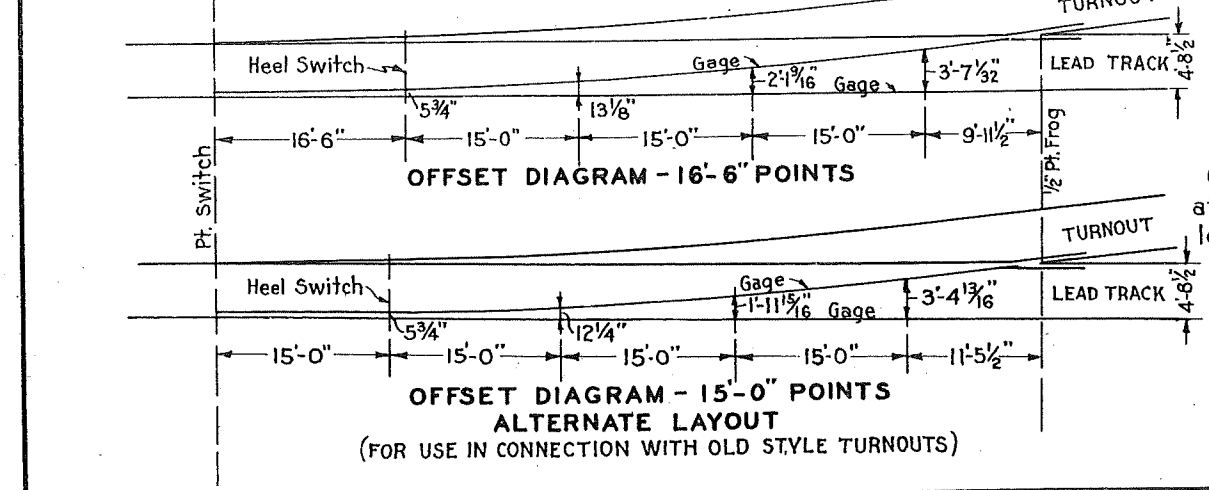


	PIECES 7"x 9"														TOTAL NUMBER PIECES	TOTAL FEET B.M.
	8'-0"	8'-6"	9'-0"	9'-6"	10'-0"	10'-6"	11'-0"	11'-6"	12'-0"	12'-6"	13'-0"	13'-6"	14'-0"	15'-0"		
For Double Headblock	3	7	8	4	5	4	3	3	3	2	4	3	1	2	52	2890.1
For Single Headblock	4	7	8	4	5	4	3	3	3	2	4	3	1	1-9"x12" x 16'-0"	52	2916.6

FROG ANGLE 6° 44'
 DEGREE OF TURNOUT CURVE 10° 42' 22"
 LEAD 71'-5 1/4"
 CLOSURE RAILS ... 2-30', 1-18'-8 1/4", 1-18'-5 7/8"
 Other lengths may be used for closure rails but minimum length must not be less than 15 feet.



PLAN OF NO. 8 1/2 TURNOUT COMPLETE



APPROVED: *J. J. Williams*
 CHIEF ENGINEER
 APPROVED: *E. W. Mason*
 VICE PRESIDENT AND GENERAL MANAGER

THE WESTERN PACIFIC RAILROAD CO.
 STANDARD
 NO. 8 1/2 TURNOUT COMPLETE
 FOR USE WITH 85 LB. 33' RAIL-16'-6" POINTS
 Scale: 1/8" = 1'-0" Adopted Feb. 1, 1937