

WESTERN PACIFIC  
*Mileposts*

JULY - AUGUST 1964

PRESIDENTIAL RR SPECIAL  
PRESS - RADIO - TV

ENTRANCE

WESTERN  
PACIFIC



# Mileposts

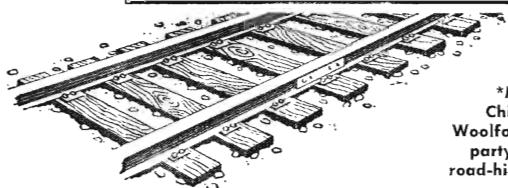
WESTERN PACIFIC

Volume XVI, No. 4

JULY-AUGUST, 1964

\*Milepost No. 158

Public Relations Department  
**WESTERN PACIFIC RAILROAD**  
 SACRAMENTO NORTHERN RY.  
 TIDEWATER SOUTHERN RY.  
 526 Mission Street  
 San Francisco, Calif. 94105  
 Lee "Flash" Sherwood, Editor

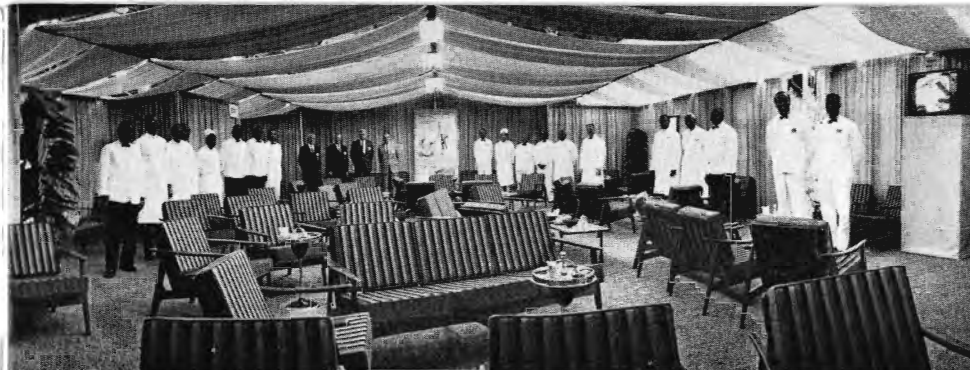


\*Milepost No. 158:  
 Chief Engineer F. R.  
 Woolford and inspection  
 party pass by on rail-  
 road-highway Hy-Railer.

## IN THIS ISSUE

Page

WP's Dining Car Crew at Republican Convention Press Lounge (See story Pages 3-5).....	Front Cover
Railroad Lounge Praised by Cow Palace Newsmen.....	3
Marketing Division Promotes Two .....	5
Dear Editor: .....	6
Retirements .....	8
Mileposts in Gold.....	10
Caboosing .....	13
In Memoriam .....	23
Railroad Lines .....	Back Cover



## Railroad lounge praised by Cow Palace newsmen

Dining car crews and their super-  
 visors from the three railroads  
 pose for picture inside the  
 railroad's hospitality lounge.

THE greatest media assemblage of San Francisco's history converged on the city during the week of July 12 to cover the Republican National Convention held in the worldly-famed Cow Palace. To handle the largest tempo-  
 rary communications network ever set up for this type of gathering, reported *Editor & Publisher* magazine, an estimated 6,000 men and women were on hand.

Reporters, TV-magazine-newspaper cameramen, TV-radio announcers, messengers and other members of the press worked at a frantic pace on long-hour weary assignments. Temperatures on the Cow Palace floor soared from the heat of hundreds of Kleig and camera lights. Jostling crowds made getting pictures an ordeal. Words were lost during interviews and speeches because of the roar of crowds, bands, and other elements. Yet, thousands of pictures and words were filed and perhaps a million feet of television film left the arena aimed at newspaper, magazine, radio and television audiences around the world. The final results are a tribute to the efforts of the combined working press.

Whatever respite these people had from their arduous tasks, the most popular haven of all was the hospitality lounge provided for the working press by Western Pacific, Santa Fe and Southern Pacific railroads. As one newsman said in aptly extending his thanks, "it was the only place to die!" "Here," he added, "any 'dying' news-

(Continued on Page 4)

Railroad crossing signal marked location of  
 entrance to hospitality lounge for the press.





## Railroad lounge . . .

(Continued from Page 3)

man (and they averaged about 4,000 daily) could find a quiet, cool spot and relax in an easy chair (if one was unoccupied) with a cup of coffee and a cigarette, a beer, a sandwich or two, and a variety of tasty snacks."

One corner of the lounge was particularly popular with the "high-heeled" representatives of the fourth estate. "Barking dogs" never had it so good when, with shoes removed, they were eased onto one of the electric vibrating foot massagers designed to restore feeling to numb and aching feet. The resulting effect made it difficult for some of the "tired dog"-owners to remain awake.

During their coffee breaks, however, the visitors were able to keep up with happenings in the main arena by means of three television sets spaced around the lounge and tuned in on different channels.

The press worked from two scaffolds, in mezzanine booths, and anywhere they could squeeze into the Cow Palace for interviews and photos.

THE principle reason for the tremendous success of the railroad lounge, was the combined unrelenting efforts of eighteen dining car waiters, six each from the three railroads. Circulating around the lounge from mid-morning until late each evening dispensing food and beverages, these men made a fine impression on those who enjoyed their services. The crews were highly praised by their superintendents, W. J. Powell, WP; S. Sandstrom, SFe; and T. Lochhead, SP; who also put in long hours of supervision, arranging for adequate supplies, and lending a helping hand where required during peak hours.

Arrangements for the establishment of the lounge (a repeat of one the three railroads sponsored in 1956), its equipment and decorations were made jointly by public relations officers of

(Continued on Page 5)

## Marketing division promotes two



K. R. Stoney



J. H. Hyland

KENWAY R. STONEY and Jack H. Hyland were appointed to new positions in the marketing division's pricing section effective August 1. Stoney, former assistant freight pricing manager, became freight pricing manager and Hyland, former chief-rate bureau (TC), succeeded Stoney as assistant freight pricing manager.

"Ken," a native of Chicago, joined Western Pacific's Chicago sales office on April 1, 1930 as a clerk. After advancement to export-import rate clerk and other clerical positions, he became

sales representative prior to moving to San Francisco as chief of the rate bureau in 1942. He returned to Chicago in 1945 as eastern foreign freight agent and three years later came back to San Francisco as assistant freight pricing manager. Since joining the pricing department "Ken" has been involved in many phases of rate legislation. His new area of responsibility will be related to rates in the Pacific Southeast Freight Bureau territory.

In 1963, "Ken" attended the Stanford University Graduate School of Business and received his diploma from their Transportation Management Program.

"Ken" married the former Neola Mills of Streeter, Illinois in 1949 and they presently live in Millbrae. "Ken" and "Jackie" are team members in a Millbrae Bowl bowling league, and "Ken" plays to a 12 handicap at Crystal Springs Golf Club. He is always ready for a game of dominoes and too frequently for his opponents he comes out winner.

(Continued on Page 6)

## Railroad lounge . . .

(Continued from Page 4)

the three roads. These men, ably assisted by other public relations personnel and selected employees, were kept on the go checking admittance credentials of the working press, taking messages, locating off-duty newsmen, and maintaining a steady flow of visitors in and out of the lounge. During peak hours there were often two lines of news people awaiting entrance to the lounge because of crowd restrictions enforced by the fire marshal.

All in all, everyone taking part turned in an admirable job.

And, thanks to the comforts of the lounge and the service provided, all news men and women were kept alive and returned to their jobs refreshed and rested.

## COVER PICTURE

Yeoman performances in the lounge were given by WP dining car crew Felton Jones and Eugene Curney left-right of WP sign; Robert Tillman, George Fields, Manager William H. Powell, Willie Williams, Frank Allain left-right on steps.

## Marketing division . . .

(Continued from Page 5)

Jack Hyland is also a native of Chicago, but moved with his parents at an early age to Southern California where he received schooling in Los Angeles and Pasadena.

He first worked for Western Pacific during school summer vacations, but after graduating he was employed in Southern Pacific's passenger accounting department where he worked alongside a pretty young lady named Doris who later became Mrs. Trustring "Tux" Wadsworth.

Looking for better advantages, he entered Western Pacific's marketing division on August 2, 1926 and has since held practically every position in the pricing department. He has been chief of the rate bureau since February 2, 1953, handling Trans - Continental rate adjustments. These various positions have given Jack a full background of terminal, transit, local Mountain Pacific and joint North-Southcoast rate problems. His new area of responsibility will continue to be Trans-Continental rates.

At one time Jack was associate editor of a previous company magazine and authored a column "Hy-Lites" for many years. He is a past president of the former WP Club and bowling league. His favorite activities are bowling, fishing, coin collecting, dominoes and gin rummy.

Jack married Janie Hyland on August 6, 1945 and while they own their own home in San Carlos, they presently live in an apartment in Laurel Heights district of San Francisco. A prominent member of the family is "Muffie," a lovable cocker spaniel.



# Dear Editor:

### Nation's finest train

We recently completed a transcontinental rail trip to New York and Nebraska. I made reservations on the Nation's finest train.

I had long wanted to ride your Vista-dome *California Zephyr*. Now I will long remember doing so, and look forward to this again.

The train is gorgeous. I could spend an hour just looking at it. I enjoyed the tape-recorded music. The meals in the dining and Cable Car cars were delicious and the prices were also very reasonable.

But, best of all, the Vista-domes. The Feather River Canyon and Colorado Rockies are beautiful and we liked the announcements and dinner reservations made by the Zephyrette. By the way, the folder "Vista Dome Views" is very helpful. You know just what you are seeing.

There is no comparison between your nice train and another one we rode and I would think anyone would gladly get their reservation in early and take a few extra hours to really enjoy their trip aboard "the most talked about train in the country."

I sincerely hope your Vista-dome *California Zephyr* will stay the way it is for many years.

Larry Thomas  
5400 Columbus Avenue  
Van Nuys, California

### Thank you!

I want to thank all who contributed to the wonderful gift and who attended the enjoyable dinner upon my retirement.

It has been a pleasure to work with the fine people of the Western Pacific throughout the past 45 years.

With kindest regards to all.

Mary N. Evans  
336 North Bridge Street  
Winnemucca, Nevada

\* \* \*

### WP cars get around

A friend in the railroad industry recently informed me that your company publishes a bi-monthly magazine *MILEPOSTS*. I am a public school teacher and frequently receive questions from students concerning modern railroad-ing. Would it be possible to have my name added to the mailing list? (Editor's note: This has been arranged).

Here in the east we see quite often cars with your trademark. They seem to be in good repair and well painted, which speaks well for your maintenance department.

Charles W. Petersen  
47 Maple Avenue  
Danbury, Connecticut

The freight car fleet of U. S. railroads, placed end to end, would form a solid train 14,348 miles long.

## 50th Wedding Anniversary

You will remember Allison Rowland who retired some ten years ago as commercial agent in my office.

On July 18 along with a great many of Al's friends, I attended Al and his good wife Myrtle's 50th Wedding Anniversary.

The celebration, held in Oakland, was a gala occasion. A "Money Tree" was presented to them which provided an interesting sidelight, particularly so with the most humorous comments from Al, as he unwrapped each bill from the various branches of the tree.

Al will be remembered by many friends on Western Pacific, even though he would now come in under the category of one of the "old timers." He started with Western Pacific at the Oakland freight house in 1910, was in the famous "arch" picture showing the railroad's first passenger train entering Oakland on August 22, 1910.

Al made many friends for Western Pacific throughout his career.

He was National Rifle Champion in the year 1922 and received an engraved rifle for his feat from the President of the United States. His hobbies for many years and to this day are archery and golf. He makes his own bows and arrows with which he is most accurate, and he currently shoots golf in the 70's.

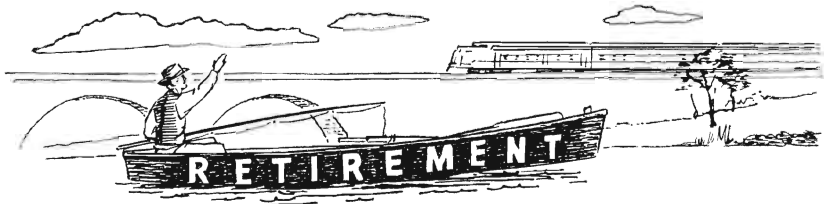
I know all of Al's friends will enjoy hearing about Al and Myrtle and wish them continued enjoyment in retirement.

Carl W. Mangum  
District Sales Manager (Freight)  
Oakland, California

The old dollar is going a lot further these days . . . like into outer space!

\* \* \*

Poise is the ability to be ill at ease naturally.



In behalf of all employees of Western Pacific and its affiliated companies, MILEPOSTS extends sincerest best wishes for happiness to the following railroaders whose applications for annuity have been received:

*Apolinar A. Blanco*, Sacramento Northern section laborer, 2nd subdivision, 31 years 6 months.

*Clay W. Bridges*, B&B foreman, Oakland, 32 years 7 months.

*Mary N. Evans*, telegrapher, Winnemucca, 45 years 9 months.

*Thomas A. Jenson*, electrician, Oakland, 17 years 5 months.

*Angelo J. Lalla*, pipe fitter, Oroville, 21 years 9 months.

*John P. Moran*, mate-marine department, San Francisco, 36 years 4 months.

*Marion M. Nesbit*, per diem clerk, San Francisco, 22 years 3 months.

*William J. Pearson*, office and estimating signal engineer, San Francisco, 16 years 11 months.

*Willie B. Roller*, boilermaker helper, Sacramento, 20 years 8 months.

*Raymond A. Ruepp*, locomotive engineer, Oakland, 36 years 9 months.

*Joseph E. Smales*, conductor, Elko, 42 years 5 months.

*Robert L. Thomas*, foreman Oakland shops, Oakland, 21 years 9 months.

*John S. Vinton*, locomotive engineer, San Francisco, 36 years 8 months.

*Kelly E. Wilson*, extra gang laborer, Delle, Utah, 11 years.

*Howard J. Winn*, roundhouse clerk, Portola, 21 years 10 months.

*Turner G. Winton*, marine oiler, San Francisco, 43 years.

## Leo J. Gosney

Leo J. Gosney, vice president and comptroller since December 14, 1955, and vice president - consultant since June 24, 1964, retired from the railroad on September 30, 1964, completing a long, continuous service which began with the Sacramento Northern Railway in 1923.

He became a Western Pacific traveling accountant in 1931 after holding

various accounting positions with the Sacramento Northern including that of head accountant. His Western Pacific positions include special accountant, assistant general auditor, general auditor, and in September, 1950, comptroller and general auditor.

Leo was born in Lyonsville, California on September 3, 1903, the son of

(Continued on Page 9)

## Leo J. Gosney . . .

(Continued from Page 8)

Luther O. and Teresa Jane (Stevens) Gosney. Shortly after becoming a Sacramento Northern employee he married Alice May Couture on February 16, 1924.

A graduate of Sacramento High School, he later attended the University of California's extension division, Heald's Business College, and was the second Western Pacific officer to attend Harvard Business School's advanced management program in the spring of 1952.

Leo is a member of the Masonic Lodge, Scottish Rite, Islam Temple A.A.O.N.M.S., Transportation Club, California Golf Club, Columbia Country Club of Washington, D.C., and the Financial Executives Institute.

Anyone unable to locate Leo at his home, 15 Anzavista Avenue, San



Francisco, following his retirement, would probably do well to try the California Golf Club where he has a registered 9 handicap. Then, too, he might be boating or fishing around some of the West's more popular areas for those sports.

## Trusten P. Wadsworth

Trusten P. Wadsworth, assistant director of pricing, retired from Western Pacific on July 31 after a service of 35 years.

"Tux" was born in Sutter, California, July 5, 1899. He became a rate clerk for the railroad in 1929 at which time he had a Strathcona Fellowship in transportation economics from Yale University and a certificate of graduation from University of California. Following experience gained in various marketing department positions, he became assistant general freight agent in 1940, and on February 1, 1953 was appointed assistant freight traffic manager.

On June 15 "Tux" also retired from Golden Gate College after 37 years as

instructor of freight rates and 20 years as Dean of the School of Traffic. Many former students of his now hold responsible positions in traffic departments of industries, railroads, motor carriers, and government organizations throughout the country. A retirement luncheon sponsored by Golden Gate College on June 5 was attended by over 200 students, graduates, faculty and others.

He is a founder member, American Society of Traffic and Transportation, 1950; certificated member, 1958, while serving as President of California Chapter, and was elected regional vice president in 1959.

"Tux" married Doris May Lind, of

(Continued on Page 11)

# MILEPOSTS



# IN GOLD

MILEPOSTS congratulates the following railroaders who are eligible for Service Pin Awards during the months of July and August, 1964:

### 40-YEAR PINS

Asa W. Arnall .....	Conductor .....	Western Division
V. Lee Classen .....	Head Clerk-Misc. Accounts .....	San Francisco
Leon E. Emms .....	Industrial Clerk .....	Oakland
James R. Hillam .....	Signal Supervisor .....	Elko
Anne E. Lapham .....	General Bookkeeper .....	San Francisco
Henry J. Madison .....	Manager of Stores .....	Sacramento
Raymond N. Moore .....	Locomotive Engineer .....	Eastern Division
Carl R. Nipper .....	Asst. to Dir. of Industrial Development .....	San Jose
James A. Potter .....	Chief Clerk-Agents' Acctg. .....	San Francisco
Lillian Swartzburg .....	Freight Accounting Clerk .....	San Francisco

### 35-YEAR PINS

Ernest O. Dart .....	Carman .....	Oroville
Carl Flaig .....	Cashier .....	San Francisco
Sam S. Gibson .....	Carpenter .....	Western Division
Nathan Johnson .....	Host'er Helper .....	Stockton
Mack McDaniels .....	Chef .....	Dining Car Department
George L. Merchant .....	Track Laborer .....	Western Division
James F. Murray .....	Conductor .....	Western Division

### 30-YEAR PINS

Peter Del Moro .....	Statistical Clerk .....	Sacramento Shops
Leo F. Delventhal, Jr. ....	Mgr. Marketing Field Services .....	San Francisco
William T. Kennedy .....	Switchman .....	Western Division
Alfred T. Penzel .....	Sales Representative .....	Oakland
John C. Sterner .....	Dist. Special Agent & Claim Agent .....	Stockton
Raymond C. Smith .....	Switchman .....	Western Division
Wilbur Stubblefield .....	Conductor .....	Western Division
Walter A. Theobald .....	Claim Clerk .....	San Jose

### 25-YEAR PINS

Dominic W. Goodman .....	Switchman .....	Western Division
Harry R. Loyer .....	Clerk .....	San Francisco
Lino Micheli .....	Ice House Laborer .....	Carlin, Nevada

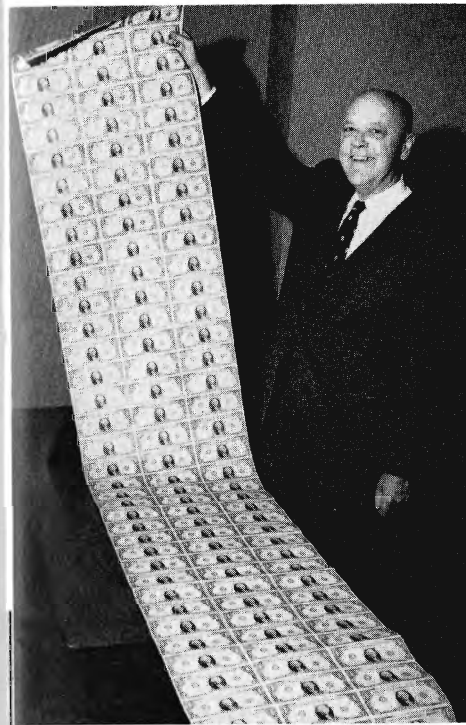
### 20-YEAR PINS

Barbara L. Bergman .....	Clerk .....	Oakland
Francis W. Gorder .....	Telegrapher .....	Western Division
Richard L. Hussey .....	Fireman .....	Western Division
Shirley F. Lee .....	Telegrapher .....	Eastern Division
Joseph D. Locati .....	Brakeman .....	Western Division
Clarence McAfee .....	Waiter .....	Dining Car Department
Jack A. McPherson .....	Baggage-man-Janitor .....	Western Division
Lawrence E. Moe .....	District Sales Manager .....	Detroit, Michigan
Harold A. Sullivan .....	Telegrapher .....	Western Division
Albert B. Tedd .....	Baggage-man-Caller .....	Western Division(*)

### 15-YEAR PINS

L. William Breiner .....	Assistant Superintendent .....	Sacramento
Richard F. Carter .....	Electrical Engineer .....	Sacramento Shops
Martin J. Etchemendy .....	Fireman .....	Eastern Division
Roy R. Gifford .....	Asst. Signal Supervisor .....	Wells, Nevada
James C. Grogan .....	B&B Carpenter .....	Western Division
John K. Johnson .....	Carman .....	Oakland
Larry L. Lawson .....	CTC Maintainer .....	Keddie
Andres J. Norgaard .....	Yard Clerk .....	Eastern Division
Henry N. Panchof .....	B&B Carpenter .....	Western Division
Arthur J. Sciotto .....	Communications Maintainer .....	Elko
Harry F. Simon .....	Relief Signal Maintainer .....	Sacramento
Mary Soohodolsky .....	Stenographer-Clerk .....	San Francisco
John L. Studebaker .....	Signal Draftsman .....	San Francisco

(Continued on Page 11)



"Don't ask me to count 'em," said "Tux" Wadsworth holding up display of one-dollar bills Scotch-taped together and presented to him by traffic managers of firms served by WP and other old-time friends of "Tux" at recent luncheon prior to his retirement.

## Trusten P. Wadsworth . . .

(Continued from Page 9)

Berkeley, on August 25, 1928, and they have two married daughters. Nancy, now Mrs. Keith Barton Nelson, lives in Oegstgeest, Holland, where Keith, a PhD from University of California, is doing post-doctoral work at the University of Leiden. Their daughter, Johanna, was born there on November 26, 1963. Diane is now Mrs. Keith Dabney Fisher, of Berkeley. Her husband is a Lieut. JG in the U. S. Navy and their son, Thomas Wadsworth Fisher, was born at Key West, Florida, on December 26, 1962. Both daughters participated in many figure skating shows and in State competition during high school and college years.

"Tux," his father and mother, Doris, her father and mother, and Nancy and Diane were all born in California. The unusual chain of native sons and daughters was broken by both grandchildren, as indicated above.

On August 19 "Tux" and Doris sailed from New York on the Cunard Line's *Queen Mary* for a visit with their newest grandchild, Johanna. Both expect to take up golf upon return to their home in Berkeley.

## Mileposts in Gold . . . (Continued from Page 10)

### 10-YEAR PINS

J. E. Brennan .....	Agent .....	Portola
L. E. Burns .....	O.S.&D. Clerk .....	San Francisco
R. C. Clark .....	Conductor .....	Western Division
Warren Essary .....	Track Laborer, Extra Gang #33 .....	Eastern Division
R. R. Grajeda .....	Laborer .....	Western Division
E. L. Hanway .....	Conductor .....	Western Division
M. J. Makuck .....	Switchman .....	Western Division
W. N. Meyers .....	Conductor .....	Western Division
George A. Pearce .....	Rate & Division Clerk .....	San Francisco
J. W. Pence .....	Switchman .....	Western Division
B. H. Sanchez .....	Laborer .....	Western Division

(\*) MILEPOSTS regrets having omitted Mr. Tedd's name in the July-August 1963 issue. His seniority date is August 23, 1943.

MILEPOSTS also regrets inadvertently reporting in the May-June issue that Fred J. Saunders, Warehouse Foreman, Western Division (Oakland) as a recipient of a 30-year service pin. His name should have been included with those receiving 35-year service pins.



## OROVILLE

Helen R. Small

Congratulations to Switchman DANIEL L. MARTIN who married Linda Housen on June 14. Services were held in the Palermo Baptist Church with the Reverend Charles Clayton officiating. The new Mrs. Martin is the daughter of Engineer and Mrs. DONALD U. HOUSEN. Linda was given in marriage by her uncle, E. L. Seeger, with whom she made her home. Maid of honor was Charletta Seeger, and bridesmaid was Annette Floyd. Gary



A friendly hug for Linda from husband Daniel

Potes acted as best man and Ronald Reed escorted the bridesmaid. The newlyweds honeymooned on the coast in the Redwood forest area.

Machinist FAY W. RAABE, 42, died suddenly while on a fishing trip to Buck's Lake on May 25. A native of Iron Mountain, Michigan, he had lived in Oroville for 16 years. He is survived by his widow, Mrs. Katherine Raabe; daughter, Kathy; stepson, Marvin Rogers, U. S. Army; stepdaughter, Mrs. Patricia Wallace, Vacaville; father, George Raabe of Prescott, Arizona; and two sisters.

Retired Engineer WALTHER H. BROWN, 67, died in a local hospital on June 14. Funeral services were held in Hamilton and Riley Funeral Chapel, under the auspices of B.P.O.E. Lodge 1897, Oroville, with burial in Memorial Park Cemetery. Walter was born March 27, 1897 in Butte County and was a lifetime resident. He retired in March 1962 after 45 years of service with WP. He is survived by his widow, Mrs. Ruth J. Brown; and a sister, Mrs. Helen Perkins, of Chico.

Mrs. Ethel Dudley, wife of Carman J. N. DUDLEY, passed away in a local hospital on June 24 at the age of 58. Funeral services were under the direction of the Church of Jesus Christ Latter-Day Saints of Oroville, with burial in the Memorial Park Cemetery. She is survived by her husband "Jack"; sons, Bob, of Citrus Heights and Delbert, of Anderson; daughters, Mrs.

# Western Pacific Employees Medical Department ANNUAL REPORT Fiscal Year 1963

## COMPARATIVE STATEMENT OF NET FINANCIAL POSITION AS OF JANUARY 31, 1964 AND JANUARY 31, 1963

ASSETS:	1-31-64	1-31-63	Increase or (Decrease)
Cash on hand:			
Operating funds	\$126,044	\$103,523	\$22,521
Prepaid dues *	54,000	54,000	-
Petty cash - S.F. & Portola	1,525	1,525	-
NET CASH BALANCE	\$181,569	\$159,048	\$22,521
Accounts Receivable:			
Private patients, Portola	26,899	23,768	3,131
Less bad debt reserve	3,922	1,858	2,064
NET VALUE	22,977	21,910	1,067
Value of hospital inventories (est.)**	50,000	50,000	-
Due from W.P.R.R., A.B.L., O.T. and T.S.Ry. for past year's injury-on-duty costs adjustment (net)	7,636	350	7,286
TOTAL CURRENT ASSETS	\$262,182	\$231,308	\$30,874
LIABILITIES:			
Accounts payable - Unpaid bills received after February 1 for services received during fiscal year	\$ 10,066	\$ 16,058	(\$5,992)
Prepaid dues liability *	54,000	54,000	-
TOTAL LIABILITIES	\$ 64,066	\$ 70,058	(\$5,992)
TOTAL NET RESERVE (OR DEFICIT)	\$198,116	\$161,250	\$36,866
TOTAL LIABILITIES AND NET RESERVE	\$262,182	\$231,308	\$30,874

\* This \$54,000 figure represents the approximate average of one month's operating costs of the Medical Department (other than for on-duty injury care) and is accordingly the liability created by action of the Board of Directors in extending benefits one month in advance to all active employee members to establish prepaid dues system February 1, 1958.

\*\* This \$50,000 figure is based on roughly estimated evaluations for fire insurance purposes. It reflects replacement costs of equipment in a similarly "depreciated" or worn condition and normal supply inventory rather than any cash salvage values. Under the railroad's accounting procedures long in effect, the Medical Department has no true capital accounts of book values for equipment and inventory as all such are written off as direct expense at the time of purchase.

COMPARATIVE STATEMENT OF INCOME AND EXPENSE  
1963 AND 1962 FISCAL YEARS \*

INCOME:	1963	1962	Increase or (Decrease)
Dues - Employees & pensioners	\$633,394	\$642,032	
Less payments on old deficit	-	5,225	(\$3,413)
On-duty injury prepayments	39,350	79,361	(40,011)
Portola Hospital			
Private patient revenue	102,817	86,625	15,790
Less bad debt reserve **	2,571	2,169	84,456
Miscellaneous income	4,933	6,172	(1,239)
TOTAL OPERATING INCOME	\$777,923	\$806,796	(\$28,873)
EXPENSES:			
Medical-surgical (doctors' fees, etc.)	\$169,508	\$173,619	(\$4,111)
Private hospital care	277,344	239,420	37,924
Out-patient drugs, X-Ray, laboratory, etc.	59,264	63,588	(4,324)
Dispensary - Sacramento Shops	6,056	6,051	5
Portola Hospital - In-patients	168,963	179,515	(10,552)
" " - Prof. & out-patients	21,052	23,857	(2,805)
General administrative expense	52,726	44,606	8,120
TOTAL OPERATING EXPENSES	\$754,913	\$730,656	\$24,257
NET OPERATING CREDIT OR (DEFICIT) FOR YEAR	\$23,010	\$76,140	(\$53,130)
MED. DEPT. BALANCE - All general funds	\$180,044	\$157,523	\$22,521
PETTY CASH FUNDS - PORTOLA & SAN FRANCISCO	1,525	1,525	-
TOTAL CASH STATUS	\$181,569	\$159,048	\$22,521

\* Fiscal year is based on period of February 1 through January 31 of following year.  
\*\* Portola Hospital income is based on all charges to private patients, less 2 1/2% set aside for bad debt loss. Actual cash collections on accounts during 1963 totalled \$99,757 and a total of \$487 was written off as actual bad debt loss.

CASH FUNDS SUMMARY FOR FISCAL YEAR 1963

MEDICAL DEPARTMENT FUNDS BALANCE, start of year	\$157,523*
EXCESS OF CASH RECEIPTS OVER CASH DISBURSEMENTS, during year	22,521**
MEDICAL DEPARTMENT FUNDS BALANCE, end of year	\$180,044

\* Cash balances represent funds being held by the W.P. Treasury Department and funds transferred to checking account, plus certain working funds at Portola and San Francisco. Such balances do not account for other moneys due to or from the Medical Department, as in net financial position.

\*\* The difference between the "cash excess" shown here and the "net operating credit" shown above for the year is the result of a mixed accounting system, part cash and part accrual.

DETAILS OF 1963 OPERATING INCOME

MEMBERS' DUES:		
Employees (active, furloughed and on leave of absence)	\$539,289*	81.4%
Pensioners	94,105	
Total operating income from dues	\$633,394	
(* Includes amount paid by W.P.R.R.Co. at \$7.58 per month for "non-operating" and evaluated employees.)		
INJURY-ON-DUTY PAYMENTS:		
Prepaid by W.P.R.R.Co. on estimated basis, but including audited adjustment of 1962 balance of W.P.R.R., O.T.Ry., A.B.L. and T.S.Ry.	\$39,350	5.1%
The Medical Department discontinued handling of IOD coverage August 1, 1963. (Actual I.O.D. costs during fiscal 1963 totalled \$46,636)		12.9%
	\$777,923 (100%)	
PORTOLA HOSPITAL - PRIVATE PATIENTS:		
Room & board charges	\$77,695	
Operating room	2,412	
X-Ray rental	1,958	
Drugs & supplies	16,173	
Other charges	4,529	
Total charges	\$102,817	
Less bad debt reserve	2,571	
NET INCOME, PORTOLA	\$100,246	
MISCELLANEOUS INCOME:		
Recovery of costs in third party liability cases, etc.	\$4,933	0.6%

DETAILS OF 1963 OPERATING EXPENSE AND RESERVE

MEDICAL-SURGICAL:			
Fees to doctors	\$166,057		
Nursing (special duty)	774		
Physiotherapy & misc.	2,677	\$169,508	21.8%
PRIVATE HOSPITALS:			
Room and board	\$162,122		
Operating room	25,057		
X-Ray, drugs & lab.	88,417		35.7%
Physiotherapy & misc.	1,248	\$277,344	
OUT-PATIENT MEDICAL COSTS:			
Drugs & appliances	\$2,803		7.6%
X-Ray, lab. & ambulance	36,681		
Reimbursements for non-staff care	19,780	\$59,264	6.7%
GENERAL ADMINISTRATION:			
Payroll (Chief Surgeon, Manager & clerical)	\$39,116		8%
Rent, tel. & supplies	4,508		
Payroll taxes	3,393		
All other	5,709	\$52,726	24.4%
SACRAMENTO SHOPS DISPENSARY:			
Payroll, drugs & misc.	\$6,056		3.0%
RESERVES (for outstanding claims & future needs)	\$23,010	\$777,923 (100%)	
PORTOLA HOSPITAL EXPENSES:			
OUT-PATIENT CLINIC:			
Doctors' payroll	\$13,680		
Drugs, X-Ray & lab.	5,193		
Laundry & all other	2,172	\$21,052	
IN-PATIENT COSTS:			
Medical-surgical:			
Nurses & aides payroll	\$64,215		
Drugs, X-Ray, & lab.	10,269		
Miscellaneous	2,974	\$77,458	
Dietary:			
Kitchen payroll	\$19,932		
Food, fuel & eqpt.	12,846	\$32,778	
Housekeeping:			
Janitor payroll	\$9,820		
Supplies, laundry, linen	4,248	\$16,054	
Hospital Administration:			
Adminis. payroll & health ins. premiums	\$19,864		
Rent and telephone	3,617		
Insurance & taxes, payroll and sales	15,659		
Supplies, fuel, repairs	3,533	\$42,673	
TOTAL PORTOLA EXPENSE		\$190,015	

COMPARATIVE STATEMENT OF MEDICAL SERVICE BENEFITS EXTENDED TO MEMBERS

	1963	1962	Increase or (Decrease)
Average number of employee members	3,595	3,655	(61)
" " " pensioner "	627	625	2
Number of injury, medical or surgical cases treated	6,798	5,473	1,325
Number of cases hospitalized:			
At private hospitals	753	552	201
At Portola Hospital	154	118	36
Days of hospital care provided			
At private hospitals	6,045	5,226	819
At Portola Hospital	2,789	3,203	(414)
Days of T.B. sanitarium care	130	150	(20)
No. of home & office visits by staff doctors	18,780	21,221	(2,441)
No. of hospital visits by staff doctors	9,067	9,838	(771)
No. of visits at Sacramento Shops Dispensary	1,281	1,416	(135)
No. of orders under partial optical device benefit	231	233	(2)
Retail value of such orders	\$7,021	\$7,534	(\$513)
Total savings to members	\$2,524	\$2,754	(\$230)
Total cost to Medical Department	\$558	\$555	\$3
PENSIONER BENEFITS:			
Dues income from pensioners	\$94,105	\$93,673	\$432
Total cost of benefits for pensioners	\$195,855	\$181,680	\$14,175
Ratio of benefits per \$1.00 of dues	\$2.08	\$1.94	.14
Additional dues cost per active member per year to subsidize pensioner benefits	\$28.30	\$24.07	\$4.23

PARTIAL REIMBURSEMENT FOR NON-STAFF CARE UNDER RULE 11

	1963	1962	Increase or (Decrease)
Number of claims	296	219	77
Total reimbursed	\$19,780	\$19,430	\$350
Average per claim	\$66.82	\$88.72	(\$21.90)



COMPARATIVE RECORD OF HOSPITALIZATION AND AVERAGE DAILY COST 1963 AND 1962

AREA AND HOSPITALS: (General Hospitals)	No. of Patient Days		Total Costs		Average cost per Patient Day	
	1963	1962	1963	1962	1963	1962
<b>San Francisco Bay Area (sub-total)</b>	<b>3,402</b>	<b>2,564</b>	<b>\$177,311</b>	<b>\$122,706</b>	<b>\$52.01</b>	<b>\$47.86</b>
St. Joseph's Hospital (S.F.)	2,643	2,024	142,690	95,325	53.99	47.10
Providence (Oakland)	345	326	13,212	13,926	38.30	42.72
Oakland (Oakland)	299	121	13,792	5,795	46.13	47.89
All other (San Francisco, Alameda, Oakland, San Jose, Hayward)	122	93	7,617	7,660	62.43	82.37
<b>Sacramento Valley (sub-total)</b>	<b>1,832</b>	<b>1,610</b>	<b>\$76,646</b>	<b>\$73,431</b>	<b>\$41.84</b>	<b>\$45.61</b>
St. Joseph's (Stockton)	368	348	13,649	14,992	37.09	43.08
Dameron (Stockton)	147	79	4,500	2,324	30.61	29.42
Mercy (Sacramento)	147	178	6,903	8,452	46.96	47.48
Sutter (Sacramento)	310	349	16,173	16,758	52.17	48.02
Oroville-Community (Oroville)	150	163	6,509	8,121	43.39	49.82
Medical Center (Oroville)	624	380	25,809	18,446	41.36	48.54
All other	86	113	3,103	4,338	36.08	38.39
<b>Sierra Mountains (sub-total)</b>	<b>254</b>	<b>361</b>	<b>\$11,019</b>	<b>\$12,195</b>	<b>\$43.38</b>	<b>\$33.78</b>
Plumas District (Quincy)	178	323	6,869	10,350	38.59	32.04
Washoe & St. Mary's (Reno)	60	21	3,246	959	54.10	45.67
All other	16	17	904	886	56.50	52.12
<b>Nevada-Utah (sub-total)</b>	<b>550</b>	<b>691</b>	<b>\$17,642</b>	<b>\$22,746</b>	<b>\$32.08</b>	<b>\$32.92</b>
Humboldt (Winnemucca)	161	77	4,343	1,930	26.98	25.06
Elko (Elko)	193	483	6,927	16,328	35.89	33.81
St. Mark's (Salt Lake City)	129	102	3,966	3,622	30.74	35.51
All other	67	29	2,406	866	35.91	29.86
Total, Other than Portola	6,045	5,226	\$202,618	\$231,078	\$46.75	\$44.22
Portola Hospital (W.P. patients)	2,789	3,203	77,615	105,705	\$27.83	\$33.00
<b>GRAND TOTAL, GENERAL HOSPITALS</b>	<b>8,834</b>	<b>8,429</b>	<b>\$360,233</b>	<b>\$336,783</b>	<b>\$40.77</b>	<b>\$39.96</b>
T.B. Sanitarium Care	130	150	\$2,513	\$2,586	\$19.33	\$17.24

FOOTNOTE: The year 1963 brought about another round of general increases in basic hospital rates. In the patient-day average column, some hospitals show a disproportionately large increase while others show an actual decrease in the over all rate average. This occurs because of the nature of utilization (services other than basic accommodation) as well as the extent. Hospitals listed as "All other" are usually located in outlying districts and are primarily used in emergencies (auto accidents etc.). The care provided is usually of a more extensive and intensive nature and the average costs may be much higher even though the basic daily rate may be lower.

Area	Average Cost per Patient Day 1963	Average Cost per Patient Day 1955	% of Increase
Private Hospitals: S.F. Bay Area	\$52.01	\$27.60	88.4%
Sacramento Valley	41.84	26.87	55.7%
Sierra Mountains	43.38	21.41	103.0%
Nevada-Utah	32.08	18.14	76.8%
Total, other than Portola	46.75	25.57	82.8%
Portola Hospital (W.P. patients Net Cost)	27.83	23.83	16.8%

CONDENSED SUMMARY OF PORTOLA HOSPITAL OPERATING RESULTS

	January 1964	January 1963	Increase or (Decrease)
Chgs. to private patients (less bad debt reserve)	91,348	73,810	17,538
Value of services to members	79,030	80,233	(2,203)
Total value of services	169,378	154,043	15,335
Total costs	163,963	179,515	(10,552)
Net total credit or loss to Medical Dept.	11,519	(15,797)	27,316
Total in-patient days care	6,096	6,011	85
Average cost per in-patient day	27.72	29.86	(2.14)
Average charge per private patient day	27.62	25.73	1.89
Average net cost per W.P. patient day	27.83	33.00	(5.17)

NOTE: Figures as of end of fiscal year

Rozella Phillips, Oroville, and Mrs. Patricia Mattos of Biggs; and 10 grandchildren.

LINDA GROSS is substituting for HELEN R. SMALL in the trainmaster's office during Helen's vacation in the Black Hills, South Dakota, Minnesota and Iowa.

WINNEMUCCA

Ruth G. Smith

Brakeman and Mrs. ROBERT MORTON are the parents of a son, born June 28 in the Humboldt County General Hospital. He is their fourth child.

Fireman and Mrs. RICHARD RUSSELL are the parents of a daughter, born July 12 in Winnemucca.

It is a first grandchild for Engineer and Mrs. FRED ELWELL. Mr. and Mrs. Douglas C. Hiles, Crown Point, Indiana, are the parents of a son. Mrs. Hiles is the former Kathleen Elwell.

Furloughed Clerk VERNA YEAGER and her husband, Farris, have become grandparents for the third time with the arrival on July 8 of a granddaughter, whose parents are Mr. and Mrs. James L. Yeager of Salt Lake City.

Telegrapher MARY N. EVANS retired July 15 after nearly 46 years of employment with Western Pacific. She first worked for WP on October 15, 1918 at Carlin, Nevada. She held many jobs on the extra board until October, 1923, when she was married to Telegrapher OLIVER W. EVANS. They went to Jungo, Nevada and worked there together from 1923 until 1951. Mary was agent at Jungo beginning in 1928. When that station was closed in December, 1951, Mary and "Ollie" came to Winnemucca. Mary was on the relief job and "Ollie" is still on the second shift.

KEDDIE

Elsie Hagen

Mrs. Alice Bashford, wife of the late Engineer HAROLD BASHFORD, died on July 16 from a heart attack in Plumas District Hospital. Alice had been working in the Plumas County Assessor's Office since the death of her husband. She is survived by three daughters, Mrs. Georgia Klehm, Paradise; Mrs. Berniece Mazzini, Lakehead, and Mrs. Bessie Pepin, Alameda.

Train Desk Clerk ROY BARKSTROM died on July 12 from a heart attack. He had been a Western Pacific employee for over 20 years and had also worked as roadmaster's clerk. He is survived by his wife, Lucille, and a stepson, William Ginter, of Sacramento, and two grandchildren. Burial was in Quincy Cemetery.

Janet Marie Johnson, daughter of retired Gang Foreman TOM JOHNSON, and Arthur Du Wayne Crowe of Sacramento were married in the Methodist Church in Quincy. After a honeymoon at Lake Tahoe they are living in Sacramento.

Roundhouse Foreman RALPH L. SHEPARD and Marian E. Ghidosi were married in Reno on June 7. It is reported that they intend to live in Oroville.

Gale and Mike Leavy, daughter and son of Roundhouse Foreman BILL LEAVY, spent a vacation visiting in North Dakota with their paternal grandparents. While they were away their parents spent a week fishing at Buck's Lake.

Keddies' softball team, the "Railbirds," have been winning many games among their league of other local teams and from Chester. All members are WP engineers, firemen and trainmen.

Not to be outdone in the winner's circle are the Women's City Tournament Champions, the "Boyd Market Bowlers." Trophies were awarded the members of the team which includes Thelma Strang, wife of Trainman MEL STRANG.

Mrs. Jessie Thompson and Warren Junge of Meadow Valley were married in Reno on June 27 in the Parks Chapel. Jessie is the mother of GORDON THOMPSON, brakeman, now in the U. S. Air Force stationed in New Jersey. After a short trip to the Monterey Peninsula they are living in Meadow Valley.

Retired Road Foreman and Mrs. ROBERT McILVEEN returned to Keddie after living in Alameda for a short while. The McIlveens, so accustomed to the quietude of this area, were unhappy with all the noise and commotion of "big city" life.

Rosemary Leavy, wife of Roundhouse Foreman BILL LEAVY, has graduated from the Nurses Aid Class sponsored by Plumias District.

JESS CURRIER, road foreman of engines, has moved to Quincy into a new home in the Bellamy tract.

## STOCKTON

Elaine Obenshain

Miss Joan Frances Cooper and Switchman LEONARD JOHN CARDOZA were married on June 7 in the First Methodist Church, Tracy. After honeymooning in Hawaii they are now living in Tracy.

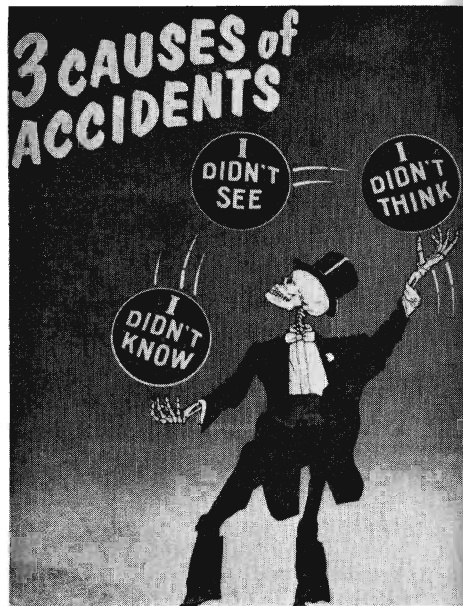
Lyle J. Cooper, son of Switchman and Mrs. S. W. COOPER, has been released from the Marine Corps after serving four years, two of which were spent in Hawaii at the Helicopter Division Air Facilities on Oahu. Lyle is

now employed by the U. S. Forest Service near Sonora.

Our deepest sympathy to the family of retired Switchman DeLONG V. DUNCAN who died on July 10 just ten days following the death of his wife, Tressa. Also, our sympathy to Carman C. E. FISHER whose wife passed away recently.

Funeral services for Telegrapher LAWRENCE E. ANDERSON were held in Stockton on July 15. Larry was killed in an auto accident south of Stockton on July 11. Burial was at Golden Gate Cemetery, San Bruno. Our deepest sympathy to his parents, Terminal Trainmaster and Mrs. A. E. STENE and his brother and sisters.

Brakeman and Mrs. D. V. BLAGG are the proud parents of James Allen, born July 2. Welcoming the new arrival are



MILEPOSTS

brothers, Dennis, 9, Jeffery, 3½, and sister Brenda, age 2.

Clerk and Mrs. E. H. BRANAUGH welcomed their first son on the 4th of July. The new arrival, named Jay Everett, joined sister Mary Elaine in the family home in Manteca.

Miss Lynn Marie Adams and Switchman DAVID EDWARD ATKINSON were married in Reno on June 13. David is the son of Engineer and Mrs. H. D. ATKINSON of Keddie, and brother of Switchman G. G. ATKINSON and Mrs. K. E. Niemeyer of Stockton. A post-nuptial reception honoring the newlyweds was held in the home of Lynn's mother, Mrs. Louis Robert Adams, on June 28. The new Mrs. Atkinson, a native Stocktonian and a fourth generation Californian, is attending Delta College and is employed part-time at Jo French's Beauty Salon. The young couple will live in Stockton.

Retired Switchman EDWARD THOMAS stopped by the yard office for a brief visit recently and we're happy to report he is looking well. Mr. and Mrs. Thomas live in Kansas City, Missouri.

Star Scout Michael Prentiss, son of Conductor O. K. and Clerk VELMA PRENTISS, attended the Boy Scouts of America Jamboree at Valley Forge. He left Stockton with 137 other Scouts and Leaders via turboprop jet on July 7. They spent four days in New York City enjoying tours and the World's Fair; two days in Washington, D. C., visiting the White House, Capitol Building, Alexandria, Virginia, Mt. Vernon, Arlington Cemetery and other historic sites; and one day in Philadelphia before arriving at Valley Forge on July 16. On July 22 they were addressed by President Johnson and left Philadelphia the next day for Stockton.

Miss Dorothy Colleen Vance and Switchman GERALD G. ATKINSON, son of Engineer and Mrs. H. D. ATKINSON of Keddie, were married August 1 in the Church of Jesus Christ of Latter Day Saints, Stockton. A reception, following the ceremony, was held in the Ed Steward Memorial Building. The young couple will make their home in Stockton, where Colleen is employed by the San Joaquin County Sheriff's office. "Jerry" is the brother of Switchman D. E. ATKINSON, and Mrs. K. E. Niemeyer.

Clerk and Mrs. O. J. FARMER are the proud parents of their first daughter, Kimberley Carol, born July 24. Brother Blaine keeps the family from being outnumbered by the female sex.

## ELKO

Theda Mueller

Mr. and Mrs. Bill Sutherland announced the birth of a son, Kevin John, at Mercy Hospital, Sacramento, on July 4. Mrs. Sutherland is the former Janice Thorpe, daughter of Timekeeper ALLAN THORPE and a sister of Brakeman RONALD THORPE. Janice's mother spent a week in Sacramento getting acquainted with her new grandson.

Section Foreman J. G. WRIGHT was guest of honor at a dinner party in July honoring his retirement. A large number of relatives and friends attended the affair at Ranchinn. George was employed by WP since 1927. He and Mrs. Wright reared a large family of which they can be very proud, and the Wright name will continue on the Western Pacific for years to come. Mr. Wright was presented with a sizable cashier's check representing

the high esteem in which he was held by his fellow employees.

Superintendent and Mrs. JAMES F. LYNCH have returned home from a three-week train trip east. They visited a son and family, U. S. Navy Lt. Commander and Mrs. Robert Lynch at Falls Church, Virginia, and stopped over in New York City to attend the World's Fair.

The wedding of Candace Rae Wiley and Clarence Albert Jones took place in St. Paul's Episcopal Church in Elko at 7:00 p.m. on June 13. Candace is the daughter of Switchman and Mrs. W. A. WILEY, and Clarence is the son of Machinist and Mrs. RULEN JONES. After the ceremony a reception was held in the church parish hall where the bride and groom greeted guests and cut a beautiful four-tiered wedding cake topped with a miniature bridal couple and trimmed with small nosegays of daisies. Their honeymoon was spent at



Candace and Clarence cut slice in wedding cake

Yellowstone National Park. They will live at Owyhee, where Mr. Jones teaches English in the high school. Candace comes from a "railroad family" as her grandfather is Conductor R. J. SMITH at Winnemucca and her uncle is retired Engineer A. N. LAMBERT, Portola. Her great-grandfather was a carman at Elko in the 1930's. Even her mother, CORIENE WILEY, was once employed by WP as stenographer at Elko and Winnemucca.

George Duncan, husband of PBX Operator "SCOTTY" DUNCAN, died in Elko General Hospital following surgery July 17. George was retired from the Post Office where he had been employed for many years. Our deepest sympathy to this family.

FRANK WYTRAL, personal record and accident clerk, returned from a three-week vacation spent with his family in Chicago.

C. A. "BUD" JONES, Sacramento Northern track supervisor, and his wife were house guests of Extra Gang Foreman CURTIS JONES and Steno-Clerk DIANA JONES during part of a three-week vacation spent touring through Canada and the Northwest.

JOHNNY and HANNAH ETCHEBEHERE and daughter, Michele, spent a week's vacation in Elko renewing acquaintances and visiting with Johnny's mother and sister. Both once worked in the superintendent's office at Elko prior to Johnny's promotion to San Francisco. They now live in San Rafael.

Janice Dore, daughter of Agent R. A. DORE, is again working in the superintendent's office during vacation. She will begin her second year at University of Nevada this coming September.

## SACRAMENTO STORE

Irene E. Burton

Hazel Evers, daughter of EDWARD E. EVERS, was presented with a proclamation commemorating her outstanding volunteer service record with the Sutter Hospital Auxiliary, which totaled 1,000 hours. Hazel is the outgoing of the Auxiliary's Candy Strippers, and was graduated in July as a medical technician.

Mary Elizabeth Lee, granddaughter of JAMES LEE, SR. and Jerry Grose were married recently in St. Luke's American Lutheran Church. The newlyweds are living in Sacramento.

We are happy to have back at work EDWARD HAWKINS after hospitalization for a couple of days due to a fall.

We all wish an early recovery for

MARTIN COUGHLIN, retired. "MART" has been hospitalized for about two weeks and is eagerly looking forward to returning home.



Henry "Red" Madison, manager of stores, holds 40-year Service Pin received from Al Kasper, manager purchases and stores, center, and witnessed by Storekeeper N. Poncioni. The cake, decorated with train and tunnel, was generously shared by "Red" with his office staff at Sacramento.

### It's A Fact!

Suppose that we could compress the total world population into a town of 1,000 people. In this town there would be 60 Americans and the remainder of the world would be represented by 940 persons. The 60 Americans would receive half the income of the town and would produce 16 per cent of the total food; would eat 72 per cent of the food! The Americans would have an average life expectancy of 70

years while the other 940 would average less than 40 years. The 60 Americans would have 15 times as many possessions per person as the rest of the people.

Free enterprise has done this for the American people.

\* \* \*

Just about everyone's looking for a Government handout—Uncle Sam's hand out of their pockets, that is.

## WENDOVER-SALT LAKE CITY

Esther Witt  
J. B. Price

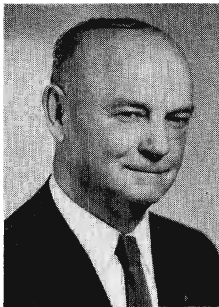
We're glad to have Conductor LAMAR PORTER back at work again after a hurried trip from Wendover to Salt Lake to enter St. Mark's Hospital for an appendectomy. We hope that good health will now be his.

Conductor SAMUEL L. WAGSTAFF, although having submitted to back surgery has not been allowed to return to work. He has been off since November and we understand that he is anxious to be in the swing of things again.

Conductor and Mrs. JOSEPH C. PARKER announced the marriage of their son, Jerry Joseph, to Miss Marilyn Lee Redden at Crestwood Villa in Salt Lake City on June 1. The parents of the bride are Mr. and Mrs. Phillip D. Redden. Following their wedding trip the newlyweds are living in Bountiful. Jerry graduated this spring from the University of Utah College of Pharmacy. We extend them congratulations and best wishes for a long life of wedded bliss.

Lowell Anderson, son of Water Service Maintainer and Mrs. VARIAN ANDERSON, has returned to the States after two and one-half years' service in the Swedish Mission for the L.D.S. Church. Homecoming in his honor was held on June 25. Lowell has enrolled for summer school at B.Y.U.

Many happy years of retirement were wished Conductor JOSEPH E. SMALLES as he made his last trip on June 26. Though we will miss him from our ranks we know he has earned these years of retirement which we hope will be many.



Retired Engineer GEORGE A. LORENZ was honored on his 85th birthday anniversary on June 20 at an open house at his home, 164 Kelsey Avenue. George was born in West Germany on June 20, 1879. Before joining Western Pacific in 1910 he was a member of the Salt Lake City fire department. He served Western Pacific faithfully and well until his retirement in 1945. He is a great baseball fan and an avid booster for the Salt Lake Bees and he misses very few home-town games. We sincerely hope that George will be around to celebrate many more happy birthdays with us.



During the latter part of May, Yard Clerk and Mrs. PRESTON A. NUFFER were at Provo to attend the graduation exercises of their daughter, Linda Jean. Linda graduated from B.Y.U. College of Humanities and Social Sciences with a B.A. degree, having majored in sociology. Baccalaureate was on May 28 and commencement exercises were on May 29. The parents were honored at a breakfast and given a tour of the

campus. Congratulations, Linda, you are wished much success in life.

We were glad to have as recent visitors, retired Engineer GEORGE A. LORENZ and retired Conductor O. JAMES CROWE. Both are enjoying their retirement, and we hope they come to see us again soon.

Corrine Anderson, daughter of Water Service Maintainer and Mrs. VARIAN ANDERSON, was selected to take part in the "Hill Cumorah Pageant" at Palmyra, New York. Presentation of the pageant started on July 23 and continued for seven nights.

Sincerest sympathy is extended to the family of retired Conductor CHARLES G. C. MYERS who passed away in a Salt Lake City hospital at the age of 80 years.

Happy parents for the first time are Conductor H. BRUCE and former stenographer-clerk RUTH WELSH. Sheila Lorraine arrived at the L.D.S. Hospital in Salt Lake City on June 27, and we extend our congratulations to the happy family.

## OAKLAND

John V. Leland

We were a bit overenthusiastic when we reported in the last issue that SAM RAZZO had been promoted to position as claim adjuster for the freight claim department. Sam, too, was embarrassed and was the first one to call me that his new title is freight claim inspector. I apologize for not having checked better the information as given to me, but at any rate Sam got his promotion and that's most important.

Marine Oiler TURNER G. WINTON retired after 24½ years with WP. His last watch on August 2 was aboard the MV *Las Plumas* and now at the

age of 62 he expects to be "watching" some real estate he and his wife, Bonnie, own to make sure that it, too, is ship shape. "Bonnie also has a long list of other projects scheduled for me—or so she thinks, anyway," commented Turner. He began his WP employment on August 17, 1921, as cabin boy and water tender on the passenger ferry *Edward T. Jeffery*. He broke in as fireman during vacation relief and then served aboard the tugboats *Virgil G. Bogue*, *Hercules* and *Humaconna*. He left the steamboat vessels in 1957 and apprehensively boarded the diesel-powered *Las Plumas*.

Our sympathy to the family of JAMES CHISHOLM, retired diningcar waiter, who died on July 14.

We also extend our sympathy to the family of Scale Inspector EDWARD D. MURPHY who died on July 13.

We were also saddened by the loss of Terminal Trainmaster ANDY STENE's stepson, Telegrapher LAWRENCE E. ANDERSON, who was killed in an auto accident south of Stockton on July 11.

We have word from Mrs. Mary Parker, 836 West Rose Street, Stockton, daughter of retired Conductor ADAM C. BROWN, that Mr. Brown passed away on July 27. We understand also that Mr. Brown sustained a broken hip on June 18. He entered WP service in 1926 as a brakeman at Portola and was promoted in 1931. He was born in Salt Lake City in 1881 and his father was a conductor on the Utah Central and a charter member of O.R.C. No. 395. Adam made his last passenger run between Oroville and Portola on May 30, 1946. He had just visited with us by telephone on June 2.

Former Assistant Terminal Train-

master CHARLES R. DOWNS, who retired on disability January 22, 1949, died on July 28. He began his service as a switchman at Stockton in September, 1920, became yardmaster at Oakland in August, 1928, and was appointed assistant terminal trainmaster at Oakland on February 13, 1942. He was 75 years of age and lived with a daughter. Our condolences to the Downs family.

Congratulations to JOHN KAFFUN, senior sales representative at Oakland, who was elected an officer of a businessman's social group of the Oakland Chamber of Commerce Trade Club. His new title is "drive trader." If you think that title is misleading, the officer second in command of the organization is known as "Vice Trader"!

## CHICAGO

Don J. Landgraf

We had quite an occasion in this office recently when our genial District Sales Manager GEORGE K. WENIG was

presented with his 35-year Service Pin. To make it official, the presentation was made by WALTER C. BRUNBERG, vice president-marketing, here from San Francisco, and KENNETH A. RANK, our general sales manager.

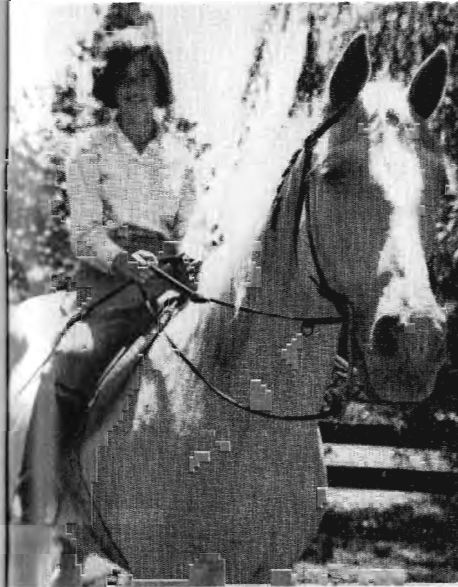
George was born in Chicago on September 10, 1910. He is still a bachelor and lives on the city's north side. He is a graduate of Austin High School and LaSalle Extension University's resident night school higher accounting course. He also attended Bryant & Stratton Business College. His service with Western Pacific began as a messenger-stenographer-clerk on May 15, 1929 followed by other clerical positions for six years. In 1935 he was promoted to freight and passenger traffic representative covering Chicago's south side. In 1941 he was made chief clerk and in 1951 was promoted to general agent in charge of Chicago territory which title since has been changed to district salesmanager.

Our congratulations to George on his long service!

Before they would give George his 35-year service pin, he had to pose for this picture with (left-right) W. C. Brunberg; Bill Cook; Ken Rank; Marie Shipley; Don Landgraf; George in person; Marge Noetzel; Jack Baquist; Kathy Marlas; Fred Sweeney; and Carol Callan, all of Chicago office.



MILEPOSTS



Ready for another ride are Nan and "Woody."

## SACRAMENTO SHOPS

Marge Hammett

Handsome companions, Nan Nichols and her registered Arabian "Woodin" spend a lot of time together. Nan, the 13-year-old daughter of Secretary CLARA NICHOLS, is an avid lover of horses. Besides "Woody," twice-winner of the sulky races at the Sacramento State Fair Horse Show in 1962, she is also the proud owner of a 3-year-old Palermo which she is presently training.

### Probably sleeps in

"This expense account is fantastic!", the boss said to a salesman. "How do you manage to spend \$18 a day for food?"

"I manage," replied the salesman, "by skipping breakfast."

## SAN FRANCISCO

George Bowers, Doug Bruce, Jean Bruce, Elizabeth Fagan, Lawrence Gerring, Carl Rath, Frank Tufo

After traveling extensively before coming to work for Western Pacific, GABRIELLE MAHER, of Dublin, Eire, has decided to settle in San Francisco. For a while, anyway! This accounting department "redhead," while once starting her way back to Europe to work as a secretary with UNESCO in Paris, met an engineer, Klaus Schlemminger from Berlin, who persuaded Gabrielle to stay a while. She did, and they were married on April 4 at the little French church, Notre Dame des Victoires, in San Francisco. They now live on San Francisco's world-famed crooked street, Lombard. Klaus a traveler, too, says that now when Gabrielle feels the urge to up and go she'll have to take him along, too. Gabrielle, who golfed frequently while in Hong Kong, is working hard on week ends trying to reduce her 18 handicap.

SANDRA MARCHESE, accounting department, and Tim Cadigan were married on February 8 in Sacred Heart Catholic Church. Many of their friends were present at the 12:00 noon nuptial mass to watch Sandra come down the aisle in a white velvet wedding dress and her attendants in red. A buffet luncheon at the San Jose Women's Club followed the wedding, after which the newlyweds left for a honeymoon at Lake Tahoe. Tim is a member of the San Francisco police force and they live in Park Merced.

Congratulations were extended on July 27 when ANN SCHEEHAN of payroll accounts walked in displaying an engagement ring. The fortunate man

is Paul Della Santina, both of San Anselmo. No date has been announced for the wedding.

ELMER H. CARLETON, assistant chief special agent and claim agent, returned to the office in July after being hospitalized for a back ailment. "You'll never know how good it feels to be able to stand up straight without a pain in the back," said Elmer, who looks the picture of good health.

It was good, too, to see HERBERT W. SPENCER, sales representative, back at work at least part time, following a coronary in May.

The marketing division is also happy to have back Freight Pricing Manager L. "BY" LARSON who was flown home from Portland, Oregon and entered St. Joseph's Hospital in July with a pinched nerve in one of his arms.

Another patient in St. Joseph's is Assistant Engineer LEONARD E. LELEVICH who is suffering with back trouble and was placed in traction during July. He had been working out of headquarters in Oroville.

DONALD J. STEVENS, marketing division rate clerk, was voted "Most Improved Speaker" at a 49'er Toastmaster Club affair in San Francisco during July. The title was a repeat for Don as he was voted the trophy also in the month of May. Custody of the trophy is only temporary until a speaker on the following week's program is voted the award. Don has been a member only since April 1 and made his first talk on April 22. His second talk, "The Stampede Toward Mediocrity," won his award on May 27, and "The Republican Campaign" got him the award on July 8. He has been with WP for 12 years, first in the passenger department and now works on PSFB proposals and

rates California to Utah, Nevada and other points.

MARION NESBITT, affectionately known as "Sam," retired July 31 after 22 years and three months service. A luncheon in her honor was given at Henry's Fashion Restaurant and her many friends throughout the general office were present for coffee and cookies on the afternoon of her retire-



Nick Schoeplein, auditor of revenues, and Vern Geddes, assistant auditor, wait for presentation of retirement gift to Marion from Jim Drury, chief clerk car record bureau.

ment. Many of Marion's friends, including some who are enjoying retirement, attended to extend their best wishes. Marion spent most of her years in the car records department and it was fitting that her retirement gift was symbolized by a miniature train complete with a pass book of cash.

Our sincere sympathy to Mrs. ANN RANNEY, whose son, Russell, passed away on July 31 after a long siege of heart trouble.

Our sincere sympathy also to MARY FARR and ANN SHEEHAN, whose father passed away during August.

GEORGE WELCH, assistant auditor of

(Continued on Page 23)



In behalf of all employees of Western Pacific and its affiliated companies, MILEPOSTS extends sincerest sympathy to the loved ones of the following employees whose deaths have been reported:

Lawrence E. Anderson, telegrapher, July 11.

Roy Barkstrom, clerk, July 12.

Frederick O. Bennett, retired freight claim adjuster, May 1964.

Adam C. Brown, retired conductor, July 27.

Natividad O. Cabral, track laborer, July 21.

Maurice D. Castle, retired electrician, June 1964.

James F. Chisholm, retired waiter, July 14.

Charles Downs, retired assistant terminal trainmaster, July 28.

Delong V. Duncan, retired yardmaster, July 10.

Visente Espinosa, retired shop laborer, June 30.

Claire C. Johnson, retired Sacramento Northern lineman, June 1964.

Jesse T. Knoles, retired locomotive engineer, May 1964.

Valentine Krulic, retired bridge & building miner, April 1964.

Pierre Mondine, retired machinist, June 1964.

Edward E. Munson, retired assistant to superintendent of dining cars, July 29.

Edward D. Murphy, scale inspector, July 13.

Charles Myers, retired conductor, July 19.

Ben F. Noah, yardmaster, August 8. Robert A. Pfeiffer, machine operator, San Francisco, August 18.

Milton L. Poff, retired Sacramento Northern electrician, May 1964.

Inasie O. Ramirez, track laborer, July 21.

Emiliano G. Valadez, track laborer, July 21.

Alexander Valentine, retired assistant station master, May 1964.

Fred C. Van Natta, retired brakeman, August 8.

James H. Wright, retired boilermaker helper, June 1964.

### Caboosing . . .

(Continued from Page 22)

revenues, with his wife and her father, recently sailed for Hawaii on the *Lur-line* for a two weeks' vacation.

VEDAT SUER, rate & division clerk, announce birth of twin sons, John Vedat and James Omer on August 26, weighing 5 lbs. 8 oz. and 5 lbs. 13 oz. The twins were welcomed by sister, Nil, and brother, Omer.

### New R.R.B. District Office

For the information of Western Pacific employees in the San Francisco bay area, the District Office of the Railroad Retirement Board is now located in Room 1425 on the ground floor of the new Federal office building at 450 Golden Gate Avenue, San Francisco.

## WESTERN PACIFIC MILEPOSTS

526 Mission Street  
San Francisco, Calif. 94105

Return Requested  
EMP

MARVIN T. MAYNARD  
4164 STANFORD WAY  
LIVERMORE, CALIF.

Bulk Rate  
U.S. POSTAGE  
**PAID**

San Francisco, Calif.  
Permit No. 5371

## RAILROAD LINES



Missouri Pacific believed to be first railroad west of Mississippi to install complete photocopy billing system and first major railroad to have centralized billing and accounting office covering entire operation in 12 states.

\* \* \*

New York Central has issued 36-page brochure "Man, Mind and Material" describing work and accomplishments of its subsidiary research organization such as first atomic-powered switch lantern, first rail movement of a polaris missile, first use of radioactivity to inspect rail ties.

\* \* \*

Frisco has filed application with ICC for authority to build estimated \$5 million 41-mile line to serve Missouri mining area taking off from Salem branch at Keysville.

\* \* \*

Nickel Plate has hauled over 300,000 trailers since its piggyback service was inaugurated 10 years ago.

\* \* \*

Atlantic Coast Line has in service the first General Motors six-axle, six-motor, 2,500-h.p. SD-35 locomotives.

\* \* \*

During first nine days after opening on July 2, some 15,000 visitors viewed displays in Baltimore & Ohio's transportation museum in Baltimore, closed since 1958.

\* \* \*

Russia's Oktyabrskaya railway is reportedly working toward operation of trains at 125 or more mph. Regular runs already reach 100 mph.