

- FRRS Membership -

Yearly Dues

Associate \$20.00
 Active \$40.00
 Family \$60.00
 Sustaining \$100.00

Single Life Membership

Birth-17 years of age \$1200.00
 Age 18-39 \$900.00
 Age 40-61 \$600.00
 Age 62 and above \$300.00

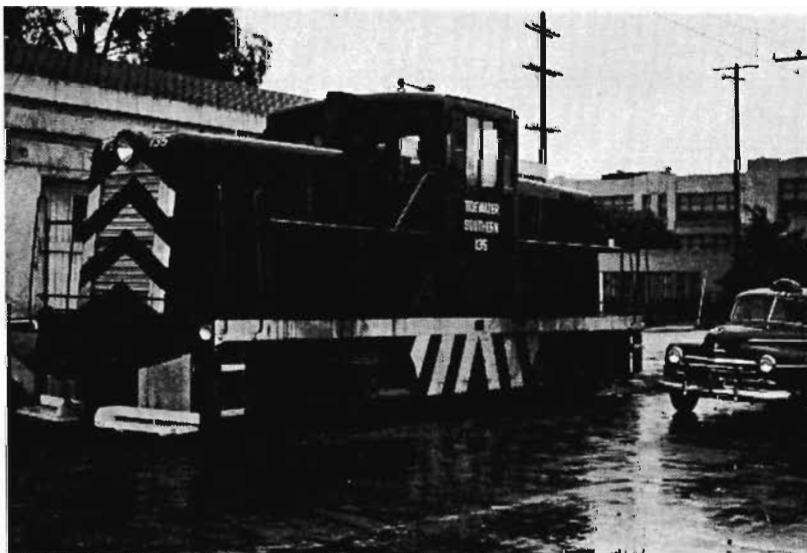
Family Life Membership

Birth-17 years of age \$1800.00
 Age 18-39 \$1350.00
 Age 40-61 \$900.00
 Age 62 and above \$450.00

These are the dues for the duration of one year, with Life and Family Life being a one-time payment.
 Five year payment plans are available for life memberships.

Associate memberships do not have a vote, receive The Train Sheet but not the Headlight and are for one person only.
Active memberships receive both The Train Sheet and the Headlight, have voting rights and are for one person only.
Family memberships receive both The Train Sheet and the Headlight, have one vote and include all members of ones immediate family.
Sustaining memberships receive both The Train Sheet and Headlight, maximum of two persons with one vote each.
Life memberships receive both The Train Sheet and Headlight, have voting rights and are for one person only for life.
Family Life memberships receive both The Train Sheet and the Headlight, are for a maximum of two people and have two votes (one per member) for life.

Send all applications, renewals and address changes to:
 Feather River Rail Society - Membership Dept. - P.O. Box 608 - Portola, CA 96122-0608
 Address changes may also be sent to membership@wplives.org



From the Archives

Tidewater Southern's first diesel, GE 44-tonner 135, was captured by Carl Allen Walker resting in Pittsburg, California on sister road Sacramento Northern. Its a rainy May day in 1948. TS 135 is only months old at this point. The TS and SN often loaned the other power, starting from the earliest days of each road.

- photo by Carl Allen Walker, May 30, 1948

Mission Statement

"The Feather River Rail Society is dedicated to the preservation, interpretation and education of the public, as to the history and people of the Western Pacific Railroad."

Mission Goals

To preserve and interpret the history of the WP, the "Willing People" as a vital link in the development of the rail industry on the West Coast, including the steam and diesel evolution, WP's influence in the passenger tourism industry, the impact of freight competition between neighboring railroads. WP's influence in the lumber, mining and agriculture industry from Plumas County throughout California, Nevada and Utah.