

**MEMBERSHIP**

Please note the interesting stamp on this mailing. We used a few on the last issue, but then was informed we could not use them because of the words Bulk Rate. After further consultation we now have an OK.

A bulk rate (11¢) per piece would be available if we could mail 200 items at one time. Since we mail less than 100, there would be no advantage for us to buy a permit at this time. The permit costs \$40 plus an annual fee of \$40. If we would mail 200 pieces six times a year at 11¢ each we would save \$28 the first year and \$68 the second year. We need to triple our membership!

The following individuals have joined our Society: Warren Gibson, Reno; John Hachey, Ontario; Doug Jensen, Nevada City; Marlene Keogh, Portola; Lynda Monger, Chico; Charlotte Rodgers, Portola; Peter Solyom, LaHabra; Bill Spier, Fernley; Joe & Darleen Williams, Portola. We welcome them.

This 11-cent coil stamp, issued Feb. 3, is the 13th issue in current series which features early modes of transportation. It depicts a caboose similar to one that was used in the 1890s by logging railroad in California's Sierra Nevada Mountains.



**THE WHEEL REPORT**

John J Ryczkowski

Western Pacific Tank Car 1583

This car is ex 1074 from series 1021-1080, 60 ca built by AC&F in Milton, Pa. in 1912 for the WP. This car had arch bar trucks when delivered but now sports Andrews trucks which were used to upgrade arch bars using the same wheels and journals by just replacing the side frames.

Truck Capacity 80,000 Lbs  
Tank Capacity 10,040 Gals  
Weight Total 39,800 Lbs

The 1583 will be renumbered back to 1074 and repainted silver with black frame and trucks. This to follow a sister tank car used by WP to transport spring water from Pulga to Sacramento, for the Feather River Spring Water Co. 1077 was used and was painted silver when in this service. Stenciling will follow WP's standard for this type of a car in which I have the drawings for.

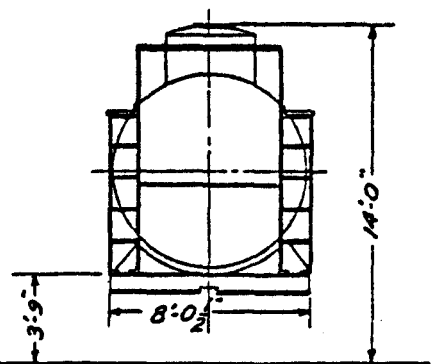
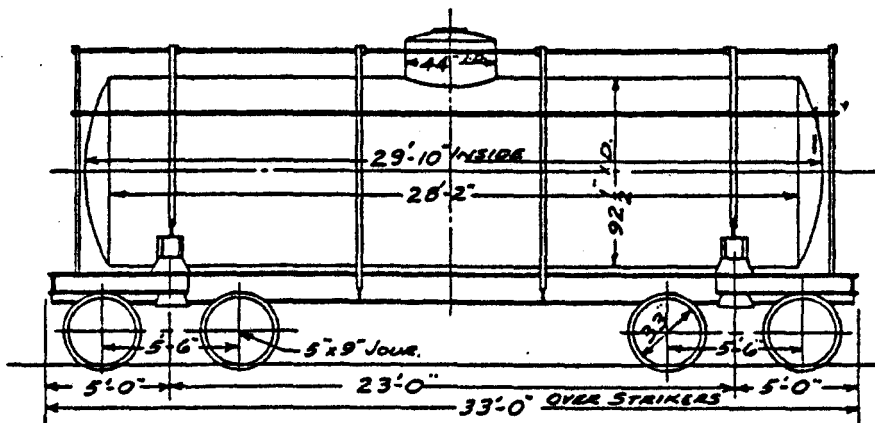
Most all the tank cars in this series have been retired and only 1583 on 2/18/84 was shown on UP's UMLER Car Data Record.

Other WP tank cars in this type and capacity were Series 1001-1010 Blt 1906 by AC&F in Berwick Pa Series 1081-1180 Blt 1912-13 bt AC&F Milton Pa The newer tank cars of 12,500 gals copy in series 1201-1250 were Blt in 1929 by American Tank Car Corp. and many are still in service.

**TANK CARS, CLASS TM  
BUILT BY A.C.&F. CO., MILTON PA. 1912  
SPEC. AAR II**

**CAR Nos. 1361-137  
NO. OF CARS 11**

**RENUMBERED FROM 1021-1080 SERIES**



TRUCKS C.S. ANDREWS TYPE  
CARDWELL DRAFT GEAR  
AAR FRICTION BEARINGS

TRUCK CAPACITY...80000 LBS.  
TANK CAPACITY...10040 GALS. AVG.

WEIGHT - BODY  
TRUCKS  
TOTAL 402