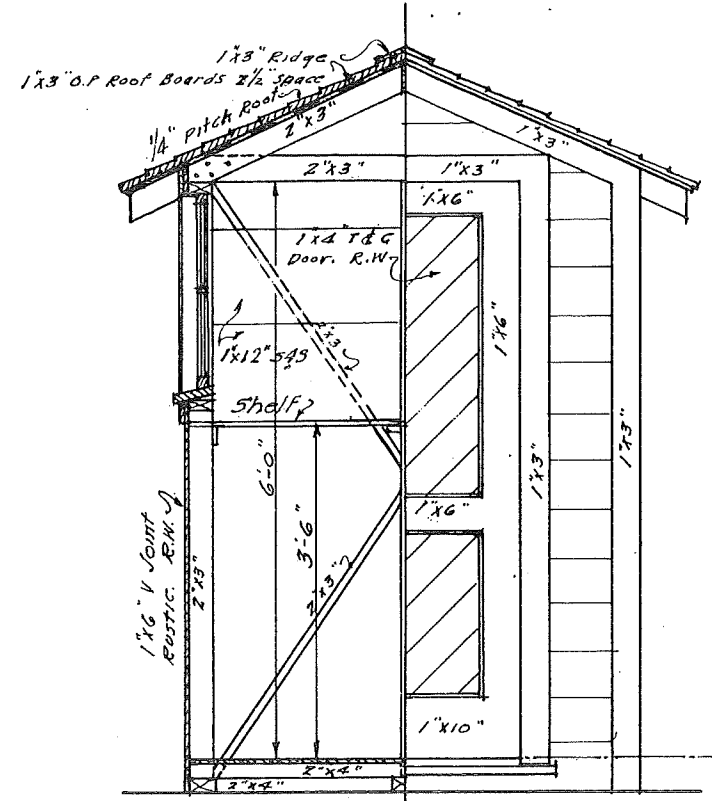
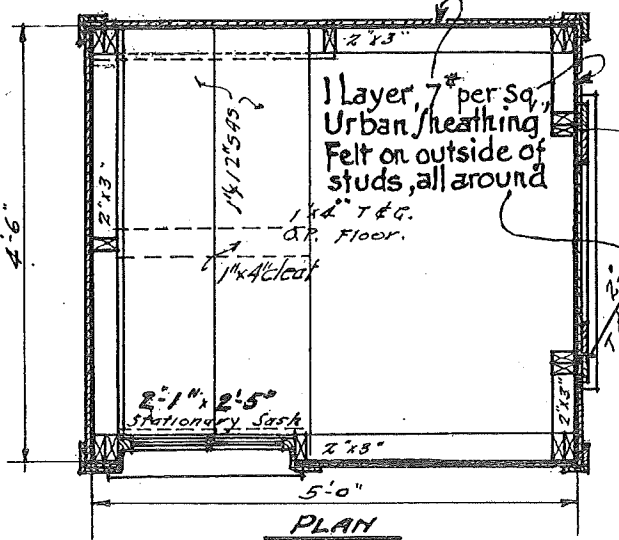


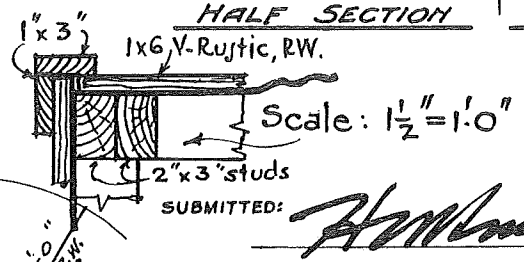
SIDE ELEVATION



HALF SECTION HALF ELEVATION



PLAN



SUBMITTED: *H. W. Minter*
BRIDGE ENGINEER

APPROVED: *J. M. Williams*
CHIEF ENGINEER

APPROVED: *E. W. Mason*
VICE PRESIDENT AND GENERAL MANAGER

BILL OF MATERIAL

No. Pieces	Size	Length	Material	Remarks	No. Pieces	Size	Length	Material	Remarks
3	2x4	5'-0"	O.P.	Floor Construction	1	2x6	2'-0"	R.W.	S4S Window Sill.
4	"	4'-6"	"	"	3	1/2 x 1 1/2	2'-0"	"	S4S Window Sill.
15	2x3	6'-0"	"	Studs	20	Bd. Ft.	1x4	T & G R.W.	For Door
2	"	5'-0"	"	Plates	2	1x6	6'-0"	"	For T. & G. Door
2	"	4'-6"	"	"	1	1x10	2'-0"	R.W.	S4S
2	"	4'-6"	"	"	1	Sash.	2'-1 x 2'-5"	1 3/8" thick	Super Pine Clear, No. 6.
1	"	1'-10"	"	Sill under Window	8	1x3	6'-6"	R.W.	S4S corner Board.
6	"	3'-2"	"	Rattlers	1	"	3'-0"	"	S4S Door Casings.
3	"	4'-6"	"	For Rattlers	2	"	6'-6"	"	"
9	"	4'-0"	"	Wind Bracing	2	"	2'-6"	"	S4S Window Casings.
1	"	3'-6"	"	"	2	"	3'-0"	"	"
1	"	4'-6"	"	"	130	Bd. Ft.	1x6	V Joint Rustic R.W.	"
1	"	2'-0"	"	"	1	Bundle	R.W. Shingles.	"	"
14	1x3	5'-0"	"	Roof Boards				HARDWARE	"
2	"	5'-4"	"	Ridge Board	2	8"		Steel T Hinges	"
1	2x6	3'-2"	"	Pool Sill.	1	6"		Safety Hinge Hump	"
4	1x12	4'-6"	"	Phone Shelf and Back	3#	8d		Nails.	"
2	1x2	1'-6"	"	Phone Shelf	2#	40d		"	"
32	Bd. Ft.	1x4	T. & G. O.P. Flooring	1/2#	6d			Finishing	"
1	1x4	2'-0"	O.P. Shelf Cleat	1#	3d			Shingling	"
3/4	Roll @	250 Sq. Ft.	Urban Sh. Felt						"

PAINT - 1 gal. Graystone - lead and oil paint
Iron Brown
10# Gold Water White
Painted as per C.E. 101

THE WESTERN PACIFIC RAILROAD CO.

STANDARD

TELEPHONE BOOTH

SCALE 1/2" & 1 1/2" = 1'-0" ADOPTED JUNE, 1927

Rev. 6/24/27
Rev. 8/17/27
" 3-2-31 Rev. 4/8/31 Rev. 4/17/31