

Non-slotted angle bar to be furnished by W.P.R.R. per R.J. Co. Dwg. File No. 652-69- Issue 2.

Bolts to be furnished by Manufacturer.

Manufacturer to furnish this bent in center $\frac{1}{2}$ " in 12"

This bolt to be furnished with thimble to allow $\frac{1}{2}$ " movement of spring rail at $\frac{1}{2}$ " point.

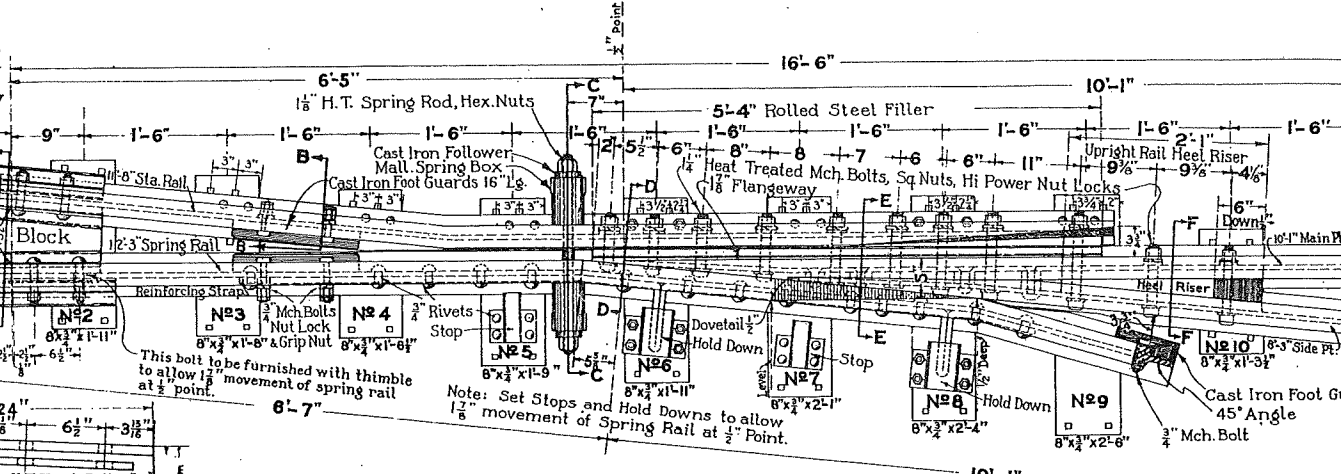
Holes $\frac{1}{8}$ " Dia Blk. To be stamped
6 H.T. Track Bolts 1"x6" Extra thick Sq Nuts Imp. H.P. Nut Locks

FORGED ANCHOR BLOCK

SECTION A-A

SECTION E-E

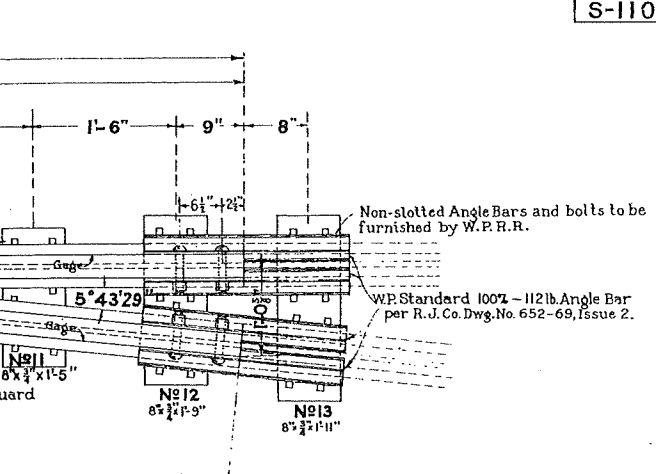
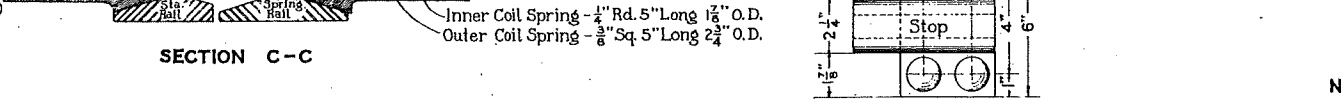
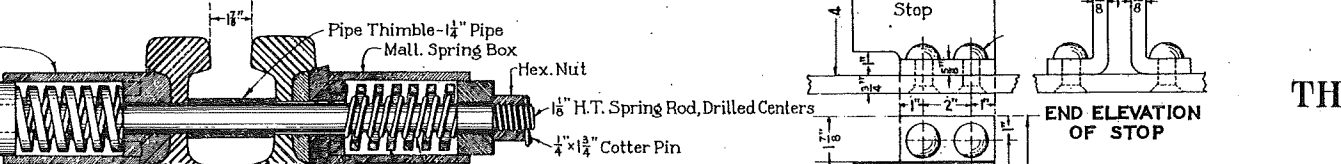
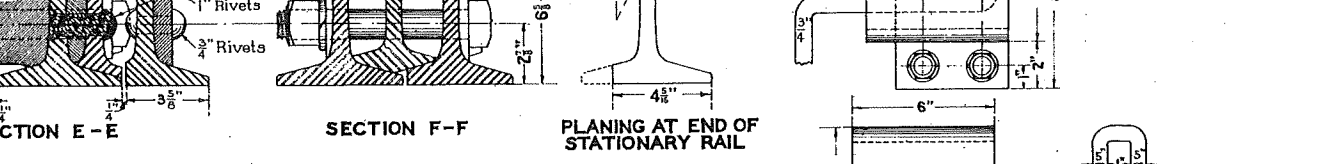
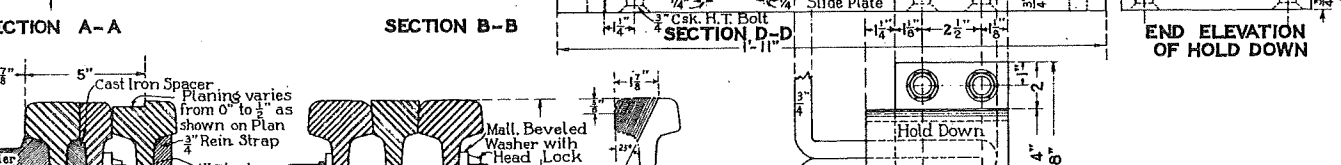
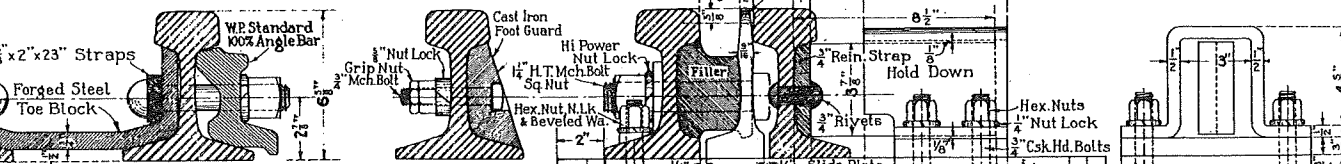
SECTION C-C



PLAN OF NO. 10 SPRING RAIL FROG - LENGTH 16'-6" R.H.



5/8" x 2" STRAP 2 Pieces



10'-1"

Non-slotted Angle Bars and bolts to be furnished by W.P.R.R.
WP Standard 100% - 112 lb. Angle Bar per R.J. Co. Dwg. No. 652-69, Issue 2.

Specifications:- As per A.R.E.A. Specifications Appendix A, Adopted March 1934.

Note:- Plates No. 1, 2, 10, 11, 12 and 13 to be shipped in one bundle. Plates No. 1, 2, 10, 11, 12 and 13 to be stamped with number of plate and weight of rail as shown on Dwg. C.E.-60-32-F-7, using prefix 'F' as noted. Plates No. 1, 2, 10, 11, 12 and 13 to be punched in accordance with Dwg. C.E.-60-32-F-9

APPROVED: *J.M. Williams* CHIEF ENGINEER.
APPROVED: *E. W. Mason* VICE PRESIDENT AND GENERAL MANAGER.

THE WESTERN PACIFIC RAILROAD CO.
STANDARD
NO. 10 SPRING RAIL FROG
112 LB. R.E. RAIL
NO SCALE
ADOPTED MARCH, 1935.
Revised Nov. 1, 1935, 3/2/1936.