



The Train Sheet

News from the Feather River Rail Society and the Portola Railroad Museum

ISSUE 118

March/April 2003

Preliminary Meeting
Western Pacific Railway Company.

San Francisco, March 3rd, 1903.

At a meeting held on the above date at the Law Office of Booth and Bartlett, Safe deposit Building, San Francisco, California, relative to the formation of a railroad corporation, the following persons were present, - Walter J. Bartlett, Henry F. Fortmann, John Lloyd, A. C. Kains, George A. Batchelder, Chas. A. Gray, J. Dalgell Brown, John Inadwell, James Inadwell, David F. Walker, and Fred M. West.

On motion of Walter J. Bartlett, seconded by John Inadwell, Henry F. Fortmann was elected Chairman of the meeting, and on motion of J. Dalgell Brown, seconded by Fred M. West, B. M. Bradford was elected Secretary.

After a general discussion it was resolved that a corporation be formed to be known by the name of Western Pacific Railway Company, for the purpose of constructing, owning, acquiring, operating and maintaining the following lines of railroad:

Commencing at the City and County of San Francisco,

- The Train Sheet -

News from the Feather River Rail Society
and the Portola Railroad Museum

Editor – Frank Brehm (916) 334-4470 or
email at trainsheet@wplives.com

Contribution Deadlines: Last Day of
February, April, June, August, October and
December.

*Contents Copyright © 2003 Feather River Rail
Society, All Rights Reserved.*

- Portola Railroad Museum -

P.O. Box 608
Portola, CA 96122-0608

Museum: (530) 832-4131
Fax: (530) 832-1854

The museum grounds are open to the public from 10:00 a.m. until 5:00 p.m. daily the first Saturday in March through the first Monday of November. The museum building is open from 10:00 a.m. until 5:00 p.m. daily. Train operations begin the last Saturday of May and continue through the first Monday of September. The museum grounds are closed to the public from the first Tuesday of November through the first Friday of March except for special events in which arrangements have been made in advance. If you wish to visit during the closed period it is advisable to call in advance and find out if the museum grounds will be open.

Entrance to the museum is free, although a suggested donation of \$5.00 is greatly appreciated.

The Feather River Rail Society, a tax-exempt public benefit California corporation, is the historical society for the Western Pacific Railroad and operator of the Portola Railroad Museum in Portola, California.

The FRRS is not associated with the Union Pacific Railroad.

FRRS Tax ID number is 68-0002774
Member of the Association of Railway Museums and the Tourist Railway Association, Inc.

- Board of Directors and Officers -

| | |
|-----------------|---------------------------|
| Rod McClure | President |
| Dan Brady | Treasurer |
| Andy Anderson | Director |
| Frank Brehm | Vice-President - Director |
| Kerry Cochran | Director |
| Steve Habeck | Director |
| Norman Holmes | Director |
| Gail McClure | Director |
| Hank Stiles | Director |
| Eugene Vicknair | Secretary - Director |

Issue No. 118

Published June 2003

| | |
|------------------------------------|---|
| A Message from the President FRRS | 3 |
| WPRRHS 2003 Convention Report | 4 |
| World Wide Western Pacific, Part 4 | 4 |
| Zephyr Project Progress | 5 |
| Fire Safety | 5 |
| CMO Report | 6 |
| Track Chart Books | 6 |
| Summary of Recent Board Meetings | 6 |
| Upcoming Events | 7 |

Cover Photo: The paper that gave birth to the Western Pacific March 3, 1903.
From March 1953 Mileposts

Back Cover: The Alameda & San Joaquin #1 became the first locomotive to haul revenue trains on the Western Pacific.
From March 1953 Mileposts

Web Pages of Interest

Feather River Rail Society (Official Site) www.wplives.org

| | |
|--------------------|--|
| CZ Virtual Museum | calzephyr.railfan.net |
| Tidewater Southern | www.tidewatersouthern.com |
| PRM | www.oz.net/~samh/frs |
| WPRRHS | www.wprrhs.org |
| SN Page | www.people.virginia.edu/~ggg9y |
| WP Virtual Museum | wpmuseum.railfan.net |
| Tidewater Southern | www5.pair.com/rattene/WP/TideIndex.htm |
| Western Pacific | www.wplives.com |

- FRRS Membership -

| <i>Yearly Dues</i> | | <i>Single Life Membership</i> | | <i>Family Life Membership</i> | |
|--------------------|----------|-------------------------------|-----------|-------------------------------|-----------|
| Associate | \$20.00 | Birth-17 years of age | \$1200.00 | Birth-17 years of age | \$1800.00 |
| Active | \$40.00 | Age 18-39 | \$900.00 | Age 18-39 | \$1350.00 |
| Family | \$60.00 | Age 40-61 | \$600.00 | Age 40-61 | \$900.00 |
| Sustaining | \$100.00 | Age 62 and above | \$300.00 | Age 62 and above | \$450.00 |

These are the dues for the duration of one year, with Life and Family Life being a one-time payment. Five year payment plans are available for life memberships.

Associate memberships do not have a vote, receive The Train Sheet but not the Headlight and are for one person only.

Active memberships receive both The Train Sheet and the Headlight, have voting rights and are for one person only.

Family memberships receive both The Train Sheet and the Headlight, have one vote and include all members of ones immediate family.

Sustaining memberships receive both The Train Sheet and the Headlight, are for a maximum of two persons with one vote each.

Life memberships receive both The Train Sheet and the Headlight, have voting rights and are for one person only for life.

Family Life memberships receive both The Train Sheet and the Headlight, are for a maximum of two people and have two votes (one per member) for life.

Send all applications, renewals and address changes to:

**Feather River Rail Society
Membership Dept.
P.O. Box 608
Portola, CA 96122-0608**

Address changes may also be sent to memberships@wplives.com

A Message From the FRRS President

By Rod McClure

April has been a very busy month. Gail and I, attended our first WPRRHS Convention in Oakland and we were very impressed! I was happy to see most of the Board of Directors there to enjoy and support the Historical Society also. Gail McClure and Frank Brehm manned the FRRS gift shop tables and Steve Habeck and Hank Stiles helped out setting up and packing up the merchandise before and after the show. There were great shows and clinics with Ernie Von Ebisch's presentation on his memories of the California Zephyr being one of the most popular along with Virgil Staff's movie on the East End of the WP. A special event was having 2 former California Zephyr cars open for the attendees to tour on Friday and Saturday. Of course Sunday, Chris Skow put on the "Domes Down the Valley" excursion with these cars which was a sold out event and from what I have heard was a Excellent adventure!!! I want to thank Barbara Holmes and Vic Neves for there outstanding work putting this Convention together. Thanks to Steve Hayes for all of his behind the scenes work and the raffle. Of course I can't forget to thank Thom Anderson as he is the Department Head for the Historical Society. Special thanks goes to Chris Skow of Trains Unlimited Tours for his work to make the "Domes Down the Valley" a great success. I am looking forward to next years convention in Reno. Try to attend as I think it will have some real special events in store.

Magnolia Tower is now being dismantled into pieces for its trip to Portola! At the convention, Director Eugene Vicknair announced that Amtrak and Keiwit Contractors had reached an agreement and have begun the process of dismantling and remediation of the Tower with no cost to the FRRS. Director Vicknair,

ISSUE 118

Doug Morgan and Vic Neves have been working with both parties for sometime and spent a lot of time making this happen. It is through their hard work that we are not going to have to pay any money to move the tower. As a side note to this, the Interlocking Machine is still there and complete and will be moved separately to prevent damage to it. The Union Pacific has graciously provided us with a gondola to put the tower in and move it to Portola free of charge. On behalf of the FRRS, I want to thank Messrs Vicknair, Morgan, and Neves for all their hard work and the Union Pacific for once again providing us with a car. Hopefully without any further or unexpected delays, the Tower (some assembly required) will arrive in Portola in the month of May. This will bring to a close a long and sometimes frustrating project on one hand but will signal the start of another which will require many volunteers help in a short amount of time. Once the Maggie is in Portola, we MUST put it back together as soon as possible. We can NOT leave it in pieces as it will begin to deteriorate quickly and will be nothing more than firewood. PLEASE, if you can, try and volunteer some time this Summer towards putting the Tower back together. Contact Eugene Vicknair to see what the schedule it going to be.

The Operating Department is going to be up and running by the time you get this. If you are interested in helping out with this vital part of the Museum please get in contact with Superintendent of Operations, Kerry Cochran so he can get you involved. The RAL program is also up and running. We are looking for some new help in the RAL program, if you are interested in becoming a RAL instructor let Superintendent Cochran know and he will give you the information. That's it for this issue, I hope to see you soon at the Museum!

PAGE 3

WPRRHS 2003 Convention Report

By Thom Anderson

The WPRRHS annual convention was held at the Oakland Airport Holiday Inn on April 11-12. 112 people attended, and 87 of those people attended the banquet on Saturday evening to hear Harold Meeker speak about his experiences working for the WP, and view a film by Virgil Staff covering the WP Eastern Division in the 1970s.

Other presentations included various WP and related Bay Area subjects by Vic Neves, Dunston Fish, Thom Anderson, Dave Pires, Don Olsen, Ernie VonIbsch, Drew Jacksich, John McCormick, Bob Heywood, Tom Lawler, John Walker, Tony Thompson, Seth Neumann, Dudley Westler, and Evan Werkema. Several railroadiana dealers were present, along with the PRM gift shop to sell items to the attendees. Models and WP related items were also on display for viewing.

It appears that a good time was had by all the attendees. This would not be possible without recognizing the efforts of Vic Neves, Barbara Holmes, Steve and Norma Hayes, and Bob and Lois Mersereau. These individuals performed a lot of the behind the scenes work that is necessary for an event like this, and I would like to commend them for their efforts. It was also gratifying to note President McClure, Vice-President Brehm, and Directors McClure, Cochran, Habeck, Holmes, Stiles and Vicknair being present this year, some of whom were attending their first WPRRHS convention.

Now that the WPRRHS 2003 convention is history, it's time to start looking at the one for next year. Holiday Inn in Reno is the place, and April 16-17 is the date. Convention host Frank Beavers is looking for participants to make presentations, etc., at the convention. If you are interested, please contact him at P.O. Box 759, Westwood, CA 96137, or e-mail wp751@thegrid.net.

There are preliminary plans to have another dome car excursion following the 2004 convention, just like the very successful "Domes Down the Valley 2003" excursion. Apologies are extended to those who did not get the word in time to book space for the 2003 excursion. Steps have been taken to avoid this in the future and to get the word out to every FRRS/WPRRHS member. Watch your mailbox at home for further updates through direct mailings and announcements in the Train Sheet.

A recent arrival on the modeling front may interest those in HO scale. Branchline Trains released a "Special Edition" car in their "Blueprint Series", stock #9002. The car is a 50-foot plug door boxcar painted and lettered Tidewater Southern. The car is painted in boxcar red paint with an orange feather on the right side of the car and TIDEWATER SOUTHERN on the left side, and four different car numbers are available. These cars are not the ones with the cornucopia emblem.

A comparison to a photo of a similar car on page 45 in Jim Eager's book "Western Pacific Color Guide to Freight and Passenger Equipment" reveals the model to be very accurate in detail and paint. The prototypes were built in 1957 and rebuilt with larger doors in the early 1970s. These cars were initially offered in four car sets through eBay, however they also recently appeared in late April at hobby dealers in the SF bay area available individually.

Contact your dealer for availability.

World Wide Western Pacific

By Eugene Vicknair, Part 4

The rise of the internet and the growing ease with which websites can be created has led to an explosion of information available to the world. Of particular interest to members of the Feather River Rail Society are the many sites devoted to the Western Pacific and related topics such as the California Zephyr and WP subsidiaries. In fact, a quick look at several popular search engines shows the WP family to be one of the best represented and documented railroads on-line. The following are some brief descriptions of several of these websites. They are grouped by railroad according to their primary focus, but many have information on related lines.

WESTERN PACIFIC Related..

Utah Rails.. utahrails.net

Don Strack's excellent website covering Utah railroading focuses very heavily on the Union Pacific, but has now added a section on one of the most overlooked sections of the WP. "East of Wendover" (utahrails.net/wp/wp-in-ut.htm) is still under construction, but currently includes descriptions of the WP line from the Nevada state line to Salt Lake City. Coming soon are photos and more information about this branchline rich section of the road. Also, the site includes Union Pacific rosters that chart those WP locomotives that went into UP service and information on UP engines leased to the WP prior to the merger. Rio Grande and Utah Railway sections are additional highlights of the excellent site.

Fallen Flags.. www.rr-fallenflags.org

Maintained by George Elwood, this site has hundreds of photos from railroads across the country, including some flags that still fly. There are sections for the WP and the Sacramento Northern, while some Central California Traction Company shots are located in the Miscellaneous "C" section. Photos include motive power, cabooses and freight cars. New images are added regularly, so this archive just keeps growing.

Western Rails.. www.trainweb.org/westernrails

Ron Jacox's Western Rails is a compilation of photos, links and information covering a wide variety of rail subjects from the western US. His page on the Alameda Belt Line has already been mentioned in this series, but there is much more here dealing with the WP family. A must see is the gallery showcasing the work of the photographer known by his Trainorders.com handle of "Yardclerk". One section is devoted to his WP shots, taken near the end of the orange and silver era. The "Switchers and Shortlines" section includes a page on the Yolo Short Line, operator of former Sacramento Northern lines.

Restoration of WP F7A 918-D..

www.trainweb.org/wp918d/index.html

A nice site covering the restoration of WP 918-D, owned by the Pacific Locomotive Association. While highlighting the ongoing work to bring this classic locomotive back to life, the site also includes a history of the 918, a WP F-unit photo gallery and

information on all 6 surviving WP freight F-units.

Yesteryear Depot WP Database..

www.yesteryeardepot.com/westpac.htm

A collection of WP related photos, mostly from the Fred Stoes collection. A wealth of steam engine shots, along with CZ and diesel views.

There are, of course, many more websites that touch on the Western Pacific family of roads. This has been just a small sample of some of the major ones. New sites are appearing all the time and several e-mail groups can be found that deal with WP related subjects, including the FRRSList, WPList, SacNorthern, BayAreaRailHistory and DomecarList on the Yahoo system.

WP Lives in Cyberspace.

Zephyr Project Progress

By Eugene Vicknair

With winter slowly releasing the High Country, the Silver Hostel is again showing signs of progress. Eric McClure has been the prime mover of work in recent months, almost single handedly completing the dome and bar area removals and evaluating the reusable materials and undersurfaces of the car. I can't thank him enough for his dedication and energy.

We have had the first dome window purchased! Wayne and Linda Monger are now the proud "owners" of a side dome window. They will be enjoying a dinner trip on the McCloud Railway and, some day, a trip in the Hostel next to their window.

The "Buy A Window" program has undergone some revision. Donors will still receive a dinner train trip and their name(s) on a plaque in the car. Now they will also receive their name and dedication on a CZ/Silver Hostel seat back cover. Each cover will have three lines of text, allowing for names, dedications, nicknames, etc. These covers will remain in the car for 3 years after the completion of primary restoration. At that time, they will be given to the donors as a gift for their donation. The plaque will remain permanently.

Also, there have been requests for group donations to a single window. This is possible and can be arranged by contacting me at eugene@zephyrproject.com and setting it up. A dinner train trip is not given for a group donation (group being defined as more than two unrelated people or more than a single family) and the seat cover will be given to a recipient designated by the group. This has been requested so far as a way to dedicate windows in memory of someone. For more details, drop me an e-mail.

Down in the Bay Area, I've been working with Robert McNeal of Studio Red on the tooling needed to reshape the damaged trim pieces on the carbody. We have acquired more lights for the car, including the lights needed for the Zephyrette's and Porter's bedrooms and most of the remaining hallway.

During the Domes Down the Valley excursion, I had the pleasure of meeting Silver Lariat owner Burt Hermey and speaking again with Silver Solarium owner Roy Wullich. Both men have graciously agreed to share information with us concerning details of their cars and any information that will aid the Hostel restoration. Thanks to my conversations with Mr. Hermey, we are

working with the window supplier on ways to lower the cost of the windows and create more visually accurate reproductions.

The grand Parts Scavenging Trip is now planned for early June. Some of us will be traveling to the Midwest to evaluate a trove of CZ dome-lounge-dormitory parts that are available for the Hostel. Hopefully, we'll have some good news on that next issue.

Recent donors;

Clyde W. Brehm, Jr., Malcolm Church, Lloyd Cornell, Frank Hendricks, Wayne & Lynda Monger, David F. Myrick, John Whitehurst, Harold Wardley.

Fire Safety

The following safety tip is brought to you as a service of your society.

Gas Grills & Propane Tanks

Propane is heavier than air, if a leak occurs the gas vapors will follow the contour of the area and seek its lowest level eventually finding an ignition source flashing back to the tank. If a fire or leak occurs, leave the area and immediately notify the Fire Department.

Storage of tanks are to be away from residence (not in garage or basement). Storage of tanks, even in single family residence is not legal. Store tanks in an upright position and never assume that a tank is empty. Store tanks in cool areas, avoiding direct sunlight.

All connections of the tank should be tested for leaks using a soapy water solution. Tiny bubbles will indicate a leak. This should be done when first connected and periodically thereafter.

All connections must be tightened with a proper size wrench. NOTE: flammable gas cylinders have a left-handed thread, a reverse of the normal threading. It must be tightened by turning counter clockwise.

Cylinder valve plugs (CPV) are required to be installed on all full and empty cylinders when they are not connected or being transported.

Also close the cylinder valve when not in use.

Cylinders must be painted and in good repair. They must be tested at an LPG plant after 12 years of service and every five years thereafter.

A gas-fired barbecue must NEVER be used inside any structure.

Gas-fired barbecues are to be utilized by adults only and NEVER by children.

It is advisable to keep a flame retardant padded mitt nearby so that it is possible to shut the cylinder valve off at any time.

When disposing of empty propane gas tanks, it is recommended that they be returned to the facility that refills the tanks. Propane filling stations are capable of removing the valve. They will store the tank outdoors in an upright position for several months, allowing any residual gas to dissipate.

UNDER NO CIRCUMSTANCES, SHOULD THE CONSUMER TRY TO REMOVE THE VALVE AND/OR TRY TO DISPOSE OF THE TANK.

CMO Report

By Hank Stiles

Once again it is time to report on the ongoing saga of equipment repair at the museum. At times we feel like the postman in that we will endeavor to do our duties come rain, snow etc. That may be a bit dramatic but it seems that spring will just not arrive. Cold and wet gets old fast but we hope for better weather soon.

The FR&W 1857 (Fairbanks Morris H-12-44) has been deadlined due to leaks in the oil cooler. After much searching for seals and gaskets and a \$1500 estimate for repairs, it was decided to by pass the cooler as we will not be working the engine hard enough to require the cooler. The fact that this repair could be effected for under \$500 did not hurt either. We have all the original parts stored so we can return the oil cooler to service if the need arises. This engine should be up and running after the May maintenance clinic.

All of the parts should also have arrived for the WP 2001 by the May clinic so we can replace the discharge elbow gaskets on the oil pumps. This will allow us to install the water pump and that engine will be up and running without dripping oil on the ballast. Gaskets had previously been ordered twice and both times we received the wrong ones. Thankfully with the help of Ray at RSI (EMD parts distributor) we finely received the correct ones. It seems that 2001 being the first GP-20 made it a little bit of an oddball. This may go in the rental fleet so we can take WP 921-D out of service for some needed repairs.

Once we get all the servicing of our in-service locomotives completed hopefully we will be able to sit, drink coffee and swap stories. This will also give us time to think about the other jobs that need doing. Please come up and help us drink coffee and tell your own stories, we need some new ones.

See you in Portola.

Track Chart Books Available

The Feather River Rail Society is pleased to announce a limited run printing of the complete track charts of the Western Pacific Railroad including the Sacramento Northern and Tidewater Southern. Reproduced from an original booklet dated January 1, 1981 the complete system is represented including all branches. Spiral bound and printed on high quality paper with heavy color covers which are protected by a clear protective sheet this will be a great addition to your collection. Printed size is 8-1/2 x 11 in landscape format.

Retail price is 45.95 with a member price of 41.35. Shipping and handling is 5.00 each. California residents please include 7.25% sales tax.

Send orders to;

WP Track Chart
c/o FRRS
P.O. Box 608
Portola, CA 96122-0608

PAGE 6

Summary of Recent Board Meetings

Any member in good standing may request a complete copy of the transcript of board meetings from the Society. There is a nominal charge for each copy which covers postage and administrative costs. Full minutes are posted on the FRRSlist hosted by Yahoo Groups.

March 2003 Board Meeting

Motions and Actions Summary

Motions Passed

Consent Motions – Motion 03-03-02

Minutes – Approval of the minutes of the regular meeting held February 1, 2003.

Financial Reports – Removed from Consent Agenda under motion 03-03-01

Motions

Motion 03-03-03.. WP Convention Excursion 2003

Run a tour in conjunction with Train Unlimited, Tours as outlined in the original proposal. Motion made by Director Stiles, seconded by Director Habeck. Motion withdrawn for modification.

Motion 03-03-04.. WP Convention Excursion 2003

Run a tour in conjunction with Train Unlimited, Tours as outlined in the proposal given to the Board, with the current financial risk identified as \$1,400 and to be funded, if necessary from budget line item 54090 – Special Events Expenses. Motion made by Director Stiles, seconded by Director Habeck. All Directors present voted in favor – Motion carried.

Motion 03-03-05.. Settlement of Issues Surrounding Quincy 3 Lease to V&T

Motion to accept Settlement Agreement Contract with wording changes recommended by Legal Counsel. Motion made by Director Habeck, seconded by Director Brehm. All Directors present voted in favor – Motion carried.

Motion 03-03-06.. Lease of Quincy 3 to V&T

Execute Settlement Agreement, then request return of Quincy 3 with reconsideration of lease upon repair. Motion forwarded by Director Cochran, seconded by Director Vicknair. All Directors present voted in favor, with the exception of Director McClure who abstained – Motion carried.

Motion 03-03-07.. Zephyr Project Parts Trip Expenses

Authorization for travel expenditure for Director Vicknair up to \$1,700 as provided in the Zephyr Project report for parts inspection, pending confirmation that those funds are available from the Treasurer, and under line item 56490 - Zephyr Project. Motion made by Director McClure, seconded by Director Brehm. All Directors present voted in favor, with the exception of Director Vicknair who abstained – Motion carried.

Motion 03-03-08.. Site Plan Modifications

Accept changes and modifications to the Site Plan as proposed by Site Committee and presented by Director Vicknair. Motion forwarded by Director Brehm, seconded by Director Stiles. All Directors present voted in favor, with the exception of Director Vicknair who abstained – Motion carried.

Motion 03-02-09.. Alcohol and Drug Policy

Acceptance of Alcohol and Drug Policy as presented by Director Cochran. Motion forwarded by Director McClure, seconded by Director Habeck. All Directors present voted in favor with the exception of Directors Stiles and Brehm who voted against. Motion carried. Director Brehm. All Directors present voted in favor, with the exception of Director Vicknair who abstained – Motion carried.

THE TRAIN SHEET

Summary of Recent Board Meetings

Motion 03-03-10.. Trade of Historic WP Materials

Trade WP materials for individual Life Membership and one issue of each available back issue of the Headlight subject to inspection of materials. Motion forwarded by Director Stiles, seconded by Director Habeck. All Directors present voted in favor, with the exception of Directors Brehm and McClure who abstained – Motion carried.

Motion 03-02-11.. Temporary Modification of Election Procedure

Temporarily accept the timelines as proposed by the Election Committee, for this year and this year only, in modification to the Nomination and Elections Policy. Motion forwarded by Director McClure, seconded by Director Cochran. All Directors present voted in favor – Motion carried.

Closed Session

Meeting adjourned to closed session to consider a personnel matter continued from previous meeting. President McClure reported that no action was taken with respect to the personnel matter discussed.

Items Postponed, Held Over or Continued

Quincy 3 Lease
Magnolia Tower
WPRRHS 2004 Excursion
Advertising Manager
PFE/WP 55742

April 2003 Board Meeting

Motions and Actions Summary

Motions Passed

Consent Motions – Motion 03-04-02

Minutes – Approval of the minutes of the regular meeting held March 5, 2003.

Financial Reports – Removed from Consent Agenda under motion 03-04-01

Motions

Motion 03-04-03.. PFE/WP 55742 Reefer Car

Acceptance of PFE/WP Reefer Car report as presented. Motion made by Director Vicknair, seconded by Director Holmes. All Directors present voted in favor – Motion carried.

Motion 03-04-04.. Museum General Manager

Creation of position of General Manager based on the written description presented. Motion made by Director Brehm, seconded by Director Stiles. Board consensus was to table this issue allowing Board members to review the description, forward commentary to President McClure. and have the item presented for action at the next meeting.

PRESERVING “THE FEATHER RIVER ROUTE”

WP Lives, in Portola!

Mission Statement

The mission of the Feather River Rail Society is to preserve the history of the Western Pacific Railroad. The secondary mission is to preserve the history of the subsidiary and interchange railroads within the territories it served.

Mission Goals

To preserve and interpret the history of the WP, the “Willing People” as a vital link in the development of the rail industry on the West Coast, including the steam and diesel evolution, WP’s influence in the passenger tourism industry, the impact of freight competition between neighboring railroads. WP’s influence in the lumber, mining and agriculture industry from Plumas County throughout California, Nevada and Utah

ISSUE 118

Actions and Notices

Indian Valley Rec and Parks Dept, Greenville, CA requesting FRRS participation in 2nd Annual Sierra Nevada Chowder Cookoff to be held Saturday, Sept 27th in Greenville.

CMO Stiles is continuing to monitor issues regarding Quincy 3 on V&T RR.

Director Habeck and John Walker to update the FRRS/WP Display at the Portola Library.

Director Vicknair to explore costs associated with possible acquisition of SN boxcar 2349.

Reported that several pneumatic car jacks missing. Director Holmes stated that he had taken two to Virginia City. President McClure and Director Stiles advised there were three as well as some tools marked FRRS on the V&T property.

Portola Railroad Days: There will not be a carnival this year. Possibility of private cars on display, and expanded booths at the city park. The committee has requested that a percentage of any fundraising events go back to the city to help establish a fund for PRD events. This would not apply to gift shop or train ride sales.

Loren Ross and Director Breitwieser are working on RAL program and scheduling. There are currently 4 RAL engines up and running with a 5th to follow shortly.

Two inquiries regarding equipment trades/deacquisitions forwarded to A&D Committee for review. Items in question include ATSF diner, SP RS-32, SP SD9, BLW AS-616 and KCC Alco RSs. Crew Training weekend is scheduled for May 3-4.

WP Hospital broken into and fire hydrant leaking. Both issues being addressed.

WPRRHS Convention April 11-12. Domes Down the Valley Excursion April 13.

Closed Session

Meeting adjourned to closed session to consider a personnel matter continued from previous meeting. President McClure reported that by consensus of the Board, direction was given to the President regarding resolution of the personnel issue and no action was taken. Also, no action was taken with respect to legal issues.

Items Postponed, Held Over or Continued

Quincy 3 Lease
Magnolia Tower
WPRRHS 2004 Excursion
Advertising Manager
PFE/WP 55742 reefer
SN 2349 boxcar

respectfully submitted by Eugene Vicknair, secretary

Upcoming Events

June (Cabooses Trains)

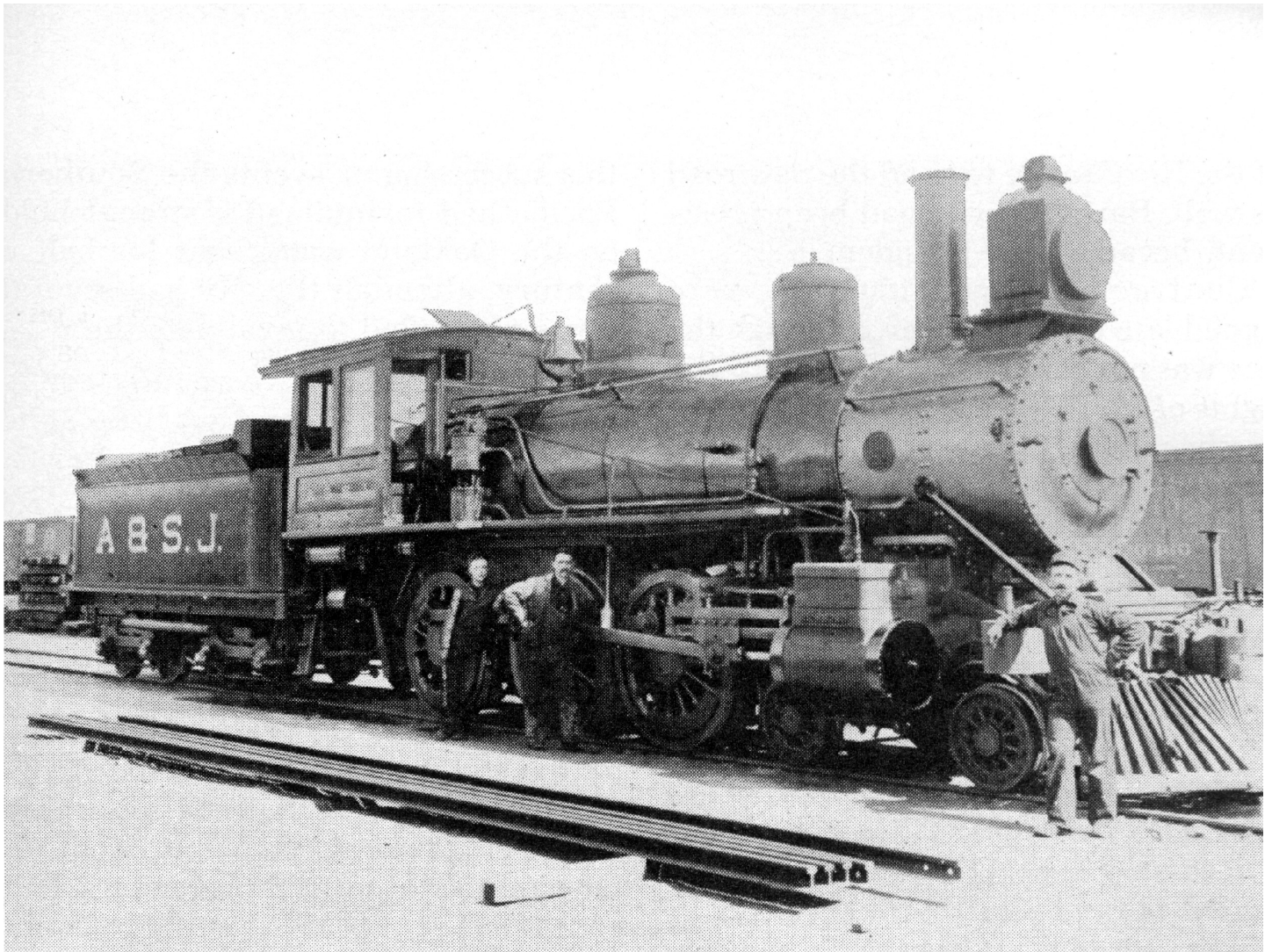
7 Locomotive Maintenance Clinic, Board Meeting, 1 p.m., Bar-B-Que 5:30 p.m., Annual Membership Meeting 7:30 p.m.
28-29 Amateur Radio Field Day

July (Cabooses Trains)

12 Locomotive Maintenance Clinic, Board Meeting, 6 p.m.
26-27 Porola Railroad Days

August (Cabooses Trains)

2 Locomotive Maintenance Clinic, Board Meeting, 6 p.m.
23 Volunteer Appreciation Day
23-24 Work Weekend



The Train Sheet
Feather River Rail Society
P.O. Box 608
Portola, CA 96122-0608

NonProfit
U.S. Postage Paid
North Highlands, CA
95660
Permit No. 278