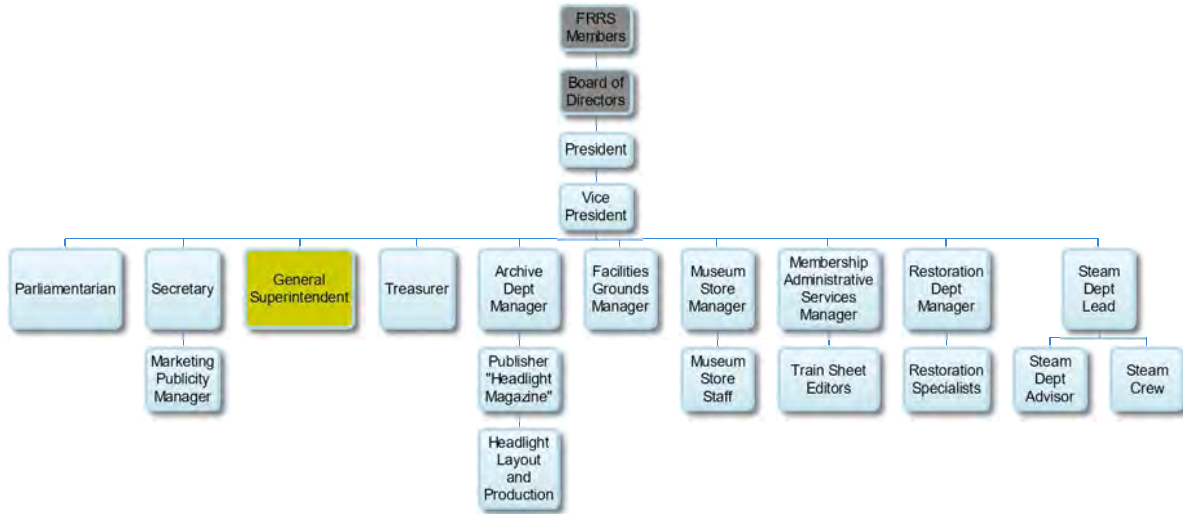
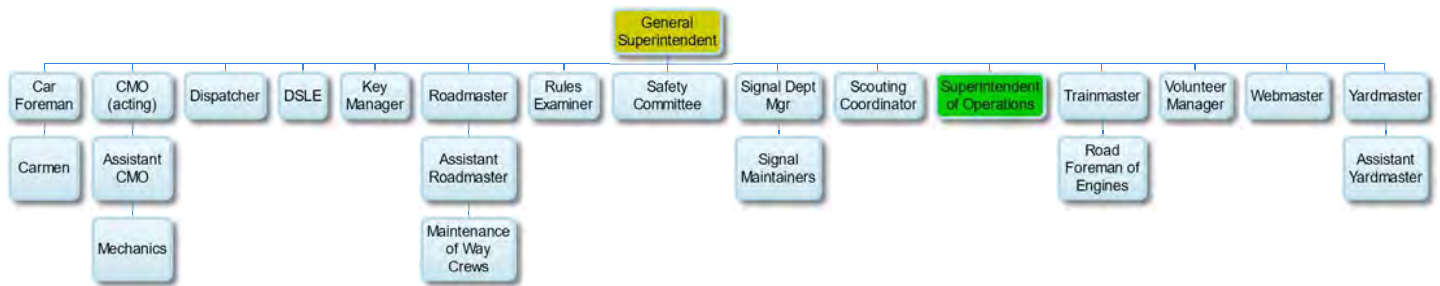


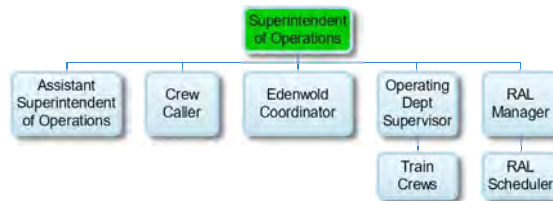
FRRS Organization Chart



General Superintendent Organization Chart



Superintendent of Operations Organization Chart



Archive Dept Mgr	Kerry Cochran	Membership Mgr	Eugene Vicknair	Secretary	Eugene Vicknair
Assistant CMO	David Elems	Museum Store Mgr	KC Dunn	Signal Dept Mgr	Kerry Cochran
Assistant Roadmaster	Ethan Doty	Opt Dept Supervisor	Paul Finnegan	Steam Dept Advisor	Steve Lee
Assistant Yardmaster	Loren Ross	Parliamentarian	Kerry Cochran	Steam Dept Lead	Roger Stabler
Car Foreman	Phillip Schmierer	President	Steve Habeck	Superintendent of Operations	Loren Ross
CMO	Vacant	Publisher Headlight	Dave Pires	Train Sheet Editors	Matt Elems
Crew Caller	Paul Finnegan	RAL Mgr	Loren Ross		Paul Finnegan
DSLE	Greg Elems	RAL Scheduler	Ethan Doty	Vice President	Greg Elems
Edenwold Coordinator	Kerry Cochran	Restoration Dept Mgr	Steve Habeck	Volunteer Mgr	Kerry Cochran
Facilities Grounds Mgr	Charlie Spikes	Road Foreman of Engines	Greg Elems	Webmaster	Paul Finnegan
General Superintendent	Kerry Cochran	Roadmaster	Greg Elems	Yardmaster	Steve Habeck
Headlight	Mike Mucklin	Safety Committee	David Elems		
Key Mgr	Kerry Cochran	Scouting Coordinator	Loren Ross		