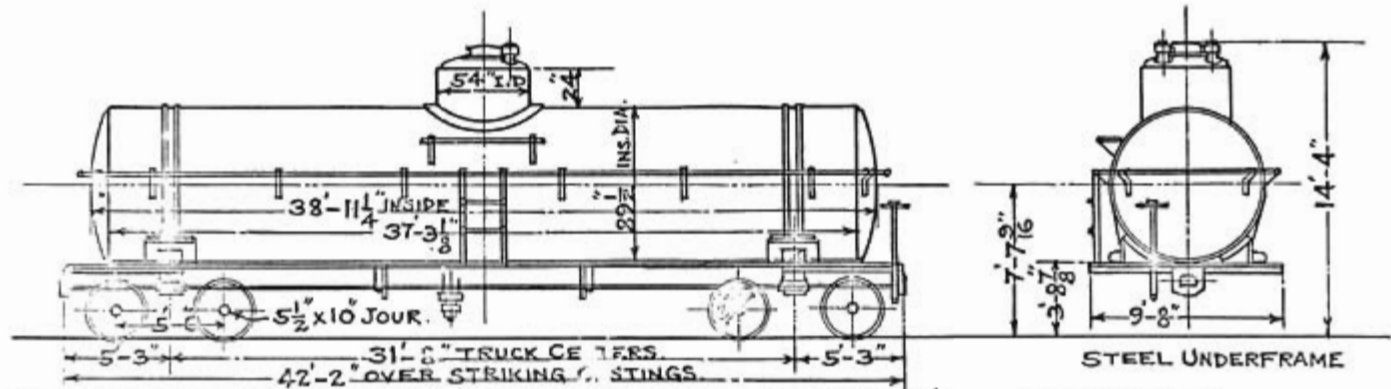


BUILDERS SPECIF. No. 990
ORDER No. 2452

STEEL TANK CAR, CLASS TM
BUILT BY GENERAL AMERICAN TANK CAR CORP.
1929.
SPEC. AAR III

CAR No's. 1201-1250
ORIG. No. OF CARS 50

REV.
5-19-30.
4-2-62



SYDINGTON SIDE FRAME TRUCKS.
CARDWELL DRAFT GEAR G-25AA-SPL
AAR FRICTION BEARINGS

TRUCK CAPACITY	100000 LBS.
TANK	12500 GALS.

WEIGHT-BODY TRUCKS	
TOTAL	52500 LBS.

STEEL TANK CAR CLASS TM
 BUILT BY ACF CO. MILTON, PA. 1912-13
 SPEC. AAR II

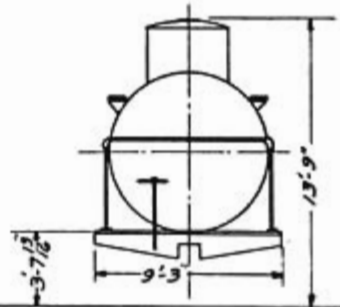
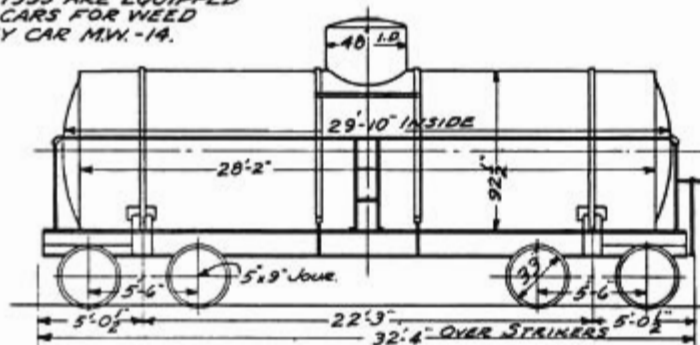
CAR Nos. 1301-1359
 No. of Cars 59

NOTE:

CARS 1327 & 1355 ARE EQUIPPED
 WITH ELECTRIC DRIVEN PUMP
 FOR CAR OIL SERVICE.

RENUMBERED FROM 1081-1180 SERIES

CARS 1333 & 1335 ARE EQUIPPED
 AS SOLUTION CARS FOR WEED
 KILLER SPRAY CAR M.V. -14.



STEEL UNDERFRAME

TRUCK C.S. ANDREWS TYPE.
 CARDWELL DRAFT GEAR
 AAR FRICTION BEARINGS

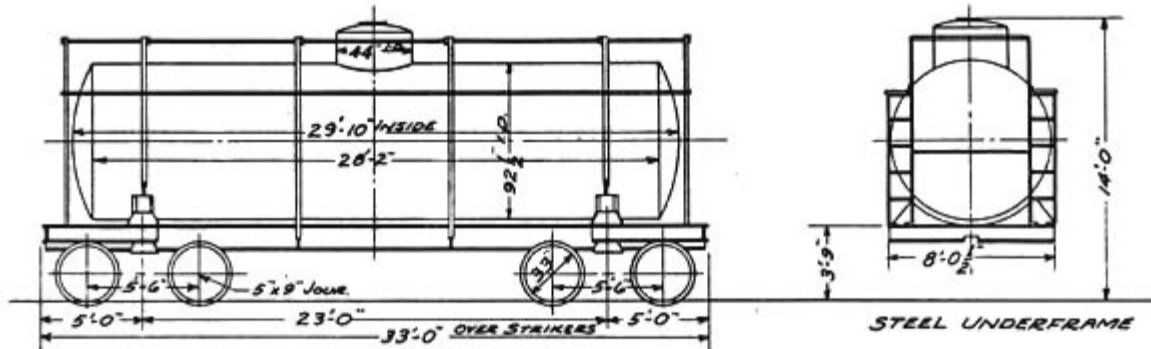
TRUCK CAPACITY...80000 LBS.
 TANK CAPACITY...10040 GALS. AVG.

WEIGHT-BODY
 TRUCKS _____
 TOTAL 40500

TANK CARS, CLASS TM
 BUILT BY A.C.F. CO., MILTON PA. 1912
 SPEC AAR II

CAR Nos. 1361-1371
 NO. OF CARS 11

RENUMBERED FROM 1021-1080 SERIES



TRUCKS C.S. ANDREWS TYPE
 CARDWELL DRAFT GEAR
 AAR FRICTION BEARINGS

RWC 4-3-62

TRUCK CAPACITY...80000 LBS.
 TANK CAPACITY...10040 GALS. AVG.

WEIGHT - BODY
 TRUCKS
 TOTAL 40200