

Feather River Rail Society

P.O. Box 1104, Portola, CA 96122

916-832-4737



The Feather River Rail Society is planning to open the Portola Railroad Museum on Memorial Day weekend (May 25-26-27). We are looking for community wide support for this event, which will include train rides for the public.

We would like to ask your organization to participate with a food/beverage booth and to have some kind of ceremony for Memorial Day.

We expect to make this an annual event.

Sincerely,


Norman W. Holmes, President



GRAND OPENING



PORTOLA RAILROAD MUSEUM MEMORIAL DAY WEEKEND MAY 25-26-27

The Feather River Rail Society is proud to announce the Grand Opening of the new "Portola Railroad Museum" located in the Feather River Canyon at Portola, California. With the help of the Union Pacific Railroad we have assembled a remarkable collection of Western Pacific equipment in just two short years. We are also collecting rolling stock from other roads as well. We are preserving western railroading in general and Western Pacific history in particular.

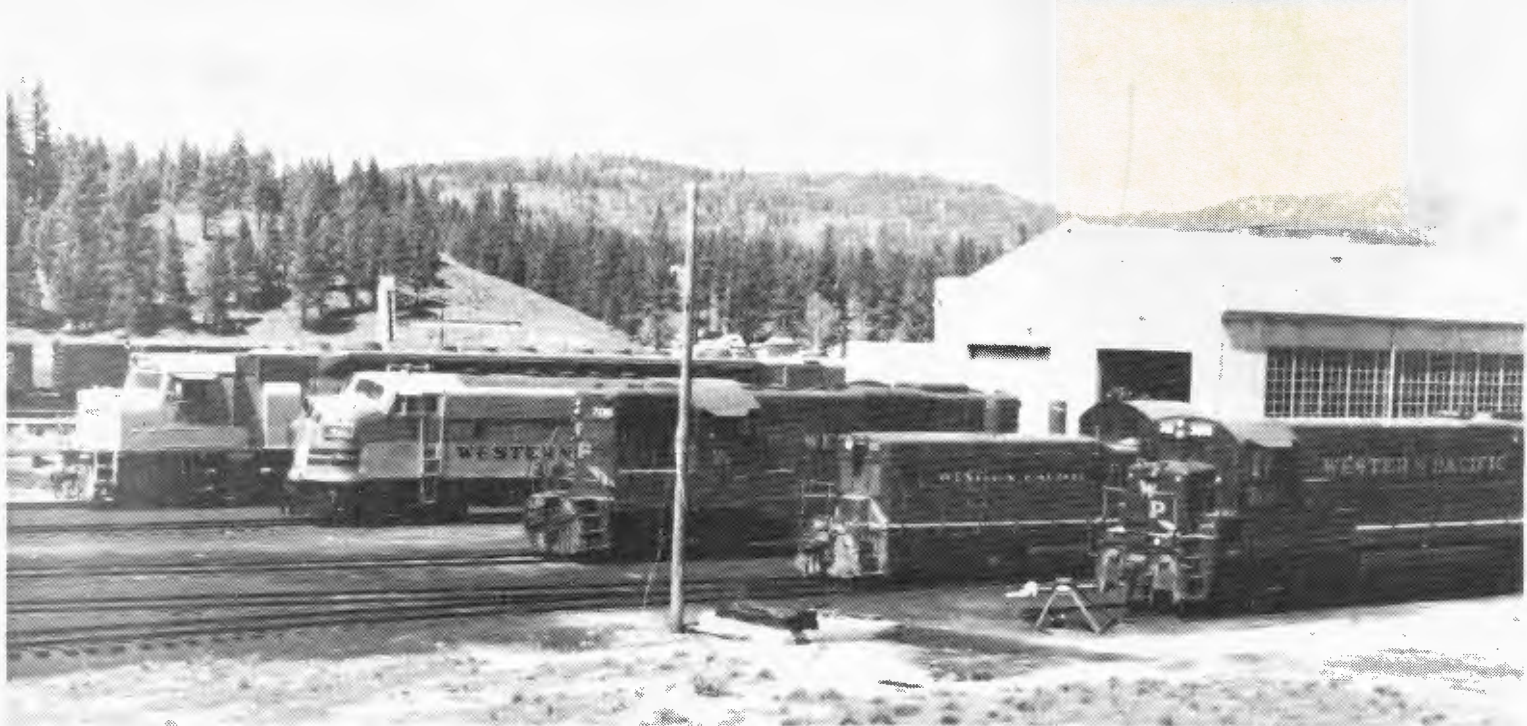
We will be operating both passenger and freight trains on the museum trackage. Train rides will be available all three days from 10:00 a.m. to 4:00 p.m. We will also stage all Western Pacific freight trains for pictures. Several locomotives will be in operation including WP 921-D F7A, WP 608 NW-2 and possibly Clover Valley logging steamer No. 8, a 2-6-2 Baldwin. All other equipment will be on display and spotted for photos, including, UP 6946 DDA-40X Centennial, WP 3051 U30B, WP 708 GP7, WP 428 caboose, SN 1632 caboose and many different freight cars. Displays will be set up inside the old Western Pacific diesel shop with many old artifacts of western railroading available for viewing. Daily Western Pacific slide and movie shows will be shown. Plenty of food and drink will be available too.

Come join us for a grand weekend of railroading in the High Sierra. Portola is located on the old Feather River Route of the Western Pacific Railroad some 50 miles northwest of Reno, Nevada on California State Route 70.



FEATHER RIVER RAIL SOCIETY
P.O. BOX 8
PORTOLA, CALIFORNIA 96122





WELCOME TO THE GRAND OPENING OF THE PORTOLA RAILROAD MUSEUM

Memorial Day Week End May 25-26-27, 1985

OPERATED BY THE FEATHER RIVER RAIL SOCIETY

Our Grand Opening Ceremony is scheduled for 10AM Saturday. It will be held at the west end of the Diesel Shop Building (3). After the ceremony WP 921 will "Break the Ribbon" and once outside passengers will board the train for the first ride around the balloon track. Subsequent boardings will be held at the parking lot (1).

Passengers will board the train using the caboose steps nearest the flat car on either end. Please show your boarding ticket to the trainman. Passengers are asked to remain seated and are not allowed to pass between the cars when in motion.

The passenger train will be in operation between 10 and 4 all three days of the weekend. A special freight train will be operated for photographers after 4 on Saturday and Sunday.

We ask that our guests be very careful around the equipment and watch for train movements and to keep children close at hand. We ask that no one be allowed to climb on the equipment the Union Pacific 6946 will be open to walk thru the cab and engine area.

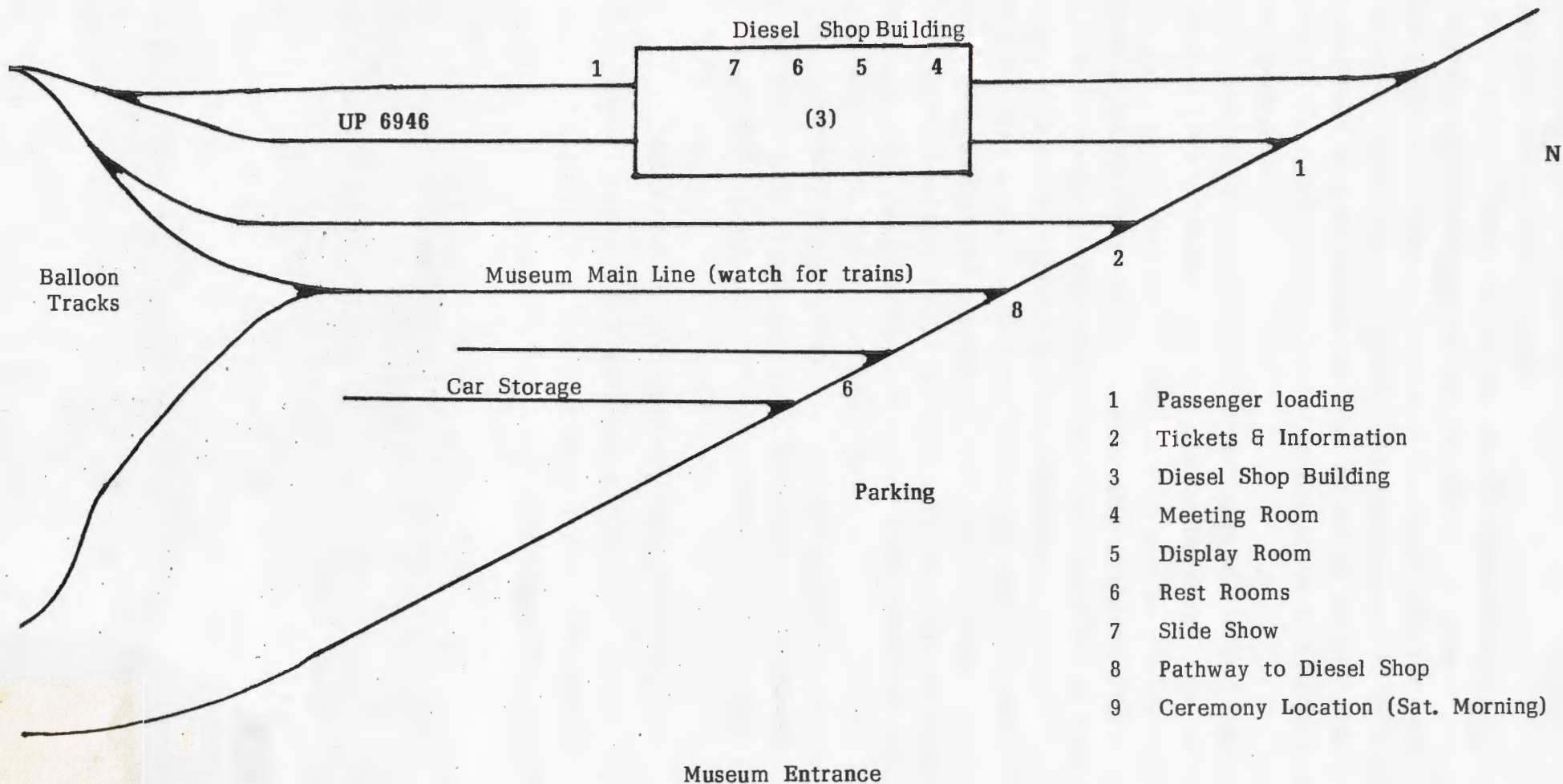
Food and drinks are available at the American Legion booth inside the Diesel Shop and starting at 5 on Saturday, a BBQ dinner will be served in the meeting room (4). Please sign up on the reservation list.

Admission to the museum is free....train ride tickets are \$2 each or \$5 for families. Hold on to the tickets as they are good for rides all day on the date sold....passenger operations will again be held on June 29-30, July 27-28 and on Portola Railroad Days August 24-25.

The Portola Railroad Museum is operated by volunteers from the Feather River Rail Society and is supported by donations and the membership. A donation box is located in the Diesel Shop for your convenience. We welcome anyone interested in becoming a member to please join and keep the WP alive in Portola.

Thank you for attending our celebration.....

Union Pacific Railroad (ex Western Pacific) Main Line



- 1 Passenger loading
- 2 Tickets & Information
- 3 Diesel Shop Building
- 4 Meeting Room
- 5 Display Room
- 6 Rest Rooms
- 7 Slide Show
- 8 Pathway to Diesel Shop
- 9 Ceremony Location (Sat. Morning)



FEATHER RIVER RAIL SOCIETY, POST OFFICE BOX 8, PORTOLA, CA 96122