

OUTFIT CARS
MOTIVE POWER DEPARTMENT
WESTERN PACIFIC RAILROAD
DATE: May 1, 1947

Arrangement of cars in outfits
Outfit Car Stenciling
Office Car Type B
Kitchen and Diner Type C
Foreman, Timekeeper, Commissary and Cooks Quarters Type D
Kitchen Car Type E
Supply and Cooks Quarters Type F
Diner Type G
Bunk Car Type H
Divided Bun Car Type J
Divided Bun Car with Single Shower Stall Type JB
Two Shower Bath Car with Tank and Tool Compartment Type K
Six Shower Bath Car with Tool Compartment Type L
Combination Kitchen, Diner and Bunk Car Type M
Bunk Car with 500 Gallon Water Tank Type N
Tool Cars for Ditchers 49 and 50 Type ST
Electricians Supply and Quarters Type X-1

Paul Finnegan
5/13/21

Book No. 2-B

OUTFIT CARS

MOTIVE POWER DEPT.

WESTERN PACIFIC RAILROAD

DATE

██████████

May. 1, 1947

Business Car 101

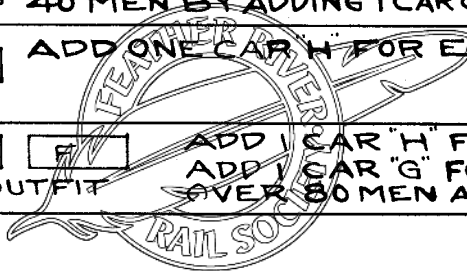
ARRG'MT OF CARS IN OUTFITS.

A B FOR COOK & 4 MEN.

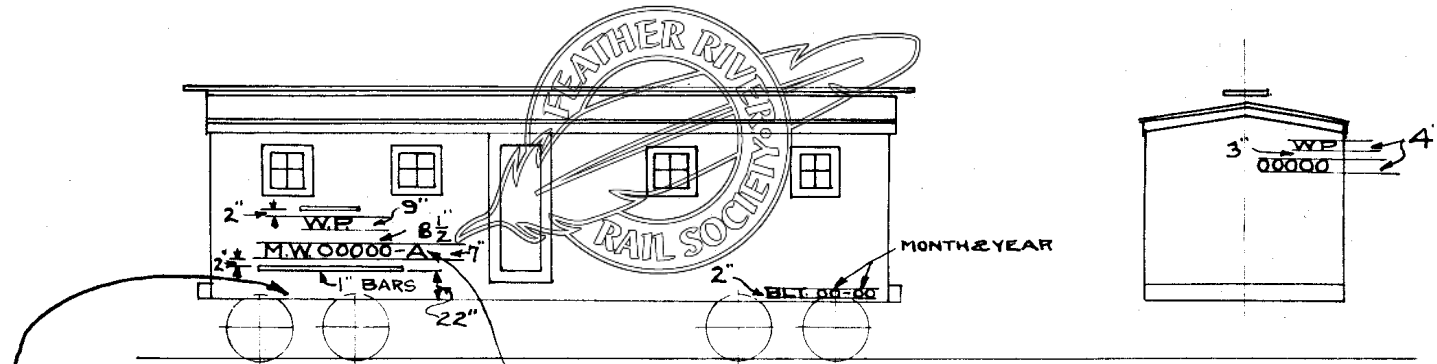
D C H H FOR 16 MEN, COOK & FOREMAN. CAN BE INCREASED TO 40 MEN BY ADDING 1 CAR "G" FOR DINER & 1 CAR "H" FOR EACH 8 MEN.

B F C G ADD ONE CAR "H" FOR EACH 8 MEN.
20-55 MAN OUTFIT

B G E G F ADD 1 CAR "H" FOR EACH 8 MEN
55 TO 80 OR MORE MAN OUTFIT ADD 1 CAR "G" FOR EACH 36 MEN OVER 80.
OVER 80 MEN ADD ONE CAR "H" FOR COOKS.

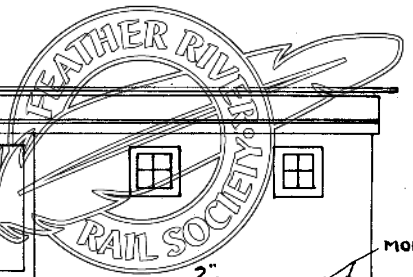
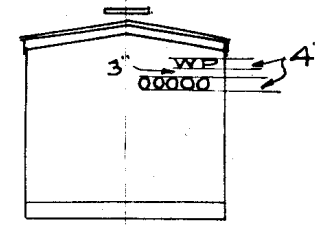


OUTFIT CAR STENCILING.



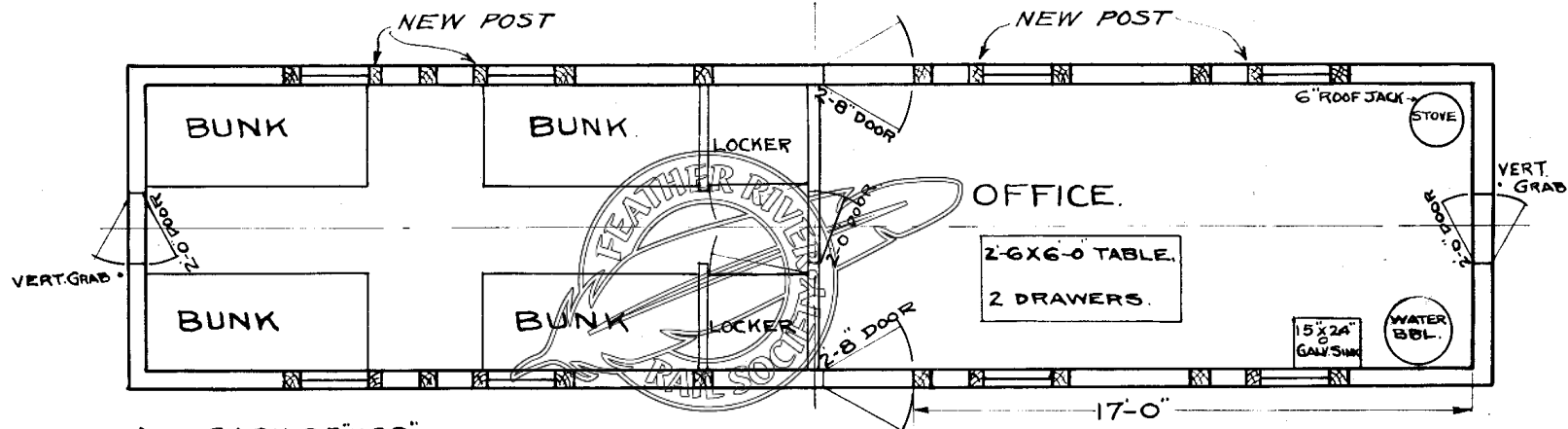
STATION SYMBOLS
 REPKD 06 06-00
 ABC ROAD
 1" LETTERS & SPACE

THIS LETTER TO SHOW TYPE OF CAR.
 REFER TO PAGES OF THIS BOOK FOR TYPE



OFFICE CAR

TYPE B.



ALL SASH 25"X29"
 WALLS & FLOOR AROUND STOVE LINED
 WITH OLD CAR ROOFING.
 APPLY 2 COATS GRAY PAINT INSIDE.
 T&G FLOORING LENGTHWISE, OFFICE ONLY
 T&G WALL LINING.
 SIDE DOOR SCREENS 2-8"X6-6"
 END DOOR SCREENS 2-0"X6-2"
 STEEL SIDE DOOR LADDERS.

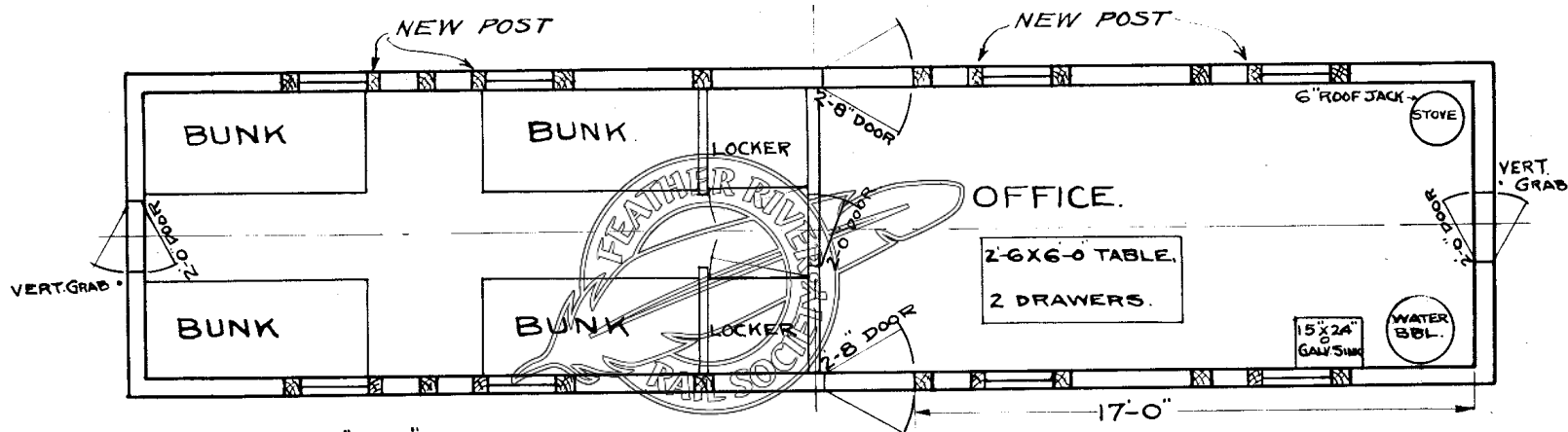
BOTTOM OF WINDOW FRAME OPENING
 38" ABOVE OLD FLOOR OF CAR

CAR INSIDE 8-6" WIDE 40-0" LONG.

SCALE $\frac{1}{2}$ " = 1 FT. C.S. 7-6-27.

OFFICE CAR

TYPE B.



ALL SASH 25" X 29"
 WALLS & FLOOR AROUND STOVE LINED
 WITH OLD CAR ROOFING.
 APPLY 2 COATS GRAY PAINT INSIDE.
 T&G FLOORING LENGTHWISE, OFFICE ONLY
 T&G WALL LINING.
 SIDE DOOR SCREENS 2'-8" X 6'-6".
 END DOOR SCREENS 2'-0" X 6'-2".
 STEEL SIDE DOOR LADDERS.

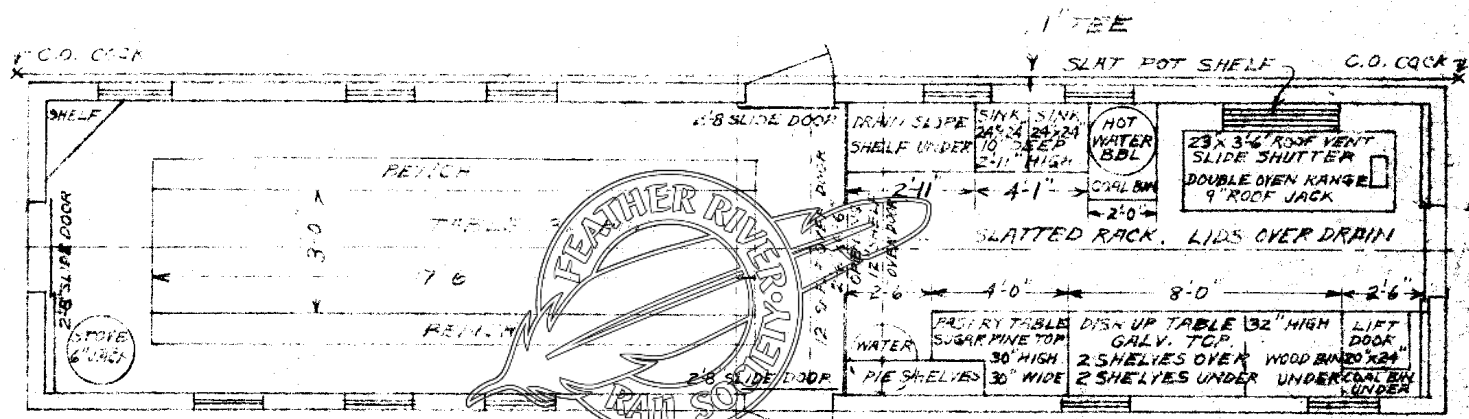
BOTTOM OF WINDOW FRAME OPENING
 38" ABOVE OLD FLOOR OF CAR

CAR INSIDE 8'-6" WIDE 40'-0" LONG.

SCALE $\frac{1}{4}$ " = 1 FT. C.S. 7.6.27.

KITCHEN & DINER

TYPE C



ALL SASH 25 X 24, BOTTOM 38 ABOVE FLOOR
 WALLS & FLOOR AROUND STOVE
 LINED WITH OLD CAR ROOMING
 APPLY 2 COAT GRAY PAINT INSIDE
 T&G FLOORING & WALL LINING
 STEEL WHEEL DOCK LADDER
 VERTICAL GRABS AT END DOORS
 2-8' X 6'-6" SLIDING FRAME DOOR SCREENS
 BOTTOM OF SINKS 24" ABOVE FLOOR
 2-8' X 6'-6" SIDE DOOR SCREENS
 CAR INSIDE 8-6' X 4'-6"

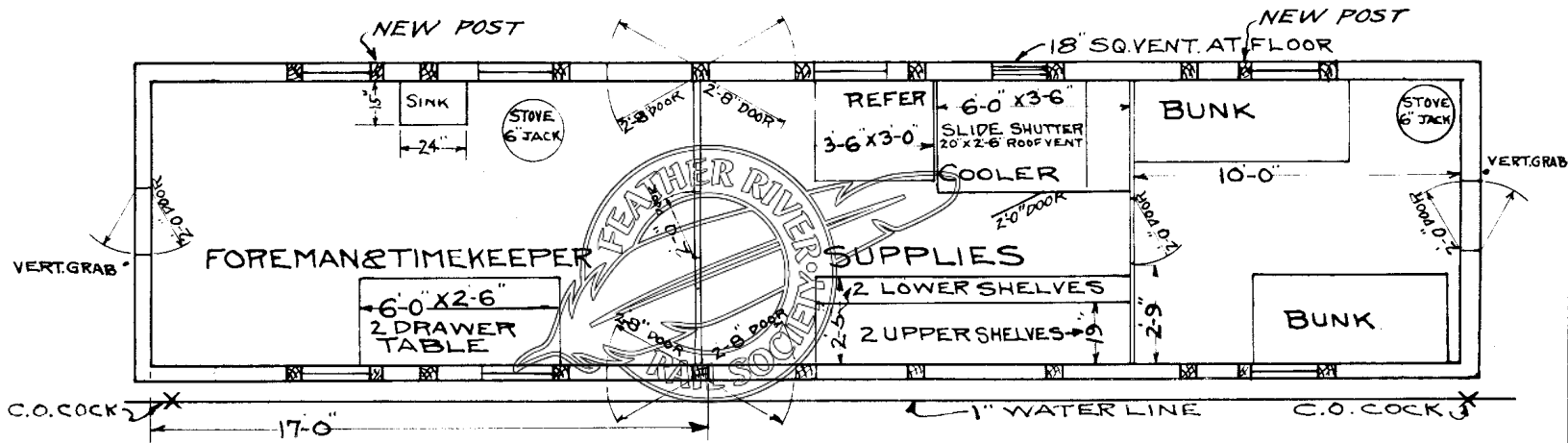
SHELVES OVER DOOR TO SLOPE BACK

WT. 47700⁰⁰

SCALE 1/4" = 1 FT. MWB 2-29-36

7-25-27.
2-29-28.
2-5-36

FOREMAN, TIMEKEEPER, COMMISSARY & COOKS' QUARTERS. TYPE D.



ALL SASH 25" X 29"
 WALLS & FLOOR AROUND STOVE LINED
 WITH OLD CAR ROOFING.
 APPLY 2 COATS GRAY PAINT INSIDE.
 ALL SHELVES S4S.
 T&G FLOORING LENGTHWISE.
 T&G WALL LINING.

2-8 X 6-6" SIDE SCREEN DOORS.
 2-0 X 6-2" END SCREEN DOORS.
 STEEL SIDE DOOR LADDERS
 BOTTOM OF WINDOW FRAME OPENING 38" ABOVE OLD FLOOR

CAR INSIDE 8'-6" WIDE 40'-0" LONG

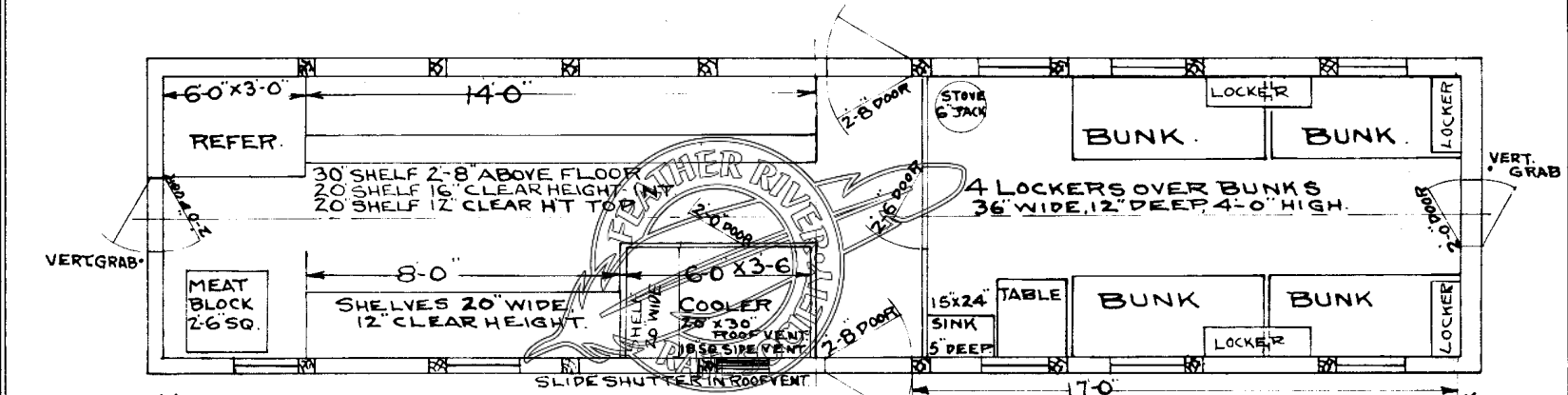
SCALE 1/4" = 1 FT.

C.S. 7-7-27.

1.25.27
3.25.27
1.29.28

SUPPLY & COOKS QUARTERS.

TYPE F



C.O. COCK → * ALL SASH 25" X 29"
 WALLS & FLOOR AROUND STOVE LINED
 WITH OLD CAR ROOFING.
 APPLY 2 COATS GRAY PAINT INSIDE.
 ALL SHELVES S4S
 T&G FLOOR LENGTHWISE.
 T&G WALL LINING.
 2'-8" X 6'-6" SIDE SCREEN DOORS.
 2'-0" X 6'-2" END SCREEN DOORS.
 STEEL SIDE DOOR LADDERS.

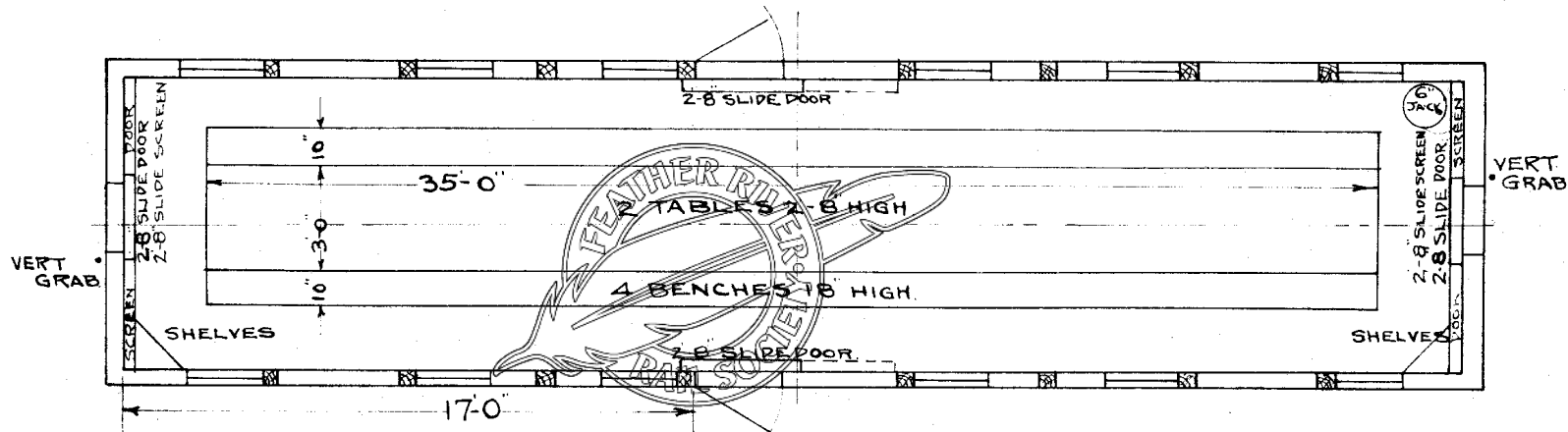
CAR INSIDE 8'-6" WIDE 40'-0" LONG.

SCALE 1/4" = 1 FT.

C.S. 7-8-27.

DINER.

TYPE G



ALL SASH 25" X 29"
 WALLS & FLOOR AROUND STOVE LINED
 WITH OLD CAR ROOFING.
 APPLY 2 COATS GRAY PAINT INSIDE.
 ALL SHELVES S4S.
 T&G FLOOR LENGTHWISE.
 T&G WALL LINING.
 2-8" X 6'-6" SCREEN DOORS.
 STEEL SIDE DOOR LADDERS
 END SCREEN DOORS SLIDE ON SAME TRACK AS DOOR.

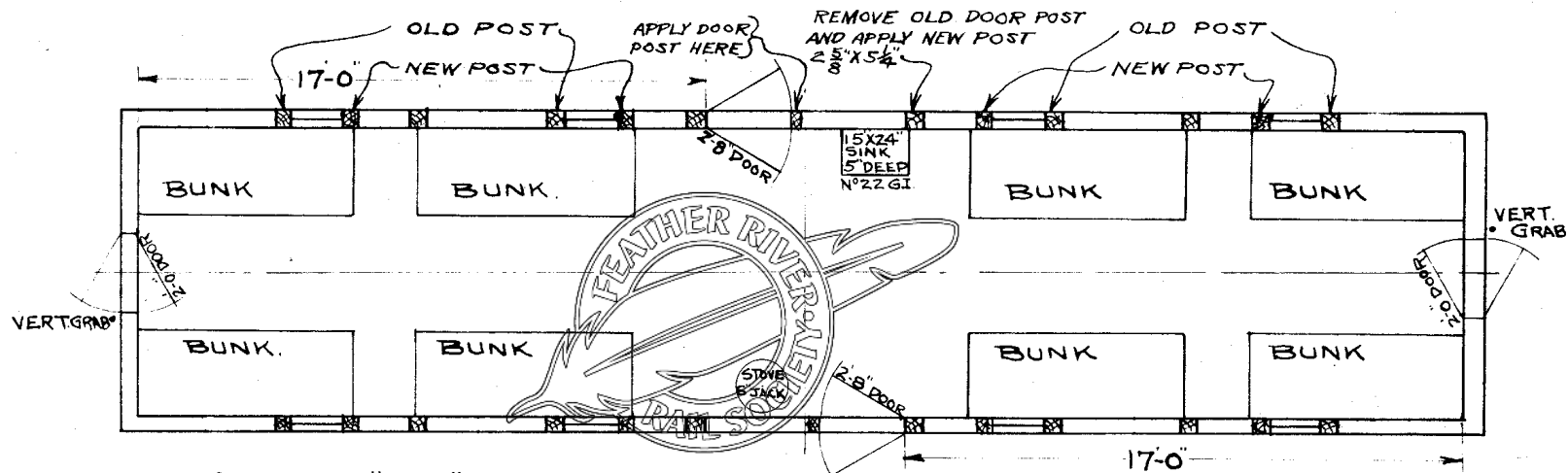
BOTTOM OF WINDOW FRAME OPENING 34" ABOVE OLD FLOOR

CAR INSIDE 8'-6" WIDE, 40'-0" LONG.

SCALE 1/4" = 1 FT. C.S. 7827.

BUNK CAR.

TYPE H



ALL SASH 25'X29"
 WALLS & FLOOR AROUND STOVE LINED
 WITH OLD CAR ROOFING.
 APPLY 2 COATS GRAY PAINT INSIDE.
 T&G WALL LINING.
 2-8' X 6-6' SIDE SCREEN DOORS.
 2-0' X 6-2' END SCREEN DOORS.
 STEEL SIDE DOOR LADDERS

BOTTOM OF WINDOW FRAME OPENING 34" ABOVE OLD FLOOR

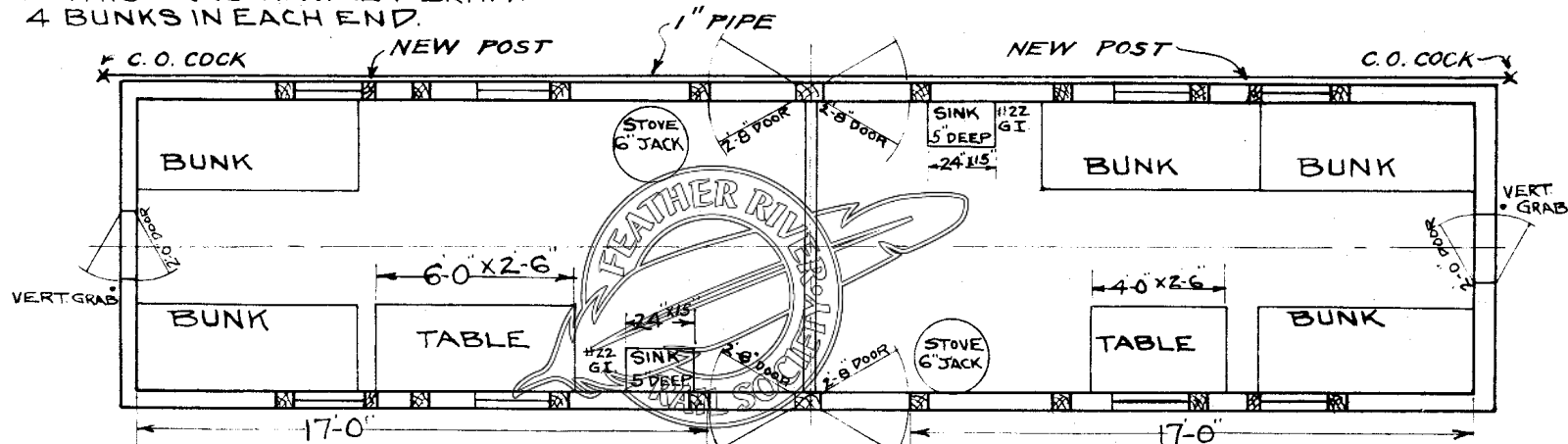
CAR INSIDE 8'-6" WIDE 40'-0" LONG.

SCALE $\frac{1}{4}$ " = 1 FT. CS. 6-8-27.

DIVIDED BUNK CAR. FOREMAN & ENGINE CREW.

TYPE J

NOTE:
THIS ARRGMT WILL PERMIT
4 BUNKS IN EACH END.



ALL SASH 25" X 29"
WALLS & FLOOR AROUND STOVES LINED
WITH OLD CAR ROOFING.
APPLY 2 COATS GRAY PAINT INSIDE.
1" x 6" FLOORING LENGTHWISE, OFFICE END ONLY.
1" x 6" WALL LINING.
2'-8" X 6'-6" SIDE DOOR SCREENS.
2'-0" X 6'-2" END DOOR SCREENS.
STEEL SIDE DOOR LADDERS.

BOTTOM OF WINDOW FRAME OPENING
34" ABOVE OLD FLOOR OF CAR

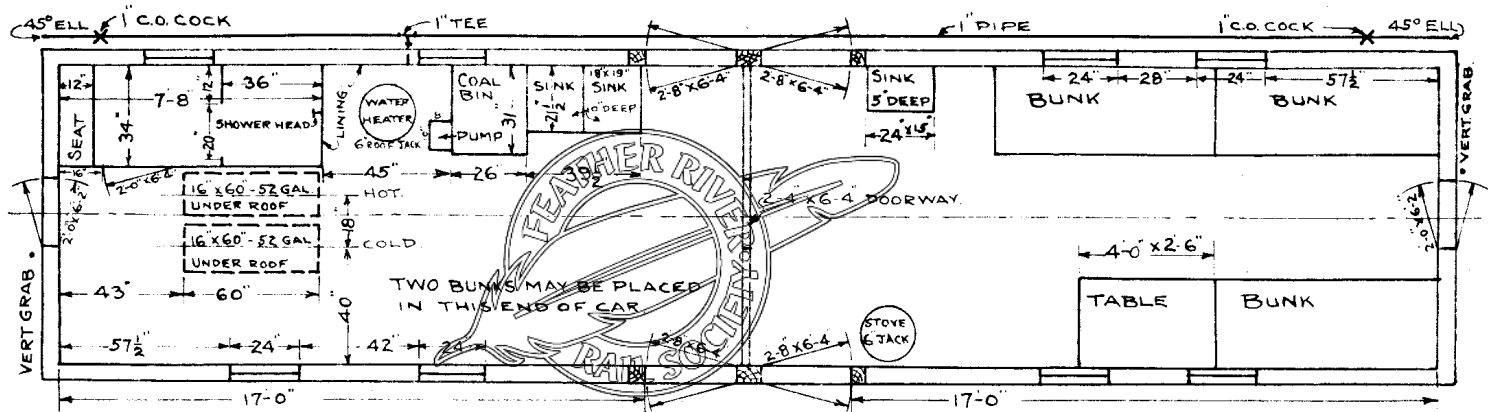
CAR INSIDE 8'-6" WIDE 40'-0" LONG.

SCALE $\frac{1}{4}$ " = 1 FT. CS. 7-9-27.

AFE. 67-39
 069-JB
 082-JB
 0100-JB
 0108-JB

DIVIDED BUNK CAR WITH SINGLE SHOWER STALL.

TYPE JB



ALL SASH 25" x 29" SLIDE UP.
 WALLS & FLOOR AROUND HEATER & STOVE LINED WITH OLD CAR ROOFING
 SHOWER STALL LINED WITH GALVANIZED IRON.
 T & G FLOORING LENGTHWISE. T & G WALL LINING
 2-8" x 6-8" SIDE DOOR SCREENS.
 2-0" x 6-2" END DOOR SCREENS.
 STEEL SIDE DOOR LADDERS
 BOTTOM OF WINDOW FRAME OPENING 34" ABOVE OLD FLOOR
 GRAY PAINT INSIDE.
 SHOWER ROOM WALLS EXTEND FROM FLOOR TO ROOF.

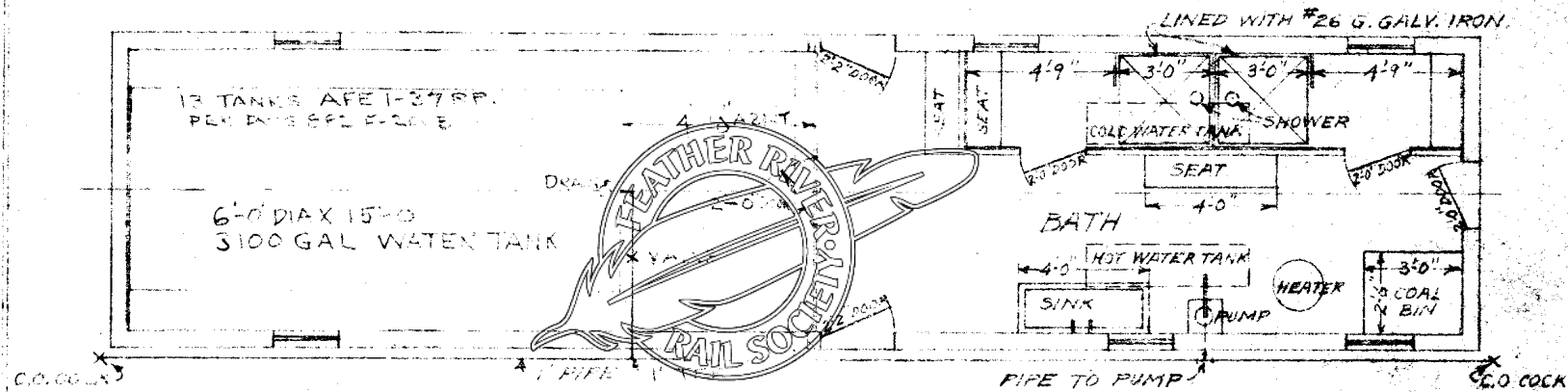
CAR INSIDE 8-6" WIDE & 40-0" LONG.

SCALE $\frac{1}{4}" = 1 FT$

7-12-39.

2 SHOWER BATH CAB
WITH WARE AND TOOL COMPARTMENT
(FROM OLD 15001 SERIES CAR)
SEE DWG. 423-F-900

TYPE K



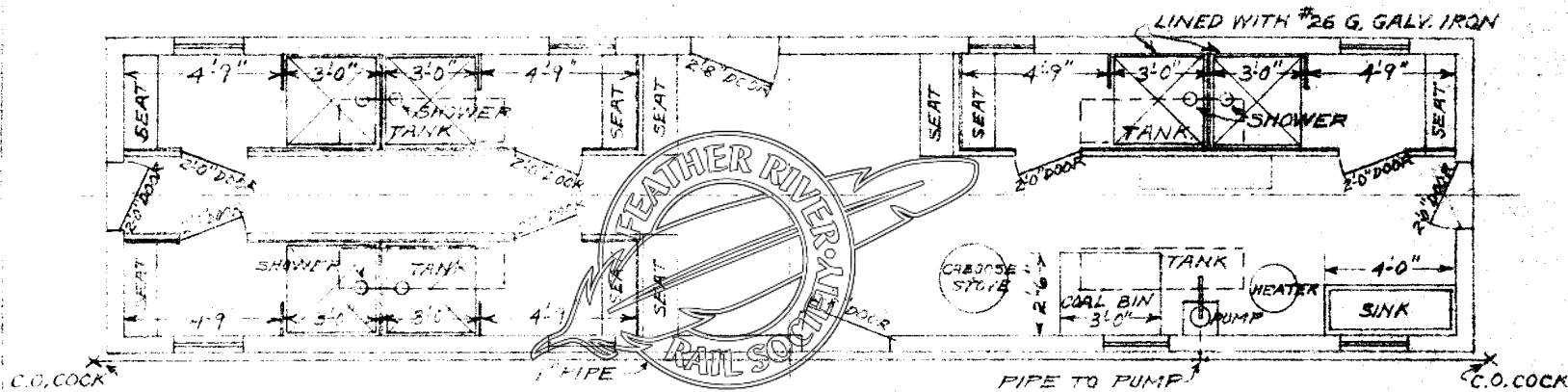
WALLS AND FLOOR AS SHOWN SHOULD
 BE LINED WITH OLD CAR FLOORING.
 APPLY 2 COATS GALV. PAINT INSIDE BATH AND
 ONE HOT & ONE COLD WATER 15" X 60" TANK ON ROOF
 HEATER, CRANE # 3520-03
 PUMP, DRAWING FIG. 513
 STEEL SIDE DOOR LADDERS
 VERTICAL SPARS AT SIDES OF END DOOR
 ALL CRN 25" X 29"
 CAR INSIDE 8-6 X 40-6"

SCALE 1/4" = 1 FT.

MYA 2-25-36

6" SHOWER BATH CAR
WITH TOOL COMPARTMENT.
(FROM OLD 15001 SERIES CAR)
SEE DW'G. 423-F-710

TYPE L



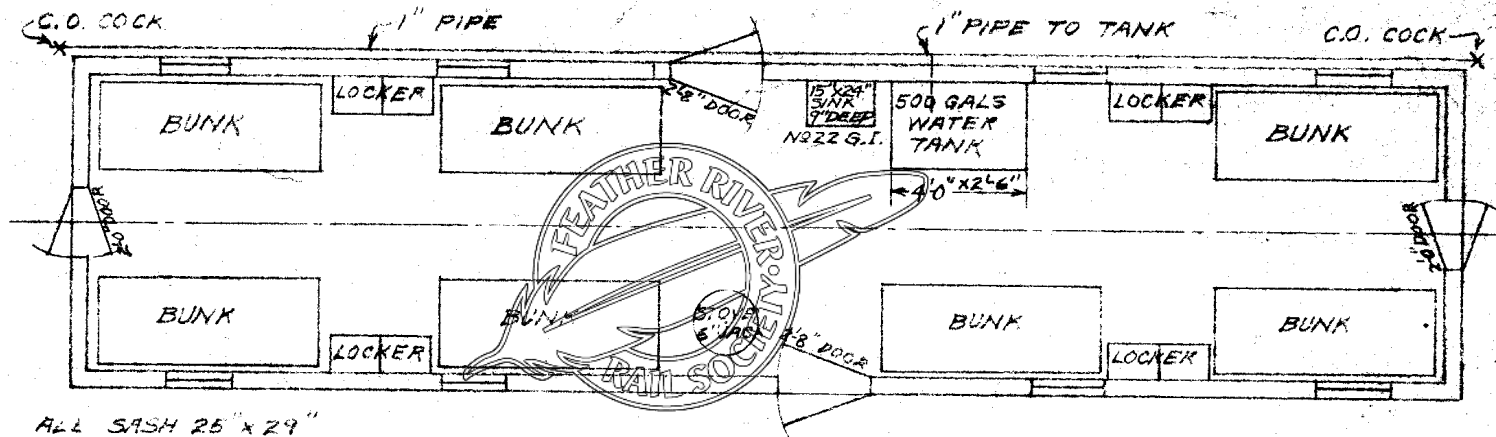
WALLS AND FLOOR AROUND STOVE
LINED WITH OLD CAR ROOFING.
APPLY 2 COATS GRAY PAINT INSIDE BATH END
TWO HOT & TWO COLD WATER 16" x 60" TANKS ON ROOF
HEATER, CRANE #38300-03
PUMP, DEMING FIG. 518
STEEL SIDE DOOR LADDERS
VERTICAL GRABS AT SIDES OF END DOORS
ALL SASH 25" x 29"
CAR INSIDE 8'-5" x 40'-6"

SCALE $\frac{1}{4}$ " = 1 FT.

MWB 2-25-36

BUNK CAR WITH 500 GAL. WATER TANK

TYPE N



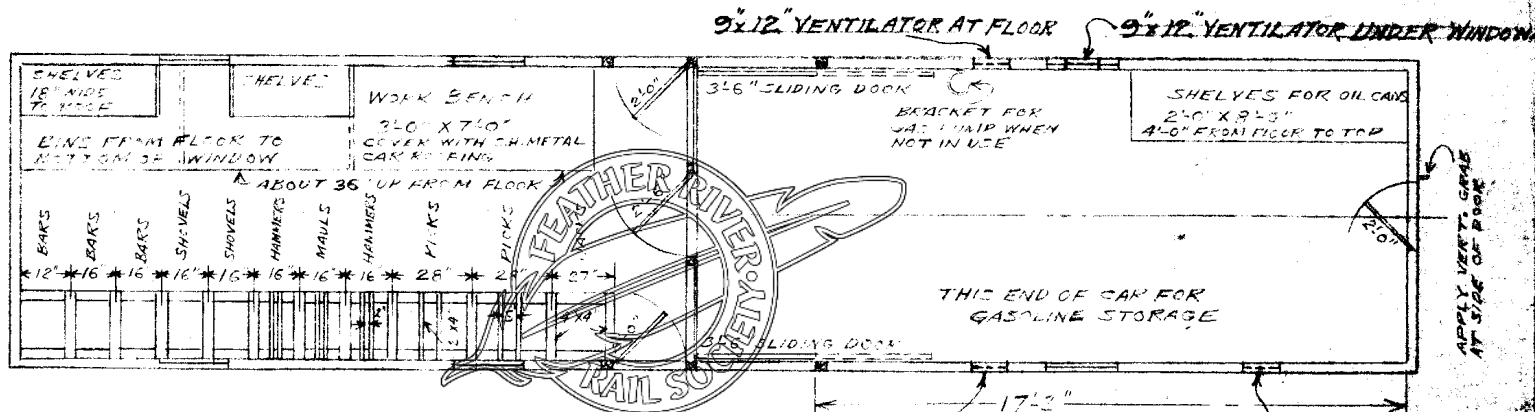
ALL SASH 25" x 29"
 WALLS & FLOOR AROUND STOVE
 LINED WITH OLD CAR ROOFING
 APPLY 2 COATS GRAY PAINT INSIDE
 7/8" FLOORING
 2'-8" x 6'-6" SIDE SCREEN DOORS
 2'-0" x 6'-2" END " "
 STEEL SIDE DOOR LADDERS
 STEEL BUNKS
 LOCKERS 36" x 12" x 6'-0" SHLF ABOVE, HOOKS BELOW
 CAR INSIDE 8'-6" x 40'-6"

SCALE $\frac{1}{4}'' = 1 \text{ FT}$ MKB 2-26-36

TOOL CARS FOR DITCHERS 49 & 50

TYPE ST

MM-7763-1944
 CAR NOS. MW 0727-ST
 MW 0728-ST



ALL SASH 25" X 29", TO BE COVERED WITH NETTING
 STEPS UNDER SIDE DOORS FULL LENGTH
 T&G FLOORING LENGTHWISE OF CAR
 ONE VENT EACH SIDE OF CAR IN GAS STORAGE END
 WOOD ROOF COVERED WITH ROOFING PAPER
 APPLY 2 COATS GRAY PAINT INSIDE

APPLY 9"x12" VENTILATORS AT
 TOP OF FLOOR TO CARRY AWAY GAS FUMES

COVER WITH WIRE NETTING.

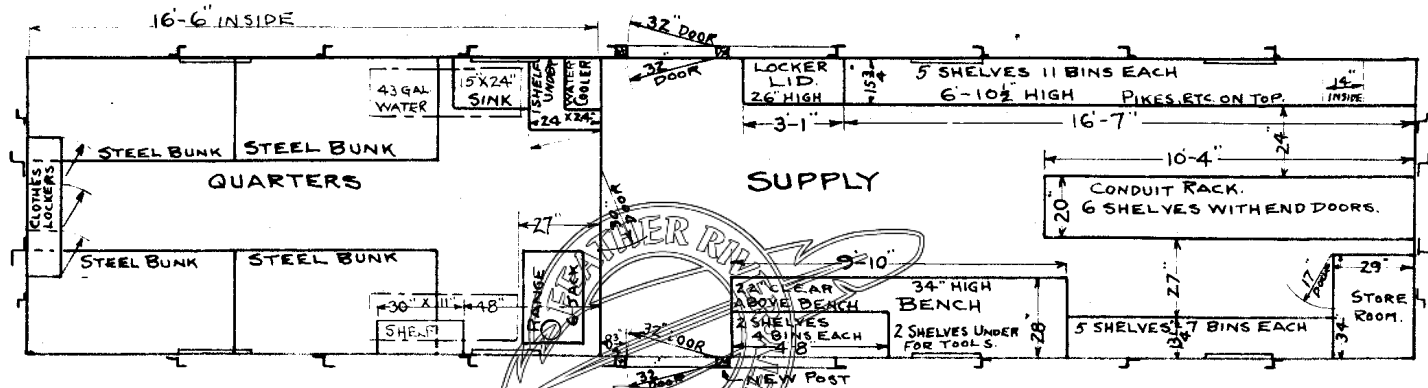
CAR FROM 15000 SERIES
 CAR INSIDE 70'-6" WIDTH 8'-6"

SCALE $\frac{1}{4} = 1$ FT LW.W. 2-7-41

ELECTRICIANS SUPPLY & QUARTERS

CAR 0580X

X-1



DOUBLE SHEATHED ROOF.
 FLOOR, SIDE & END WALLS T&G LINED
 8 25" X 29" CABOOSE SASH
 12" X 18" X 34" STD. WATER COOLER.
 N°4 MIDWEST RANGE.
 ALL BINS HAVE DOORS.
 DOUBLE LINING AROUND RANGE - $\frac{1}{8}$ " ASBESTOS & $\frac{3}{32}$ " IRON
 3 COMPARTMENT CLOTHES LOCKER - 48" WIDE 12" DEEP 47" HIGH.
 MADE FROM 15001 SERIES BOX CAR.
 2 - 16" X 50" COPPER WATER TANKS HUNG FROM ROOF CAR LINES

WATER TANKS FILLED THROUGH ROOF.
 FAUCET AT SINK PIPED TO BOTH TANKS
 TOP OF BENCH LINED WITH $\frac{3}{32}$ IRON.
 2-8" X 6-6" SIDE SCREEN DOORS.
 STEEL SIDE DOOR LADDERS.
 APPLY TWO COATS GRAY PAINT INSIDE

