

FEATHER RIVER RAIL SOCIETY

DATE: October 2017
ITEM: New Business 2 – Fall Fundraising Mailer
FROM: Eugene Vicknair

Included with this report are the draft documents for the Fall Fundraising Mailer.

They consist of a 2 sided letter to be printed black and white and the donation / payment envelope.

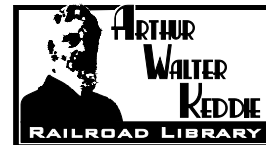
I will be adjusting the convention dates based on which are decided on.

Cost to print, stuff and mail the fundraiser to our membership will be about \$1,100. I would like to have this to the printer by end of October or earlier.

I also intend to do another Business Sponsorship Mailing and have this one be followed up with phone calls from our store staff, as was planned for last year's mailing.

Due to the small number, I expect cost will be less than \$200 for the Sponsorship mailing.

I would like Board approval for the expenditure of no more than \$1,400 for fundraising mailings. This would be from line item 56600 – Fundraising Expense. 2017 Budget for this line item is \$2,000 of which none has been spent to date.



FEATHER RIVER RAIL SOCIETY

700 Western Pacific Way • P O Box 608 • Portola, CA 96122 • museum 530.832.4131 • fax 530.832.1854 • www.WPLives.org

October 21, 2017

Dear FRRS Member,

A series of events served to raise the profile of the Society in 2017, and our crews also worked very hard to repair and improve the facility and our operating equipment, a tremendous challenge consider what Winter handed to us.

The winter of 2016-2017 was brutal for the local community and the museum. We suffered serious damage to our entry road and to the balloon track, damage so severe that some of the railroad was out of service until mid summer. However, our volunteers stepped up and got the railroad shaped up. We also got the road patched with some help from the City of Portola.

While we have applied to FEMA and the state Office of Emergency Services for disaster funds, those will be a while in coming, so we had to handle the costs ourselves for now.

However, projects keep rolling. WP 165 is coming along nicely and with paint now on parts of the engine and equipment being remounted, she look spectacular. Our excellent restoration crew should be very proud of themselves.

Our mechanical department has been going through both our locomotives and our rubber tired equipment and getting things into running order. A series of radiator repairs for a few engines, including WP SW1500 1503, are in the works as well as swapping in some new traction motors.

We continue to expand and improve our archives and move toward sharing more of them with the public. Our Archives Department is scanning materials and working on the Archives Research Room being built in the former Missouri Pacific baggage car that was donated to us several years ago. That car has replaced the WP MoW baggage car alongside the loading dock and it is now getting the electrical system repaired and rebuilt.

We are expanding our capabilities for events and adding capacity to our excursion trains, as well as planning our next restoration and painting projects.

Your support makes all this possible. Please give generously to the FRRS and help us make 2018 an even bigger and better year! On behalf of the Feather River Rail Society's Board of Directors, we thank you in advance for your continued support. The WP Lives thanks to YOU!

Wishing you all the best,

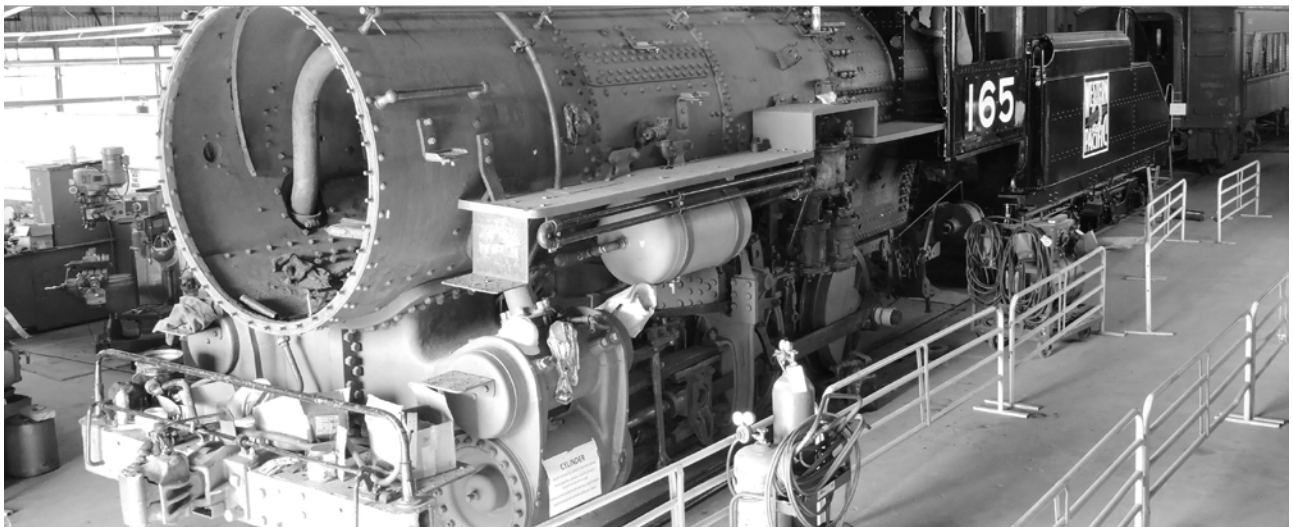
Eugene Vicknair
Director and Funding Department
Feather River Rail Society

Steve Habeck
President
Feather River Rail Society

As a 501c(3) non-profit supported primarily by the donations of its visitors and members, we depend on your contributions to continue our preservation, research and restoration programs. Donations may be tax deductible, please ask you tax professional.

Also, we are always looking for volunteers to help move our programs forward. And you don't even need to come to Portola. From your home you can write for our Headlight magazine, help coordinate special events, raise money for the Society or help with historical research.

We're also looking for people to help with our facilities improvements, mechanical work, operations, reporting events to the members, cataloging our archives and assisting with all the other items that keep a historic organization such as ours in operation.



Western Pacific 0-6-0 steam locomotive 165 following the fall Work Session. *Photo by Bob Sims*

WP 165 is getting close to steaming! Our goal is end of summer 2018. Look for more information in the Train Sheet and on our Facebook page, including a big fundraising dinner in May 2018!

Look for info on the 2018 Western Pacific Historic Convention coming soon!

April 26-29, 2018 (Thur – Sun) in Salt Lake City, Utah with speaker **Steve Lee**, former head of Union Pacific's Steam Locomotive Program and Heritage Ops

Light The Fire! Fundraising Dinner for WP 165 on Sat, May 12, 2018
BBQ Buffet Dinner with speakers Steve Lee and SP 4449's Doyle McCormack
6 to 9 PM at the Museum – go to <http://steam.wplives.org> for more info – seating limited

Thank you to our members for your amazing support of the Feather River Rail Society and our mission to preserve the legacy of the Western Pacific and its people.



PLACE
STAMP
HERE

Feather River Rail Society

2017 Fall Fundraiser

P. O. Box 608

Portola, California 96122

Please fill out the donation form below. Your donation may be tax deductible. Please consult your tax professional. FRRS Tax ID Number: 68-0002774. For any questions, comments, information, or assistance offers, please contact:

Eugene Vicknair • phone: 530.832.4131 • e-mail: funding@wplives.org

YES! I want to support the FRRS! I am making a...

- | | | |
|---|--|---|
| <input type="checkbox"/> \$30 donation | <input type="checkbox"/> \$50 donation | <input type="checkbox"/> \$100 donation |
| <input type="checkbox"/> \$150 donation | <input type="checkbox"/> \$200 donation | <input type="checkbox"/> \$350 donation |
| <input type="checkbox"/> \$500 donation | <input type="checkbox"/> \$1000 donation | <input type="checkbox"/> \$_____ |

Please enclose check to FRRS. You can also donate on-line at donate.WPLives.org.

NAME

ADDRESS

CITY

STATE

ZIP

E-MAIL

PHONE

To donate or pledge by credit card, please provide the following information...

CARD NUMBER and TYPE

BILLING ZIP

EXP

CCV

We accept monthly pledges! I pledge \$ _____ per month for _____ months

SIGNATURE
