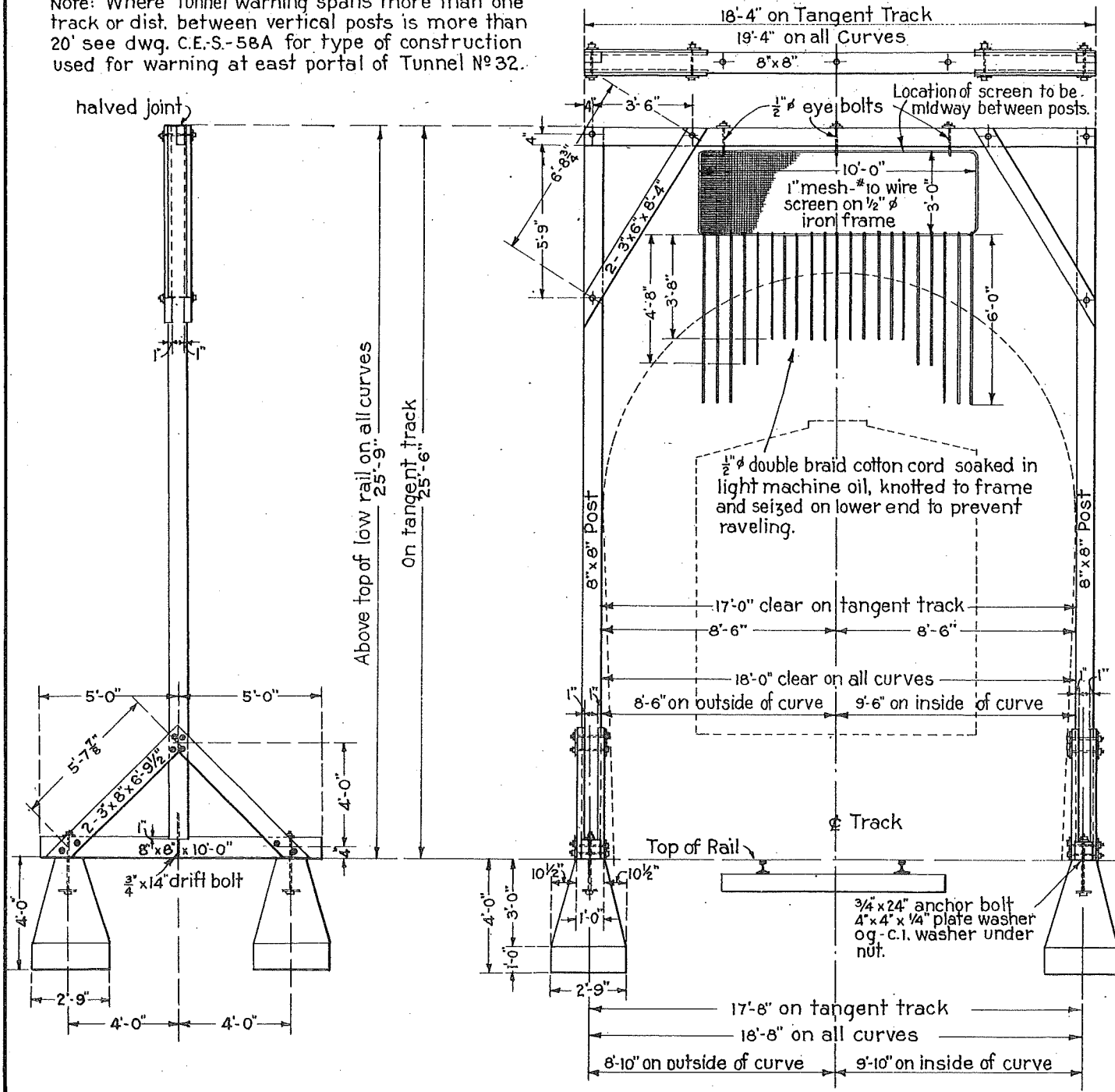


Note: Where tunnel warning spans more than one track or dist. between vertical posts is more than 20' see dwg. C.E.S-58A for type of construction used for warning at east portal of Tunnel No 32.



NOTES:

All bolts in frame to be 5/8" ϕ with cut washers. Screen to be Galvanized after manufacture. Bolts to be Sherardized. Eye bolts to be 10" long outside of eye and are to be forged around screen frame. LOCATION: Warnings shall be placed at each end of and 200 feet in advance of structures having an overhead clearance of less than 22 feet above top of rail. Distances of more or less than 200 feet may be used only by authority of the General Manager.

BILL OF MATERIAL			
2	8" x 8" x 10'-0"		4 anchor bolts 3/4" x 24"
1	" x 18'-4"	on tang. tr.	24 bolts 5/8" x 13"
1	" x 19'-4"	on curve tr.	4 anchor pls. 4" x 1/4" x 4"
2	" x 25'-7"	on tang. tr.	2 drift bolts 3/4" x 14"
2	" x 25'-10"	on curve tr.	3 1/2" C.I. og washers
4	3" x 6" x 8'-4"		52 5/8" cut washers
8	3" x 8" x 6'-9 1/2"		4 3/4" C.I. og washers
3	eye bolts 1/2" x 10"		100 lin. ft. 1/2" ϕ cotton cord
2	bolts 5/8" x 9"		1 Screen & frame 3'-0" x 10'-0"

APPROVED: *J. M. Mason*
CHIEF ENGINEER.

APPROVED: *J. M. Mason*
VICE-PRESIDENT AND GENERAL MANAGER.

THE WESTERN PACIFIC RAILROAD CO.
STANDARD

BRIDGE AND TUNNEL WARNING

SCALE: 3/16" = 1'-0"

ADOPTED JAN. 1930
REVISED FEB. 18, 1938