

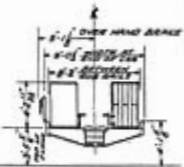
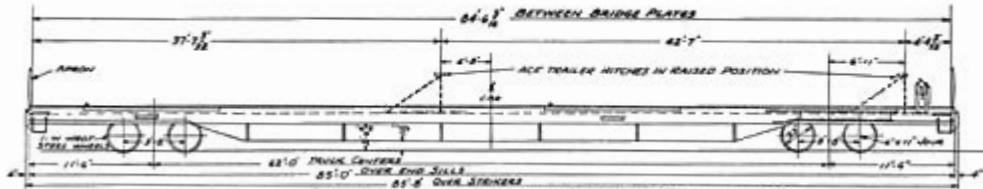


BUILDERS LOT 8485

TRAILER-ON-FLAT CARS CLASS FC  
 BUILT BY PULLMAN STANDARD APRIL 1959  
 AFE 95-59

CAR NOS. 1701-1725  
 NO. OF CARS 25

REVISED  
 1-17-62



ACF A-3 RIDE CONTROL TRUCKS  
 W/ MINER FR-19 RUBBER DRAFT GEARS  
 PINKEN AP ROLLER BEARINGS

CAPACITY 13500 LBS

WEIGHT - BODY 54260  
 TRUCKS 16440  
 TOTAL 70700 LBS

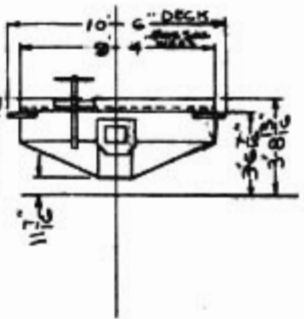
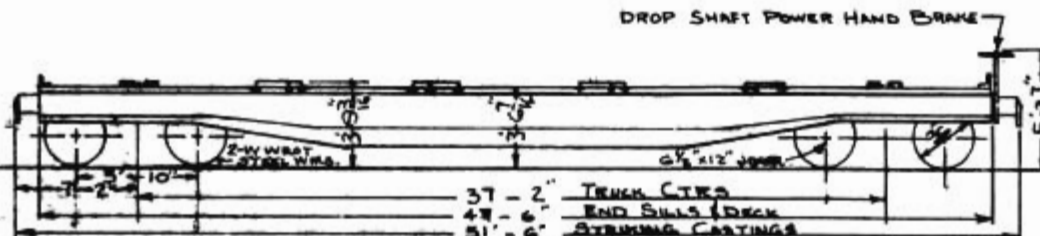
AFE 1749

TITAN MISSILE FLAT CARS CLASS FG  
BUILT BY GUNDERSON BROS. ENGR CORP. 1964  
AFE-97-64

CAR NOS 1811-1815  
NO. OF CARS-5

HYDRA-CUSHION, 20" TRAVEL

REV. 6-28-66  
1-16-68



BARBER 3-2-C STABILIZED TRUCKS  
WAUGHNEY CUSHION TYPE CG-3 SHOCK SPRING  
THICKEN AIR ROLLER BEARINGS  
WADCO PAC BRAKES, V-441 COBRA BRAKE SHOES

37 - 2" TRUCK CTRS  
4' - 6" END SILLS / DECK  
51' - 6" STRIKING CASTINGS

CAPACITY 195000 LBS | WEIGHT-BODY TRUCKS  
TOTAL 66,500

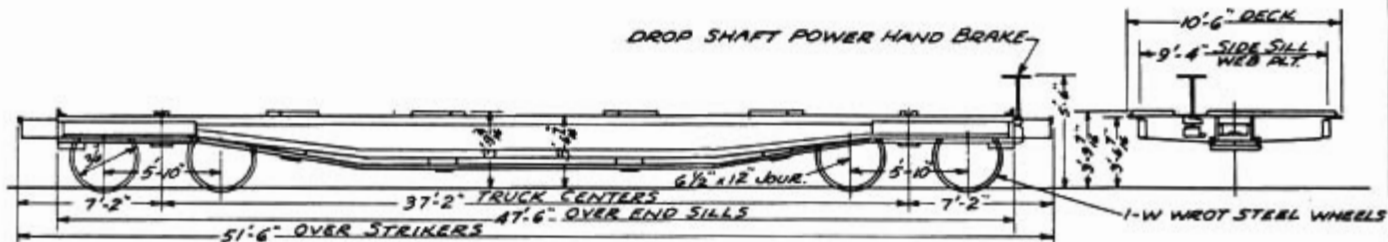
1/18 12-17-64

TITIAN MISSILE FLAT CARS, CLASS FG  
 BUILT BY THRALL CAR MFG. CO. MAY 1965  
 AFE 14-65

CAR NOS 1816-1818  
 NO OF CARS 3

REV. 7-16-68

HYDRA-CUSHION, 20" TRAVEL



WABCO PAC BRAKES, V-141 COBRA BRAKE SHOES  
 WAUGHMAT CUSHION TYPE CG-5 DRAFT GEAR  
 ASF A-3 RIDE CONTROL TRUCKS  
 TIMKEN AP ROLLER BEARINGS

CAPACITY

195,000 LBS

WEIGHT-BODY 44920  
 TRUCKS 20280  
 TOTAL 65200

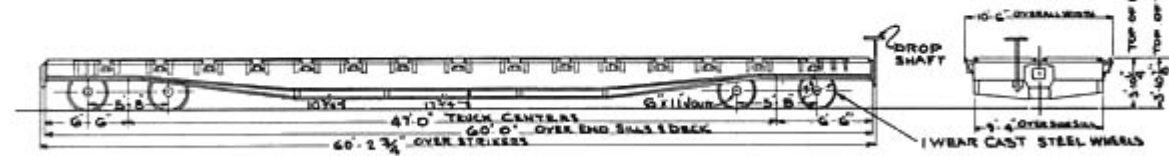
RWC 6-30-66

**FLAT CARS CLASS FMS**  
 BUILT BY GUNDERSON ENGINEERING CORP. 1964  
 AFE 135-64

CAR NOS. 1841-1850  
 NO. OF CARS - 10  
 CAR NO. 2160  
 NO. OF CARS - 1

REV. 8-12-66  
 1-23-68

CARS EQUIPPED WITH BRANDON LADING DEVICE



NATIONAL CASTING TYPE C-1 TRUCKS  
 FREIGHTMASTER CUSHION DRAFT GEAR, 10" TORQUE  
 HYATT ROLLER BEARINGS

CAPACITY 140,000 LBS.

WEIGHT-BODY	48 000
" TRUCKS	17 500
<b>TOTAL</b>	<b>65 500</b>

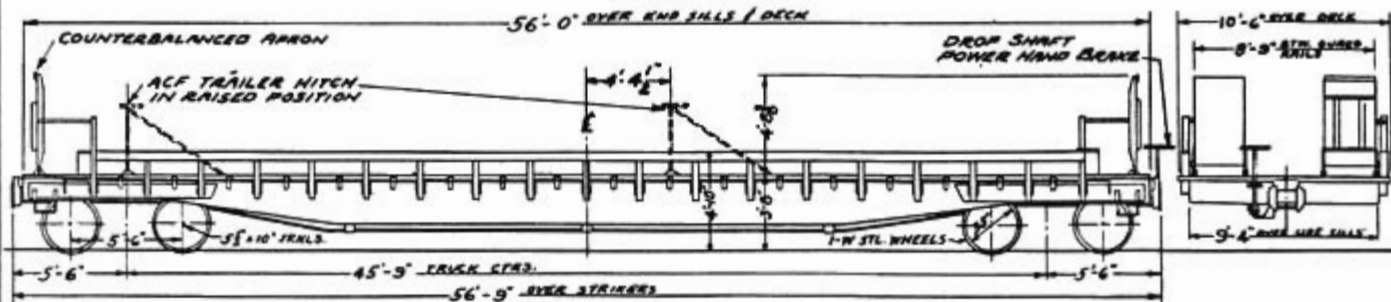
JCB 3/8/68

TRAILER-ON-FLAT CAR, CLASS FC  
 CONVERTED FROM 2001-2050 SERIES  
 CARS BY W.P.R.R. AFE 113-55

CAR Nos. 1902-1910  
 No. OF CARS - 9

CARS 1902, 1906, 1908, 1910 EACH HAVE 2 TRAILER HITCHES-WT. 67600 LBS.  
 REMAINDER HAVE 1 TRAILER HITCH EACH-WT. 65100 LBS. APPLIED AFE 45-59

REVISED:  
 3-24-60  
 3-30-62



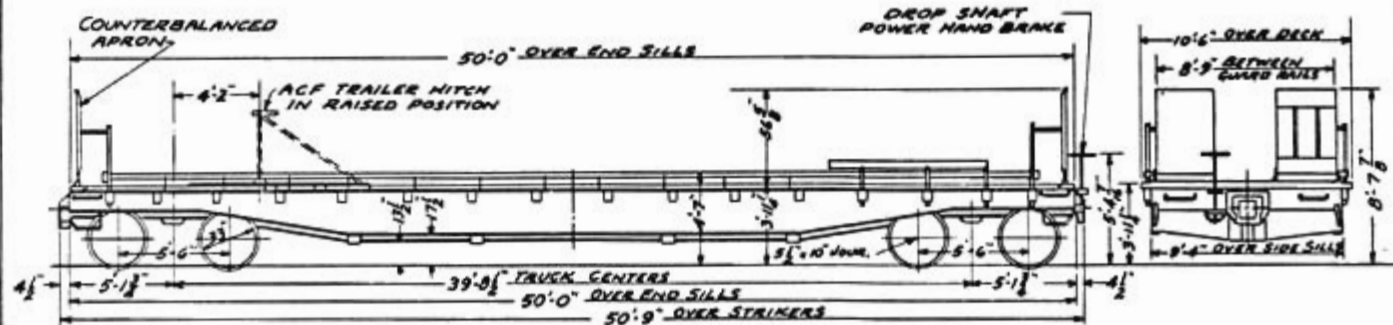
A.S.F. SPRING PLANKLESS TYPE A-3 RIDE CONTROL TRUCK  
 WAUGH DRAFT GEAR TYPE #420  
 TIMKEN AP ROLLER BEARINGS

CAPACITY — 10000 LBS.  
 " — 2-24' TRLRS.  
 " — 1-35' TRLRS.

WEIGHT - BODY  
 TRUCKS 14590  
 TOTAL: SEE ABOVE.

TRAILER-ON-FLAT CAR, CLASS FC  
 CONVERTED FROM 2701-2802 SERIES CARS  
 BY WPRR AFE 45-59

CAR Nos. 1926-1941  
 No. OF CARS 16



ANDREWS TRUCK SIDE FRAMES  
 CARDWELL WESTINGHOUSE DRAFT GEAR NY-11-F  
 AAR FRICTION BEARINGS

CAPACITY --- 100000 LBS

WEIGHT-BODY  
 TRUCKS  
 TOTAL 51600 LBS.

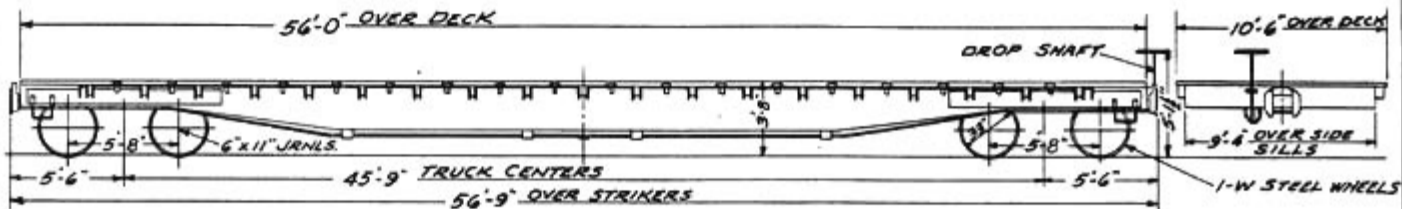
BUILDER'S LOT NR NONE

FLAT CARS, CLASS FM  
 BUILT BY THRALL CAR MFG. CO. NOV. 1960  
 AFE 77-60

CAR NOS 2101-2150  
 NR OF CARS 5

## NOTE:

CARS 2101-2140 EQUIPPED WITH TIMKEN AP ROLLER BEARINGS.  
 CARS 2141-2150 EQUIPPED WITH SKF ROLLER BEARINGS.



BARBER 5-2-C STABILIZED TRUCKS  
 CARDWELL-WEST. TYPE NY-11-F DRAFT GEARS  
 ROLLER BEARINGS - SEE NOTE

CAPACITY	140 000 LBS.	WEIGHT - BODY	43660
		TRUCKS	16440
		TOTAL	60100

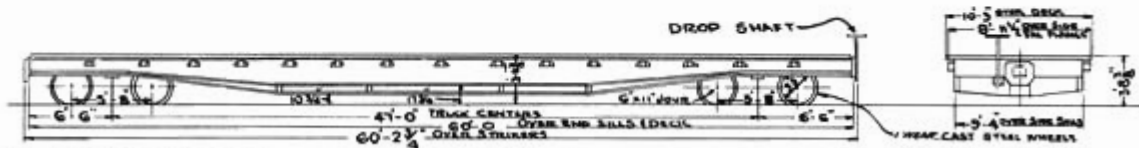
RWC 10-6-60



CAR NOS. 2151-2159  
 ORIG. NO. OF CARS 9

FLAT CARS  
 BUILT BY GUNDERSON ENGINEERING CORP 1964  
 AFE 135-64

2151-2155 CLASS FMS, 2156-2159 CLASS FM



NATIONAL CASTING TYPE C-1 TRUCKS  
 FREIGHTMASTER CUSHION DRAFT GEAR, 10" TRAVEL  
 HYATT ROLLER BEARINGS

CAPACITY 140,000 LBS.

WEIGHT-BODY	42 200
" TRUCKS	17 500
" TOTAL	59 700

JCS 3-30-65

BUILDER: ORDER NO. 45024

FLAT CARS  
 CARS 2161-2166 CLASS FMS  
 CARS 2167-2175 CLASS FM  
 BUILT BY ST. PAUL FOUNDRY & MFG. CO. 1967  
 AFE 72-67

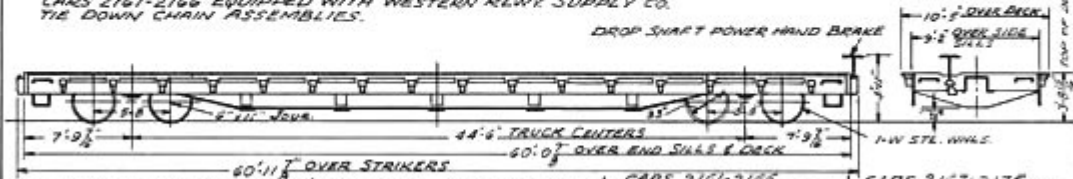
CAR NOS. 2161-2175  
 NO. OF CARS 15

EQUIPPED WITH APEX RLWK. PRODUCTS CO.  
 MODEL E12-2J HYDRA-BUFF CUSHIONING, 12" TRAVEL

ROLLER BEARINGS: 2161-2170 TIMKEN, 2171-2175 BRENCO

CARS 2161-2166 EQUIPPED WITH WESTERN RLWK. SUPPLY CO.  
 TIE DOWN CHAIN ASSEMBLIES.

DROP SHAFT POWER HAND BRAKE



ASF A-3 RIDE CONTROL TRUCKS  
 ROLLER BEARINGS-SEE ABOVE

CAPACITY 160,000 LBS.

CARS 2161-2166  
 WEIGHT-BODY 42260  
 TRUCKS 16440  
 TOTAL 58700

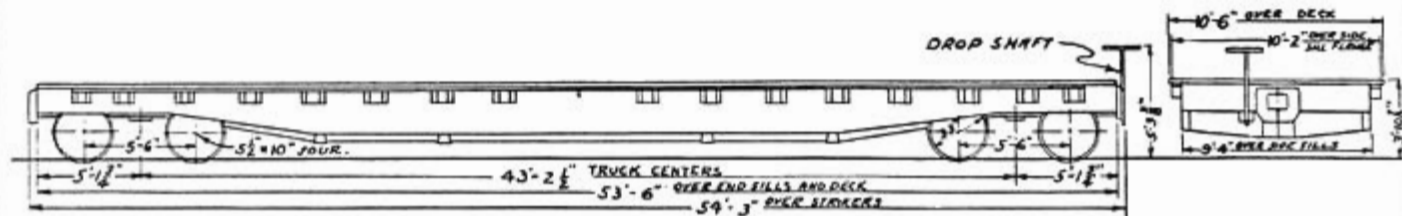
CARS 2167-2175  
 WEIGHT-BODY 41260  
 TRUCKS 16440  
 TOTAL 57700

RWC 7-18-67

## FLAT CARS, CLASS FM

CAR Nos. 2201-2224  
ORIG. No. OF CARS - 24CARS 2211, 2216, 2221, 2224 EQUIPPED FOR HANDLING  
CHEVROLET K.D. FRAMES AFE 65-63CARS 2212, 2219, 2220 EQUIPPED FOR HANDLING CHEVROLET  
HEAVY DUTY FRAME BARS & HAD HYDRA-BUFF APPLIED AFE 66-63  
DISTANCE OVER STRIKERS 58'-5½", 12" TRAVEL.

## NOTE:

THESE CARS CONVERTED FROM  
FLAT CARS IN 2401-2700 SERIES.REVISED:  
3-30-60  
11-9-61  
4-30-63  
1-24-68

SCULLIN STEEL Co. SPRING PLANKLESS SIDE FRAME TRUCKS	CAPACITY - 100000 LBS.	WEIGHT - BODY 37410
MINER DRAFT GEAR CLASS A-22-XB		TRUCKS 14590
AAR FRICTION BEARINGS		TOTAL 52000 LBS.

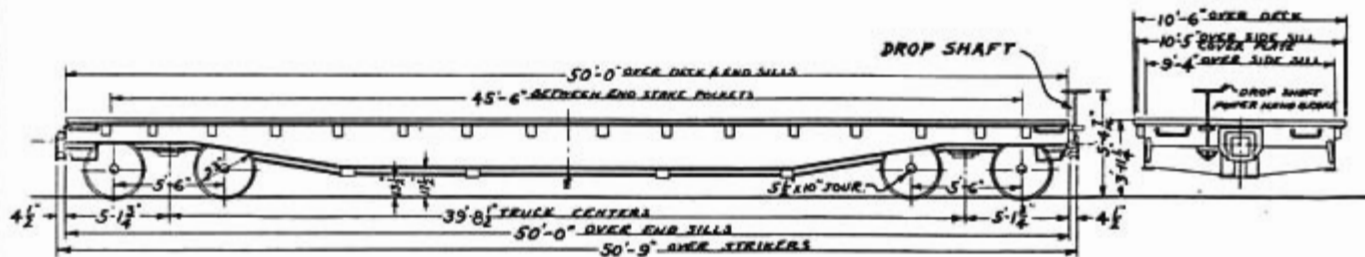




FLAT CARS, CLASS FM  
BUILT BY W.P.R.R. NOV. - DEC. 1953  
RFE 157-53

CAR Nos. 2701 - 2802  
ORIG No. CARS - 102

REVISED:  
3-28-60



ANDREWS TRUCK SIDE FRAMES  
CARDWELL-WESTINGHOUSE TYPE NY-II-F DRAFT GEAR  
AAR FRICTION BEARINGS

CAPACITY	100,000 LBS.	WEIGHT - BODY	
		TRUCKS	
		TOTAL	45,900 LBS.

KOC 8-9-53







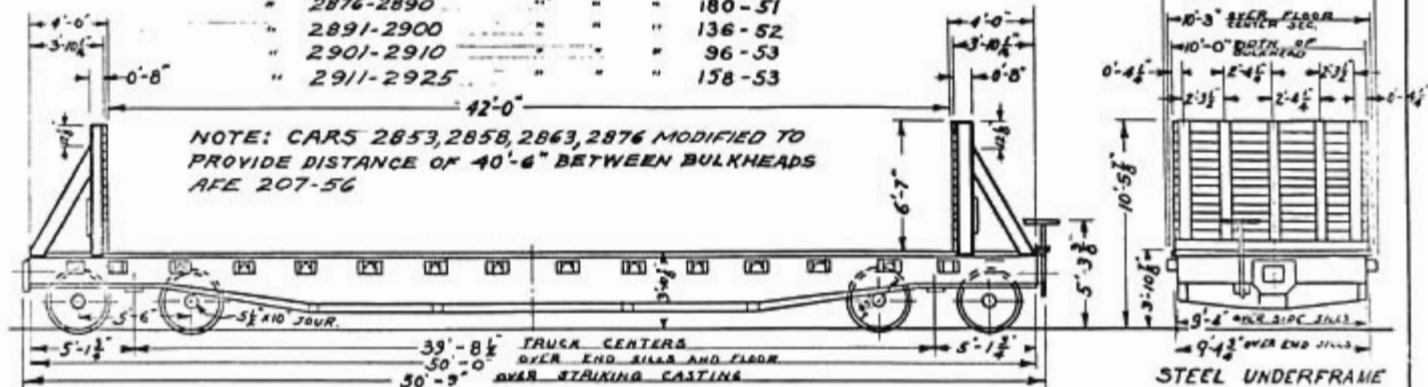
BULKHEAD FLAT CARS, CLASS FMS  
 CONVERTED FROM FLAT SERIES 2401-2700  
 BY W.P.R.R.

CAR Nos. 2851-2925  
 ORIG. NO. CARS - 75

CARS 2851-2875 CONVERTED ON A.F.E. 72-50

" 2876-2890	" " "	180-51
" 2891-2900	" " "	136-52
" 2901-2910	" " "	96-53
" 2911-2925	" " "	158-53

NOTE: CARS 2853, 2858, 2863, 2876 MODIFIED TO  
 PROVIDE DISTANCE OF 40'-6" BETWEEN BULKHEADS  
 AFE 207-56



BARBER S-2 TRUCKS  
 MINER DRAFT GEAR CLASS A-22-XB  
 AAR FRICTION BEARINGS

CAPACITY - - - 100,000 LBS. WEIGHT - BODY 33410  
 TRUCKS 14590  
 TOTAL - 48,000 LBS

REVISED:  
 7-10-53  
 10-22-53  
 4-7-55  
 3-29-60  
 1-24-68

## BULKHEAD FLAT CARS, CLASS FMS

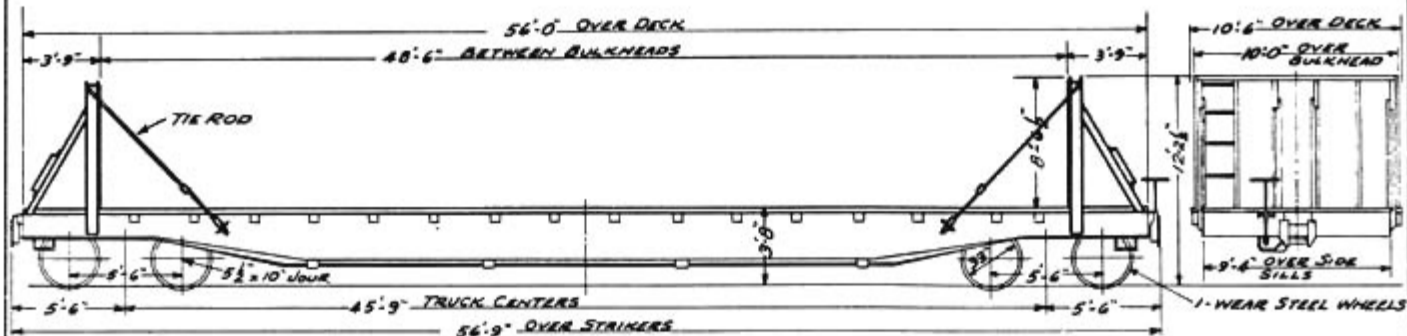
CAR NOS. 2931-2950

CAR NO. 2990

NO. OF CARS 21

CONVERTED FROM THE FOLLOWING:  
 2931-2950 FROM 2051-2075 AFE 127-58  
 2990 " " " AFE 102-59

NOTE: - ORIG. SERIES 2051-2075 BUILT APRIL 1957.



ASF A-3 RIDE CONTROL TRUCKS  
 N.M. & S.C. CO. MF-400 RUBBER DRAFT GEARS  
 TIMKEN AP ROLLER BEARINGS

CAPACITY. --- 100000 LBS.	WEIGHT - BODY 43210
	TRUCKS 14590
	TOTAL: 57800 LBS.

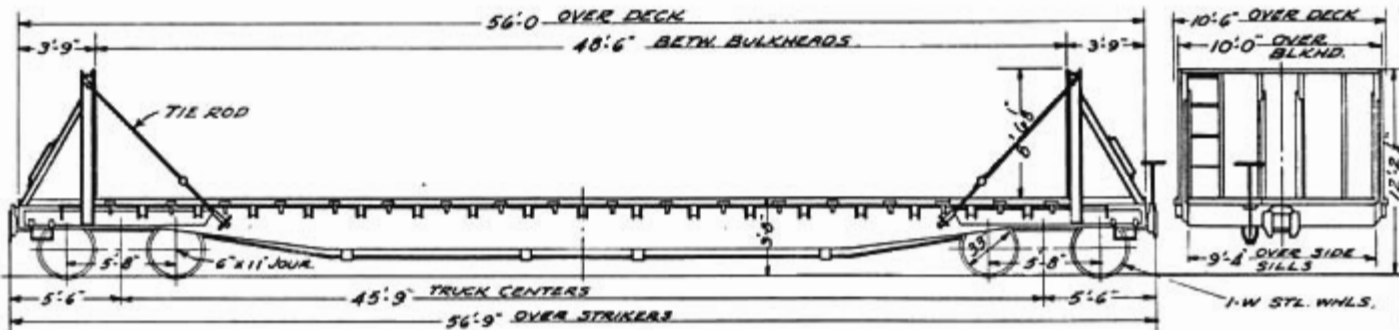


BULKHEAD FLAT CAR, CLASS FMS  
 CONVERTED FROM 2101-2150 SERIES FLAT CARS  
 BY W.P.R.R. AFE 60-61, 67-62, 128-66

CAR NOS 2926-2930  
 CAR NOS 2991-3000  
 CAR NOS 2841-2850  
 CAR NOS 2817-2819

NO OF CARS 28

REV. 1-31-64  
 1-18-68



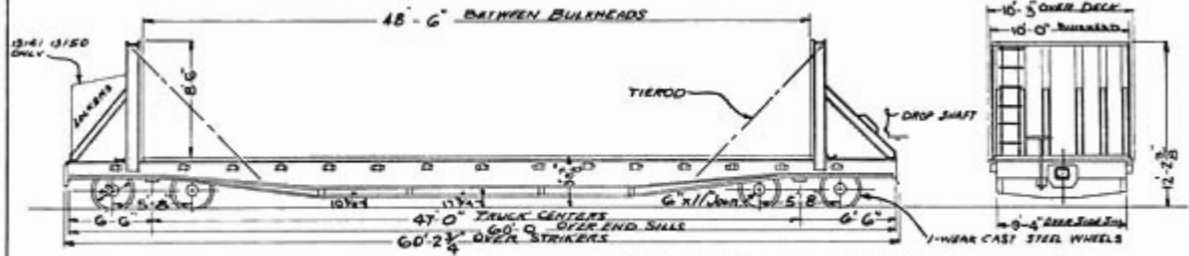
BARBER S-2-C STABILIZED TRUCKS  
 CARDWELL-WEST. TYPE NY-11-F DRAFT GEARS  
 TIMKEN OR SKF ROLLER BEARINGS

CAPACITY	140,000 LBS	WEIGHT-BODY	48,460
		TRUCKS	16,440
		TOTAL	64,900

RWC 11-20-61

FLAT CARS CLASS FMS  
 BUILT BY GUNDERSON ENGINEERING CORP 1964  
 AFE 135-G4

CAR NOS: 13101-13150  
 NO OF CARS- 50



NATIONAL CASTING TYPE C-1 TRUCKS  
 FREIGHTMASTER CUSHION DRAFT GEAR  
 HYATT ROLLER BEARINGS

CAPACITY 140,000 LBS

WEIGHT-BODY	50 1 00
TRUCKS	17 5 00
<b>TOTAL</b>	<b>67 6 00</b>

UIC 8-50-64